

WASEDA University
早稲田大学

Overseas Offices

▶ Taiwan

International Center Taipei

10F, Shin Kong Life Nanjing Science and Technology BLDG. No.167, Sec. 2,
Nanjing E. Rd., Zhongshan Dist., Taipei City 104475
Tel: +886-2-2507-4501

▶ U.S.A.

WASEDA USA, San Francisco Office

64 Shattuck Square, Suite 220 Berkeley, CA 94704
Tel: +1-510-833-2150

International Admissions Office Waseda University

Address : 1-6-1, Nishi-waseda, Shinjuku-ku, Tokyo, 169-8050

Tel : +81-3-3204-9073

Inquiry Form : <https://forms.office.com/r/vU64PnJKTZ>



This brochure is published as a guide for students who wish to study at the University in 2024.
Information contained in the brochure is accurate at the time of printing (May 2023) and is subject to revision and changes. Please refer to the University website for updates.

<https://www.waseda.jp/inst/admission/en/>



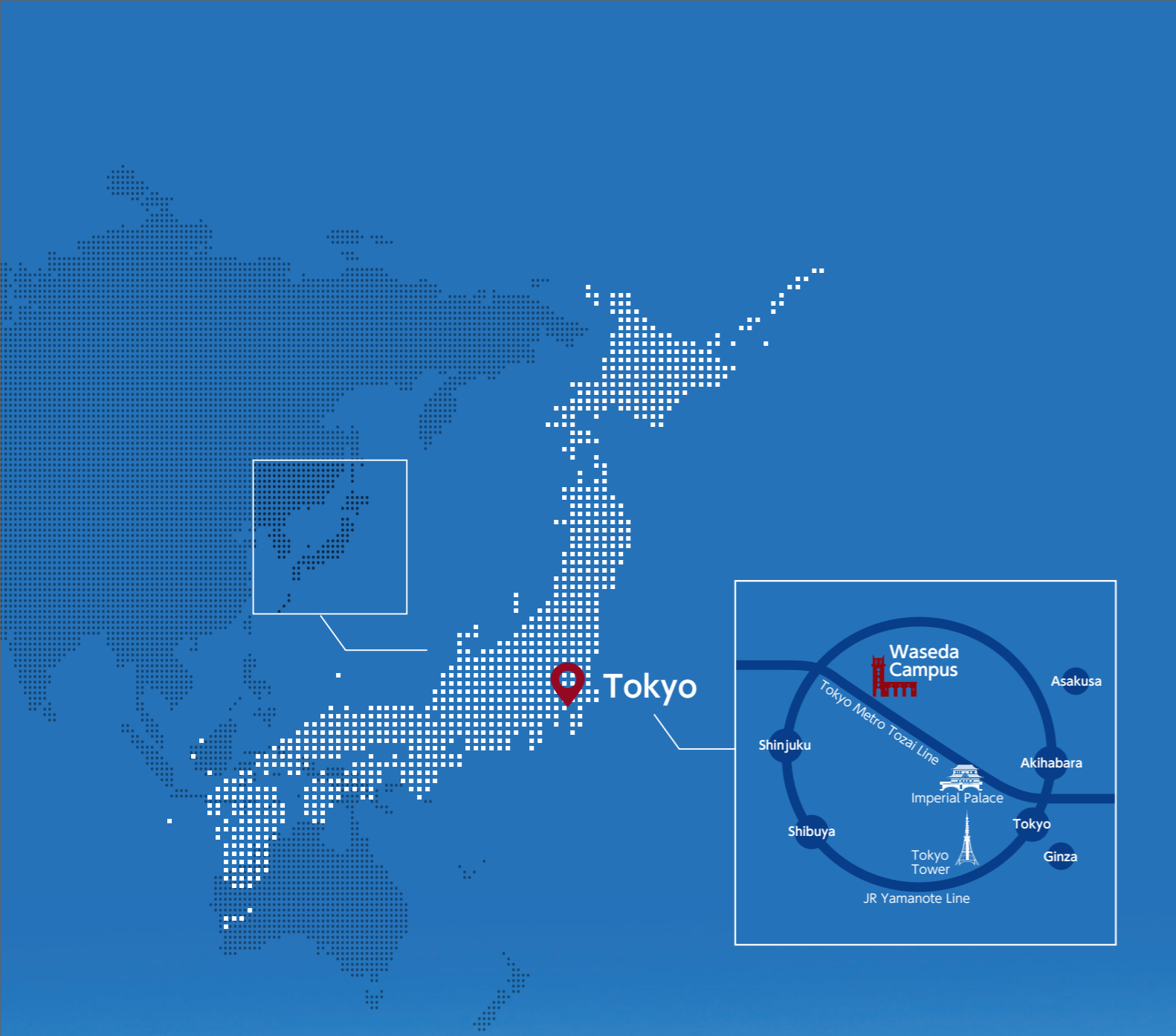
ENGLISH-BASED

WASEDA University



Undergraduate
Programs

2024



QS World University Rankings 2023

#2 Private University
in Japan
(#10 in Japan, #205 in the world)

QS World University Rankings by Subject 2023

Top 100

- Classics & Ancient History
- Geography
- Politics
- Sports-related Subjects
- Modern Languages
- Law and Legal Studies
- Arts & Humanities
- Social Sciences & Management
- Linguistics

QS Graduate Employability Rankings 2022

#1 Private University
in Japan
(#2 in Japan, #37 in the world)

Alumni Prime
Ministers of Japan

8

Alumni CEOs & Presidents
in Japan

10,407

Asahi Shimbun Publishing College
Ranking 2023

Number of International Students

8,350

From **121**

Countries and Regions

Where Students
Come From

CHINA	4,425
KOREA	961
TAIWAN	593
U.S.A.	559
INDONESIA	123
FRANCE	121
U.K.	117
THAILAND	116
SINGAPORE	107
HONG KONG	101
GERMANY	85
CANADA	81
OTHERS	961
TOTAL	8,350

As of Academic Year 2019



Overview



Virtual Campus Tour <https://waseda-vrtour.com/>

School of Political Science and Economics

» See p.4

▶ Majors

- Political Science Bachelor of Arts in **Political Science**
- Economics Bachelor of Arts in **Economics**
- Global Political Economy Bachelor of Arts in **Global Political Economy**

▶ Degrees Offered

School of Culture, Media and Society

» See p.10

▶ Program

- Global Studies in Japanese Cultures Program (JCULP) Bachelor of Arts in **Literature**

▶ Degree Offered

School of Social Sciences

» See p.6

▶ Program

- Transnational and Interdisciplinary Studies in Social Innovation Program (TAISI) Bachelor of Arts in **Social Sciences**

▶ Degree Offered

School of Fundamental Science and Engineering

» See p.14

▶ Majors

- Mathematical Sciences Bachelor of Science
Bachelor of Engineering
- Computer Science and Communications Engineering Bachelor of Engineering

▶ Degrees Offered

School of International Liberal Studies

» See p.8

▶ Program

- International Liberal Studies Bachelor of Arts in **International Liberal Studies**

▶ Degree Offered

School of Creative Science and Engineering

» See p.15

▶ Majors

- Mechanical Engineering Bachelor of Engineering
- Civil and Environmental Engineering Bachelor of Engineering

▶ Degrees Offered



School of Political Science and Economics

For details, please visit the website https://bit.ly/waseda_spse



- Degrees**
- Bachelor of Arts in Political Science
 - Bachelor of Arts in Economics
 - Bachelor of Arts in Global Political Economy

Introduction

Developing Universal Skills through Specialization

The School of Political Science and Economics (SPSE) was one of the original academic units established when Waseda University was founded in 1882. The synthesis of the study of political science and economics was innovative at that time and lies at the cutting edge of contemporary academia, both in Japan and globally. The School remains true to its founding goal of advancing scientific understanding of political and economic phenomena.

The SPSE offers specialized degree programs in political science and economics that are fully comparable in quality to majors in these disciplines at top universities around the world. While keeping a low student-to-faculty ratio, we offer a wide variety of courses that balance our School's traditions with a modern approach to both political science and economics. Our curriculum provides a systematic progression from introductory to advanced courses, and numerous opportunities to participate in seminars. The seminars offer an exceptionally high degree of specialization, bringing academic research and undergraduate education together. SPSE students can also take classes outside their chosen field of specialization and gain exposure to a rich canvass of knowledge and skills, including quantitative and qualitative methods training, theoretical and applied reasoning techniques, and abstract and historically grounded models of the world.

Our goal is to equip students with the skills needed to succeed in a changing world through academic excellence and intellectual freedom.

Features



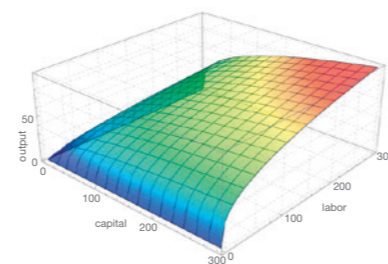
Specialized Degrees

Learn in depth and systematically through specialized coursework in political science and economics



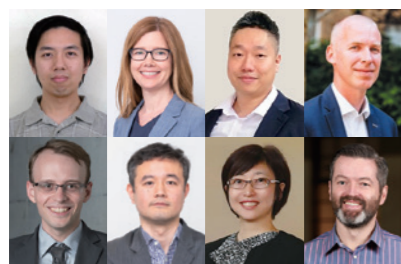
Fully Bilingual Program

Most courses are offered in English and Japanese



Develop Core Methodological Skills

Mathematics, statistics, game theory, experimental methods, network analysis, text analysis, and programming



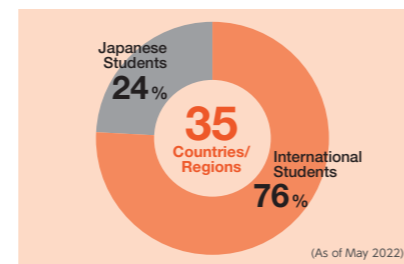
International Faculty with Genuine International Experience

International and distinguished faculty with extensive experience at leading universities worldwide



Working Closely with Professors

Small, discussion-based courses ("seminars") with professors, from the first year to the final year



Global Learning Environment

Our students come from many countries and regions around the world



We have YouTube videos you can access through this QR code or URL.

<https://bit.ly/spse-pv>

Curriculum

Each of our three majors is defined through respective credit requirements that comprise courses in political science and economics.



	Introduction	Foundation	Specialization
Political Science	Political Analysis	Contemporary/Japanese Politics	Political Communication, Political Institutions, Political Behavior, Comparative Political Economy, etc.
	International Relations	Comparative Politics	Comparative Democratization, Politics of Western Europe, Politics of East Asia, etc.
	Public Philosophy	International Politics	International Organization, International Political Economy, International History, etc.
	Political Thought and Political History	Public Policy	Public Policy, Public Administration, Local Government, NPOs and NGOs, etc.
Economics	Microeconomics	Economic Policy	Labor Economics, Health Economics, Environmental Economics, Political Economics, Law and Economics, etc.
	Macroeconomics	International Economics	Development Economics, Asian Economy, Spatial Economics, etc.
	Game Theory	Intermediate Micro/Macroeconomics	Japanese Economy, Advanced Micro/Macroeconomics, Welfare Economics, Public Economics, etc.
	Statistics	Finance	Money and Banking, International Trade, International Finance, Public Finance, etc.
	Methodology	Economic History	Japanese Economic History, Global Economic History, Economic Thought, Institutional Analysis, etc.
Seminars	Basic Seminar	Mathematical Analysis	Advanced Game Theory, Behavioral Economics, Experimental Economics, Mathematical Economics, etc.
	Intermediate Seminar	Econometrics	Quantitative Analysis, Network Analysis, Applied Econometrics, Advanced Econometrics, etc.
		Advanced Seminar, Thesis	Advanced Seminar, Thesis
Academic Writing, Japanese and Other Languages, General Studies, etc.			

*Courses are subject to change.

Study Abroad Programs Exclusively for SPSE Students

In addition to the University's study-abroad programs, SPSE runs programs exclusively for SPSE students.

Double-Degree Programs

National Taiwan University	Taiwan
The Hong Kong University of Science and Technology	Hong Kong

Exchange Programs

City University of Hong Kong	Hong Kong
Victoria University of Wellington	New Zealand
Vrije Universiteit Amsterdam	Netherlands
University of Milan	Italy
UiT The Arctic University of Norway	Norway
IESEG School of Management	France
...and more	

3+1 Consecutive Degree Program with the University of Essex, England

Under the innovative "3+1" program, accomplished students at SPSE complete their B.A. at Waseda in **three years** and proceed to a prestigious **one-year Master's program** at either Department of Government or Department of Economics.

Scholarships

In addition to the scholarships offered by Waseda University, several scholarships (e.g., the Howard Hagiya Scholarship) are available exclusively for SPSE prospective students with outstanding entrance exam scores. Various other scholarships, such as those provided by the Bai Xian Asia Institute, are available to current SPSE students with excellent academic records.



School of Social Sciences



Degree · Bachelor of Arts in Social Sciences

TAISI Transnational and Interdisciplinary Studies in Social Innovation Program

Introduction

Become a Social Innovator

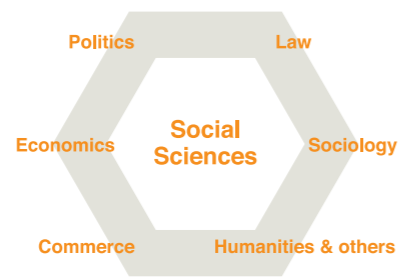
The aim of the TAI SI Program is to create “Social innovators” and train students to become leaders for social change. Students in the TAI SI Program will not only gain general knowledge in the social sciences, but also practical and specialized knowledge. This is provided through fieldwork and theoretical courses in the following four fields: Community & Social Development, Peace Building & International Cooperation, Economic & Environmental Sustainability, and Social Organizations & Working. As the world continues to globalize and advance, it has become increasingly important that as citizens of the world, students need to not only approach global issues from an international perspective, but also discover and implement more effective, sustainable, and fair solutions to these issues.

Features



Hands-on Experience

Students will engage in either on-site research or classroom simulation to find feasible and sustainable solutions to social issues.



Multidisciplinary Research

Students study the social sciences via a broad base of multidisciplinary and foundational knowledge with a focus on four fields.



Japanese Perspective

Students study these fields from the Japanese perspective and investigate whether Japanese methods can be applied or adopted.



The TAI SI program promotional video is now on YouTube!
Please use the following QR code or URL.



<https://bit.ly/tais-npv>

Curriculum

	1st Year	2nd Year	3rd Year	4th Year
Foundations in Social Sciences	<p>Example of Courses</p> <ul style="list-style-type: none"> • Game Theory • Contemporary Japanese Society • Empirical Study on Policy Evaluation 			
Interdisciplinary Studies in Social Innovation	<p>Introduction Field Issues Practicum</p>			
Community & Social Development	<p>Image courtesy of blue studio</p> <p>Example of Courses</p> <ul style="list-style-type: none"> • Introduction to Rural Development • Theory of Community Development • Urban History of Tokyo 			
Peace Building & International Cooperation	<p>Example of Courses</p> <ul style="list-style-type: none"> • Globalization and Human Rights • Education and Development • Japan and World War II: Historical Controversies 			
Economic & Environmental Sustainability	<p>Example of Courses</p> <ul style="list-style-type: none"> • Introduction to Public Economics • International Development Policy • International Finance 			
Social Organizations & Working	<p>Example of Courses</p> <ul style="list-style-type: none"> • International Human Resource Management • Theories of Social Business Cooperation • Trans-Pacific Perspectives on Work, Culture, and Society 			
Statistics Literacy	[Progress bar]			
Seminar	<p>Freshman Seminar Sophomore Seminar Junior Seminar Senior Seminar</p>			
Japanese Language Study	[Progress bar]			
				Capstone Project

*Courses are subject to change



School of International Liberal Studies



Degree · Bachelor of Arts in International Liberal Studies

Introduction

Crossing Borders, Sharing Cultures, Inventing the Future

The School of International Liberal Studies (SILS) offers a unique environment where students from more than 50 countries and regions around the world come together to study a wide range of subjects and exchange views with each other. The small-sized classes feature professors whose backgrounds are as varied as those of the students.

Students at SILS pursue a liberal arts curriculum which emphasizes the fostering of knowledge of various different areas, gaining multidimensional perspectives, developing logical thinking, and acquiring language skills over four years. In addition, the school offers a wide variety of innovative programs and support for not only the student's studies, but also in choosing and embarking on their future careers, whether in Japan or abroad.

By becoming a member of this international community, students will gain the skills required to thrive in today's multicultural world through working and interacting with one another.

Features

<p>1 Life, Environment, Matter and Information</p> <p>Artificial Intelligence, Biology, Calculus, Data Science, Environmental Science, Mathematics, Physics, Programming, etc.</p>	<p>2 Philosophy, Religion and History</p> <p>History (Media, Physical Science, Region, Society, etc.), Historical Survey, Philosophy, Religious Studies, etc.</p>	<p>3 Economy and Business</p> <p>Accounting, Advertising, Business, Game Theory, Marketing, Macroeconomics, Microeconomics, etc.</p>	<p>4 Governance, Peace, Human Rights and International Relations</p> <p>Foreign Policy, Human Security, International Relations, Peace Studies, Politics, Political Economy, Public Policy, etc.</p>
<p>5 Communication</p> <p>Applied Linguistics, Historical Linguistics, Phonetics, Phonology, Pragmatics, Semantics, Sociolinguistics, Syntax, etc.</p>	<p>6 Expression</p> <p>Art Studies, Creative Writing, Film Studies, Literature, Media Studies, Photography, Theatre Studies, etc.</p>	<p>7 Culture, Mind and Body, and Community</p> <p>Anthropology, Comparative Culture, Cultural Studies, Gender Studies, Sociology, Urban Studies, Psychology, etc.</p>	

*Courses are subject to change

A Liberal Arts Curriculum with Seven Clusters

SILS builds on the roots of a liberal arts education, and over the course of four years, the school curriculum will equip students with a pluralistic and international perspective, the ability to think logically, and excellent language skills, while they cultivate knowledge in a wide range of subjects.

Where Students Come From



Diversity in Coexistence

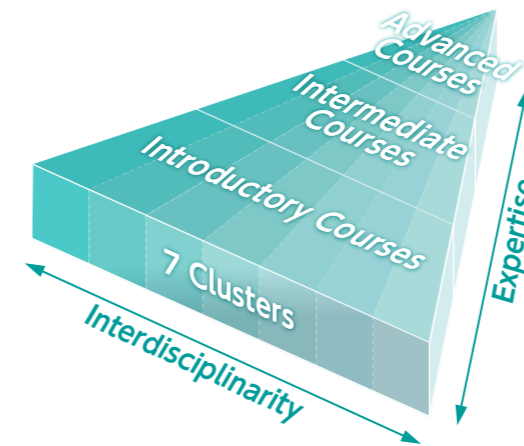
Approximately 30% of our students and faculty are non-Japanese nationals, and they come from more than 50 countries and regions around the world.



Small-class Education

Seminars are based on a ratio of one teacher for every 20 students. Through active discussions, dialogues, Q&As, and presentations, the students develop their linguistic competence and communication skills, enabling them to learn, think, and convey their views effectively.

Curriculum



SILS has created seven different study clusters in order to allow students to become well-rounded and flexible individuals. Each cluster is divided into three levels: Introductory, Intermediate and Advanced. Instead of immediately throwing themselves into one particular discipline, students are encouraged to take the classes that interest them and gradually work toward more specialized knowledge.

Concentration Program

At SILS, students can study a wide range of academic fields. This program has been established to enable them to study specific ones in a structured way. Students who have earned the required number of credits in courses designated by each concentration (field of study) are eligible to receive a certificate of completion for the concentration upon graduation. More than 50 students complete concentrations each semester.

Fields of Concentration Programs

- American Studies
- Economics
- European Studies
- Global Governance
- History
- International Relations
- Linguistics
- Literature
- Mathematical Sciences
- Media Studies
- Political Economy of International Development

APM Program

The APM program (Area Studies and Plurilingual/Multicultural Education Program) focuses on French, Spanish, Chinese and Korean. In addition to studying the languages as courses, this program adopts the Content and Language Integrated Learning (CLIL) method, which brings together the learning content and language of instruction. Through this, students learn about topics pertaining to those countries such as culture, history, economy, and politics from multiple perspectives. A one-year study abroad program is also linked with the APM program, allowing students to choose to study abroad in the target country to deepen their knowledge. APM not only fosters students' plurilingual and multicultural skills, but also helps them become global citizens and leaders who are open to different cultures and backgrounds.



5BM Program

The SILS-Sciences Po 5BM program is a competitive dual degree program (taught in English) designed for students interested in obtaining a Bachelor's degree from SILS and a Master's degree from Sciences Po within 5 years (or 5.5 years for April-entry students). Ranked 2nd internationally for Politics & International Studies (QS Ranking 2021), Sciences Po is one of the world's leading universities for Social Studies. Students can become multilingual with intensive French language courses during their studies there. Students shortlisted by SILS and accepted by Sciences Po will be able to spend 2 years at Sciences Po after 3 years (or 3.5 years) of study in SILS. Every year, up to 5 students from SILS will be shortlisted.





School of Culture, Media and Society

For details, please visit the website
https://bit.ly/waseda_jculp



Degree • Bachelor of Arts in Literature

JCuLP Global Studies in Japanese Cultures Program

Introduction

Why Study in JCuLP?

JCuLP takes students through a humanistic exploration of the literary, artistic, and philosophical movements that shape Japan today. Students will not only study Japan's long and rich cultural tradition, but also explore its current vibrant and creative subcultures, such as manga, anime, and J-pop. Our diverse curriculum will expand your horizons and allow you to reexamine your own culture within a global context, giving you a different perspective and a deeper understanding of the world.

Features



A diverse group of students from Japan and abroad



An interdisciplinary curriculum that you can tailor to your interests



Japanese proficiency not required upon admission

Learn More About JCuLP

Articles

To read more in-depth articles about JCuLP, search for "JCuLP news" online.

<https://bit.ly/jculp-ed>



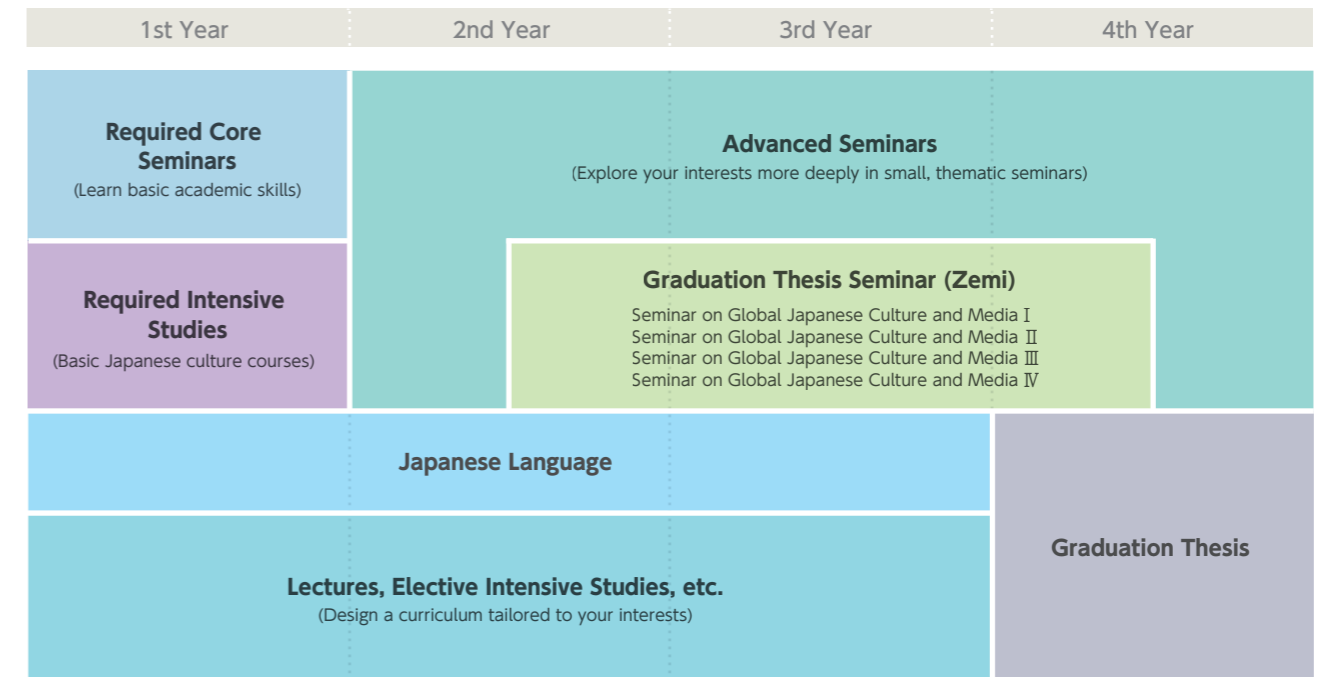
Promotional Videos

To watch interviews with actual JCuLP students and faculty, search for "JCuLP promotional video" online.

<https://bit.ly/jculp-pv>



Overview of the Coursework



Wide Range of Elective Courses

JAPANESE LITERATURE

- Contemporary Japanese Fiction in English Translation
- Reading and Translating Japanese Literature
- Japanese Literature in the World: From Genji to Haiku
- Storytelling and Media

VISUAL CULTURE AND MEDIA

- Global Tokyo
- Anime: The Face of Japanese Popular Culture
- Japan's Living Theater
- Japanese Cinema and Literature

JAPANESE CULTURE AND SOCIETY

- Radical Thought, Protest and Dissent in Modern Japan
- Sociolinguistic Dynamics in Japanese Languages and Dialects
- Tracing the Borders of Japan in the Early 20th Century
- Ghosts and the Supernatural in Japanese Culture

WORLD LITERATURE & CREATIVE WRITING

- Imagination and Morality in East Asian Culture
- Introduction to Creative Writing
- Women's Coming-of-Age Narratives
- Creative Writing Beyond the Mother Tongue



Faculty of Science and Engineering

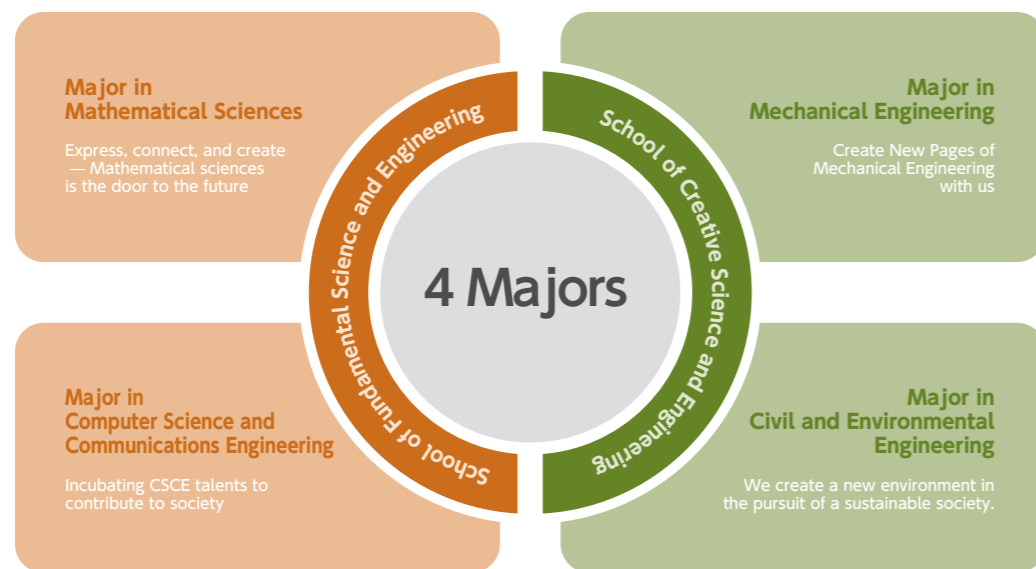
- ◆ School of Fundamental Science and Engineering
- ◆ School of Creative Science and Engineering



Introduction

In 2010, the Faculty of Science and Engineering at Waseda University became one of the first institutions in Japan to introduce an English-based Program, offering students the opportunity to acquire an undergraduate degree based solely on learning in English. This program has been highly acclaimed both in Japan and overseas.

From April 2018, the undergraduate "English-based Program" was reorganized with education and research programs strengthened through the addition of new disciplines and by boosting faculty numbers. Based around this world-class program, we aim to create new value through the mutual stimulation of a diverse student body and by building the best possible environment for an education in science and engineering.



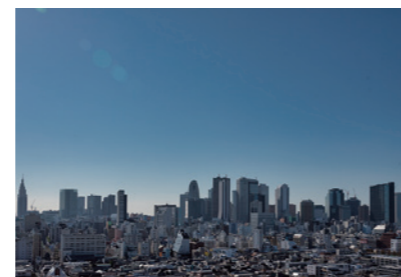
Features



Broad coverage of 4 major fields of science and engineering



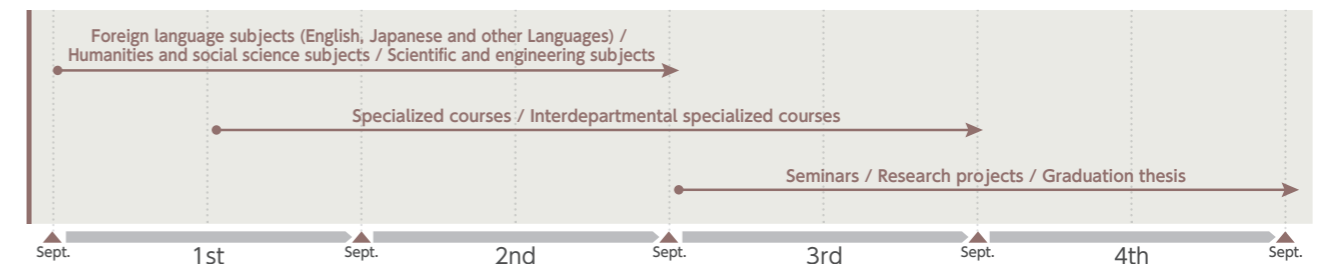
Covers the most diverse range of fields of any international program in Japan.



In the heart of a city well known as one of the safest and easiest places to live in the world, the Faculty of Science and Engineering is on the Nishi-Waseda campus.

Curriculum

※ The following information of curriculum is for September 2023 enrollment.



There are four Major courses covering a broad range of science and engineering fields over two undergraduate schools. Students in the undergraduate English-based Program obtain degrees in each Major upon conducting studies across the entire curriculum in English. (*The type of degree you can obtain depends on the chosen course.)

In the first and second years, students mainly take courses aimed at acquiring the foundational knowledge required in all fields of science and engineering, while preparing to take the specialized courses under each Major that begin from the second year. During graduation research, students are assigned to a research laboratory or seminar and work on compiling their graduation thesis under the direct guidance of their supervising professors.

All September enrollees in this program must take Japanese Language or other Languages.

* Students in Major in Mechanical Engineering must take Japanese language.

Departmental Affiliation and Degree

When students enroll in the English-based Undergraduate Program in Science and Engineering, Waseda University, each student is automatically affiliated with the School responsible for administering the students' chosen major program. At the end of their third year, each student's departmental affiliation is determined by the School taking into account the student's academic performance and preference. The table below shows the departments which students may be affiliated with according to their chosen major (e.g. students who choose to Major in Mathematical Sciences will be affiliated with either the Department of Mathematics or the Department of Applied Mathematics at the beginning of their fourth year).

As shown in the table below, the type of degree (i.e. a Bachelor of Science degree or a Bachelor of Engineering degree) a student will be conferred upon graduation will depend on the student's departmental affiliation.

Major	Degree	Department	School
Mathematical Sciences	• Bachelor of Science	• Mathematics	Fundamental Science and Engineering
	• Bachelor of Engineering	• Applied Mathematics	
Computer Science and Communications Engineering	• Bachelor of Engineering	• Computer Science and Engineering • Communications and Computer Engineering	Fundamental Science and Engineering
Mechanical Engineering	• Bachelor of Engineering	• Modern Mechanical Engineering	
Civil and Environmental Engineering	• Bachelor of Engineering	• Civil and Environmental Engineering • Resources and Environmental Engineering	Creative Science and Engineering



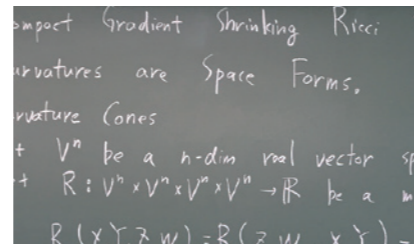
School of Fundamental Science and Engineering

Major in Mathematical Sciences

Express, connect, and create
– Mathematical sciences is the door to the future

The Major in Mathematical Sciences will provide a broad curriculum, ranging from fundamental to applied mathematics. The aim is to equip students with knowledge not only of mathematical sciences but also of its connections to scientific and engineering fields, and to provide students with the mathematical skills needed to make a contribution to society. The course places particular focus on three topics that are essential in modern society: nonlinear mathematics, computational mathematics, and statistical mathematics.

Degree • Bachelor of Science
 • Bachelor of Engineering



Faculty & Keywords

Name	Research Area
BOWEN, Mark	Nonlinear Differential Equations
FUKUIZUMI, Reika	Nonlinear Partial Differential Equations
GUEST, Martin	Geometry
HAYAMIZU, Momoko	Discrete Mathematics
HOMMA, Yasushi	Differential Geometry
IKEDA, Takeshi	Geometry, Representation Theory and Combinatorics
ITO, Kimihisa	Mathematical Materials Engineering
KAJI, Hajime	Algebraic Geometry
KASHIWAGI, Masahide	Numerical Analysis
KOZONO, Hideo	Functional Analysis, Nonlinear Partial Differential Equations
KUBOTA, Ayako	Algebraic Geometry
KUMAGAI, Takashi	Probability Theory
KUTO, Kousuke	Nonlinear Partial Differential Equations
LIU, Yan	Time Series Analysis
MARUNO, Kenichi	Mathematical Physics
MATSUSHIMA, Toshiyasu	Information Theory and its Applications
MIEZAKI, Tsuyoshi	Algebraic Combinatorics

Name	Research Area
MURAKAMI, Jun	Topology
NAGAI, Yasunari	Algebraic Geometry
NARITA, Hiroaki	Number theory and Automorphic forms
OGITA, Takeshi	Numerical Analysis
OISHI, Shinichi	Verification of Accuracy of Numerical Computations and Applications
OHMOTO, Toru	Singularity Theory, Characteristic Classes, Applied Geometry
OHNITA, Yoshihiro	Differential Geometry, Harmonic Map Theory
OZAKI, Manabu	Algebraic Number Theory
SHIMIZU, Yasutaka	Mathematical Statistics and Applied Probability
TAKAHASHI, Daisuke	Nonlinear Dynamical Systems
TANAKA, Kazuaki	Reliable Computing with Neural Networks
TANAKA, Kazunaga	Nonlinear Analysis
TOYOIZUMI, Hiroshi	Applied Probability
TRINH, Khanh Duy	Probability Theory and Applied Probability
USUBA, Toshimichi	Mathematical Logic, Set Theory
YAMAZAKI, Masao	Partial Differential Equations
YONEDA, Gen	Theory of Relativity

Major in Computer Science and Communications Engineering

Incubating CSCE talents to contribute to society

Students in the Computer Science and Communications Engineering Major acquire cutting-edge knowledge and skills required for an advanced networked and computerized society, encompassing computer science, computer engineering and communications engineering. The major aims to maximize the individual potential of each student and thereby foster future engineers who will be able to contribute to these fields in a global context and in a variety of professions. Career paths are diverse thanks to the recent computerization, and include software, electric machinery, telecommunications, broadcasting, and ICT services.

Degrees • Bachelor of Engineering



Faculty & Keywords

Name	Research Area
FUKAZAWA, Yoshiaki	Software Engineering, Web-application Development, Agent-Based Software
HONIDEN, Shinichi	Self-adaptive Systems, Automated Software Evolution, Automated Program Repair
ISHIKAWA, Hiroshi	Computer Vision, Discrete Optimization, Pattern Analysis
KAMEYAMA, Wataru	Multimedia Content Distribution, Information Sharing and Retrieving
KASAHARA, Hironori	Supercomputing, Multicore, Parallelizing & Power Reducing Compiler
KASAI, Hiroyuki	Optimization, Machine Learning, Signal Processing
KATTO, Jiro	Future Networking and Multimedia Signal Processing
KAWAHARA, Daisuke	Natural Language Processing, Artificial Intelligence, Text Analysis/Understanding
KIMURA, Keiji	Computer Architecture, Parallelized Applications, Parallelizing Compiler
KOBAYASHI, Tetsunori	Perceptual Computing, Spoken Language Processing, Image Processing, Intelligent Robot
LIU, Jiang	Wireless Sensing, Wireless Network Systems, Optical Wireless Communication
MAEHARA, Fumiaki	Wireless Communications and Communications-related Signal Processing
MORI, Tatsuya	Information Security and Privacy
MORITA, Itsuro	Optical Fiber Communication, Free Space Optics
NAKAJIMA, Tatsuo	Infrastructures, Social Platforms, and Interaction Design in Distributed Computing Environments
NAKAZATO, Hidenori	Network Engineering, Distributed Computing
OGAWA, Tetsuji	Pattern Recognition, IoT, Audio and Speech Processing
PAN, Zhenni	Green Communications, Mobile Communication Systems, Wireless Networks
SAKAI, Tetsuya	Information Access, Natural Language Processing, Interaction

Name	Research Area
SAKO, Kazue	Cryptographic Protocols, Blockchains, Security and Privacy by Design
SHIMAMOTO, Shigeru	Wireless Access, Air and Space Communication, Body Area Network
SHIMIZU, Kana	Computational Biology
SIMO-SERRA, Edgar	Machine Learning, Computer Graphics, Image Processing, Human Computer Interface
SUGAWARA, Toshiharu	Multi-Agent Systems, Distributed Artificial Intelligence, Machine Learning in Multi-Agent Systems Contexts
TANAKA-ISHII, Kumiko	Computational Linguistics, Machine Learning, Complex Systems Theory, Natural Language Processing, Computational Finance using Natural Language Processing
TEI, Kenji	Self-adaptive Software, Reactive Systems, Event-triggered Control, Internet-of-Things
TERAUCHI, Tachio	Programming Languages, Program Verification, Program Synthesis, Type Systems, Automated Deduction
TOGAWA, Nozomu	Integrated Circuit System Design
UCHIDA, Masato	Data Science, Machine Learning, Information Security
UEDA, Kazunori	Design and Implementation of Programming Languages, High-performance Computer-Aided Verification
WASHIZAKI, Hironori	Software Engineering, Reliable Software Systems, Software Development Environments
WATANABE, Hiroshi	Video and Image Recognition, Video Coding
YAMANA, Hayato	Big Data (Secure Computation, Data Mining, IR), Pen-based Computing
YANAGISAWA, Masao	Bioinformatics



School of Creative Science and Engineering

Major in Mechanical Engineering

Create New Pages of Mechanical Engineering with us

"Modern mechanical engineering" covers traditional areas such as manufacturing as well as recent areas such as robotics and medical engineering. In response to recent various social demands, modern mechanical engineering is expected to integrate architecture and management system engineering into mechanical engineering. Students can graduate only by taking courses, including laboratory courses and graduation research, given in English, but students are recommended to take also courses given in Japanese to learn relationship between academia and industry in Japan.

Degree • Bachelor of Engineering



Faculty & Keywords

Name	Research Area
ARIGA, Takashi	Urban and Environmental Design
GOTO, Masayuki	Research on Applied Information Science
HASUIKE, Takashi	Research on Mathematical Decision Making
HISHIYAMA, Reiko	Research on Intelligent Information System
ISHII, Hiroyuki	Biorobotics
ISHIMURA, Kosei	Design of Structures and Mechanisms
IWASAKI, Kiyotaka	Biomechanical and Biomedical Engineering
IWATA, Hiroyasu	Human Assistive and Augmentation Robotics/ Medical Robotics
KANEKO, Shigehiko	Research on Systems Mechanics
KISHI, Tomoji	Research on Software Engineering
KOMATSUBARA, Akinori	Research on Human Life Engineering
KUSAKA, Jin	Thermal Energy Conversion, Automotive Propulsion System
LIN, Jia-Yeu	Robotics, Intelligent mechanics
MATSUBARA, Masami	Research on Functional Structure Design
MATSUDA, Yu	Thermo-Fluid Engineering, Visualization techniques for thermo-fluid phenomena
MIYASHITA, Tomoyuki	Design Methodology of Mechanical System

Name	Research Area
MUNECHIKA, Masahiko	Research on Quality Management
NAKAGAKI, Takao	Research on Exergy Engineering
OHMORI, Shunichi	Research on Logistics Engineering
OHYA, Jun	Image Engineering
SUGANO, Shigeki	Intelligent Machine
TAKAGUCHI, Hiroto	Environment Media
TAKAHASHI, Shingo	Research on Systems Science and Engineering
TAKANISHI, Atsuo	Robotics and Mechatronics
TAKIZAWA, Kenji	Fluid-Structure Interaction
TANABE, Shin-ichi	Architectural Environment
UEMACHI, Akane	Energy system mechanics
UMEZU, Shinjiro	Micro/ Nano Engineering
WESUGI, Shigeru	Co-creative Interface Design
YOSHIDA, Atsumasa	Environmental Thermal Engineering
YOSHIDA, Makoto	Transporters & Energy Plants Materials Science and Engineering

Major in Civil and Environmental Engineering

We create a new environment in the pursuit of a sustainable society.

Covering the fundamentals of civil engineering, students learn how to create a better and more sustainable human society through the construction of infrastructure. The course includes environmental approaches to development, ensuring safety and security against natural hazards, and the improvement of urban environments. Career paths include engineers and planners for civil service, construction, transport, and energy industries. The Department of Civil and Environmental Engineering manages the major's educational program, in collaboration with the Department of Resources and Environmental Engineering and the Department of Architecture.

Degree • Bachelor of Engineering



Faculty & Keywords

Name	Research Area
AKAGI, Hirokazu	Soil Mechanics & Geotechnical Engineering
AKIYAMA, Mitsuyoshi	Concrete Engineering
ESTEBAN, Miguel	Sustainability Science, Natural Disaster, Climate Change, Renewable Energy
FURUI, Kenji	Geomechanics and Petroleum Production Engineering
HAYAMI, Hiroshi	Atmospheric & Environmental Sciences
ITSUBO, Norihiro	Environmental Life Cycle Assessment
IWANAMI, Motoi	Structural Engineering & Structural Design
KAWABE, Yoshishige	Geo-environmental Engineering
KITANO, Naohiro	City and Regional Planning, International Development
KOIIWA, Masaki	History of Architecture
KOMINE, Hideo	Geotechnical Engineering
KURIHARA, Masanori	Petroleum Engineering
MIKAMI, Takahito	Coastal Engineering & Management, Natural Disasters
MORIMOTO, Akinori	Transportation Planning

Name	Research Area
OKOCHI, Hiroshi	Atmospheric and Aquatic Environmental Chemistry
ONO, Kiyoshi	Structural Mechanics
OWADA, Shuji	Resources Recycling Engineering
SAKAKIBARA, Yutaka	Water Quality & Environmental Engineering
SASAKI, Kuniaki	Urban science
SASAKI, Yoh	Urban and Regional Design
SATO, Yasuhiko	Structural Engineering & Structural Design
SEKINE, Masato	River Engineering
SHIBAYAMA, Tomoya	Coastal Engineering and Management
TAKAGUCHI, Hiroto	Environment Media
TOKORO, Chiharu	Resources and Environmental Processing Engineering
UEDA, Takumi	Exploration Geophysics
WANG, Hailong	Geotechnical and Geoenvironmental Engineering
YAMAGUCHI, Katsunori	Materials Processing Engineering

From Students



KIM, Young Hoo 
 Korea
 School of Political Science and Economics
 Major in Political Science
 Graduated from Seoul Foreign School


What a Global Culture Does

Aside from the obvious merits derived from immersing oneself in an unfamiliar culture, the university's practice of international learning is what drew me to Waseda, specifically the SPSE. As someone who studies politics in an effort to expand their worldview, what makes the SPSE perfect for me is that the international setting at Waseda never fails to challenge my perspectives, a blessing for any serious thinker. Professors from all walks of life urge exploration beyond textbooks. The diversity of the student body compels open-mindedness. And the global excellence that surrounds you demands a work ethic. Waseda's mode of learning equips you with tools that transcend the classroom by forcing you to do the very thing that constitutes not just a scholar, but a human being: thinking. It is how this university channels its cultural diversity that satiates the very desire that led me to political science.

An opportunity to gain hands-on experience

I chose Waseda for so many reasons, but mostly because of the TAIISI program, which is unique compared to other social innovation curriculums. I do believe myself to be a practical learner, and the study approach of the TAIISI program is such that I can choose to do either a thesis or a capstone project. What I love about this is that it offers me the opportunity to gain hands-on experience of creating a potential solution for the social issue I'm most passionate about. It makes me more excited and motivated to have my social project come to life. I also relish being in the School of Social Sciences' beautiful learning spaces because they have such great views that you can enjoy while studying. It is an absolute delight!



EMOH, Justina Ebubechukwu 
 Nigeria
 School of Social Sciences
 Transnational and Interdisciplinary Studies in Social Innovation Program (TAIISI)
 Graduated from Bethel Secondary School

Discovering interests I never knew I had

The main reason why I chose SILS is because I did not know what I wanted to be in the future. SILS offers such a diverse and liberating program in one of the most prosperous cities in the world; it was an opportunity I did not want to miss and definitely do not regret. If I told my freshman high school self about who I am today, she would have never believed me. SILS allowed me to discover interests I never knew I had in the first place, while learning a new language, which although difficult, I know will benefit me in what I hope will be my future career. Thanks to SILS, I now know I want to serve as a Foreign Officer for my country, the Philippines in the future.



PO, Bea Sabrina Espejo 
 The Philippines
 School of International Liberal Studies
 Graduated from The Beacon Academy



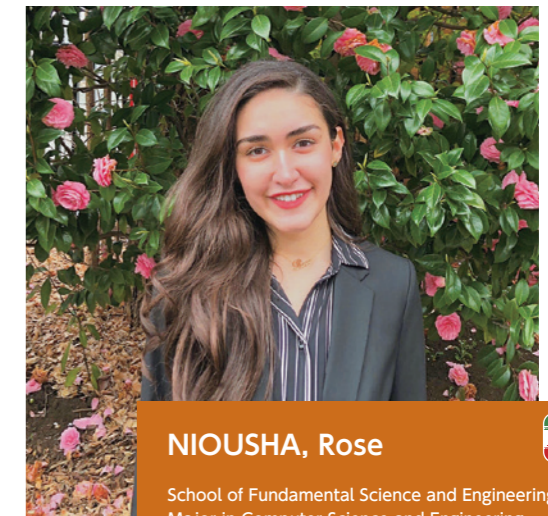
BEZANILLA Y BOURGES, Malena 
 France
 School of Culture, Media and Society
 Global Studies in Japanese Cultures Program (JCulP)
 Graduated from Lycée Pierre Lagourgue


Unique and Inimitable Global Experience

I always loved traveling and learning more about other countries and cultures. Japan was one of the countries that attracted me the most, by its intriguing mix of tradition and modernity. Waseda gave me the opportunity to come study in Tokyo at a prestigious university, and get an insight into the real Japanese culture and lifestyle. Studying in JCulP is providing me with a unique and inimitable global experience. At Waseda, people from all different backgrounds and cultures are welcomed warmly by both the student body and faculty alike. I believe JCulP is giving me the possibility to study both media and culture, and to take part in constructive discussions in an international environment. After my studies, I wish to work in the media industry to share the knowledge I developed during my university time with people who, like me, enjoy discovering the world.


Waseda, a school for global leaders

While there are many English based programs, it is extremely rare to be able to study an engineering major in English as an undergraduate in here Japan. What I love about this program is how close the connection between the students and the professors is so that there is always a place for face-to-face questions. Moreover, I am very blessed to have met such amazing friends with various backgrounds from all over the world. Although the workload is quite tough, because everyone is constantly motivated and has their own purposes to study their majors, we always have study sessions after the classes which allow us to deepen our understanding even more and get through the challenges together. I for sure believe that Waseda gives everyone the chance to become the bridge between Japan and the world in the future.



NIOUSHA, Rose 
 Iran
 School of Fundamental Science and Engineering
 Major in Computer Science and Engineering
 Graduated from Tokyo Metropolitan Kokusai High School



LIN, Leo 
 USA
 School of Creative Science and Engineering
 Major in Mechanical Engineering
 Graduated from Taipei European School

Waseda, the place fostering the creators of future

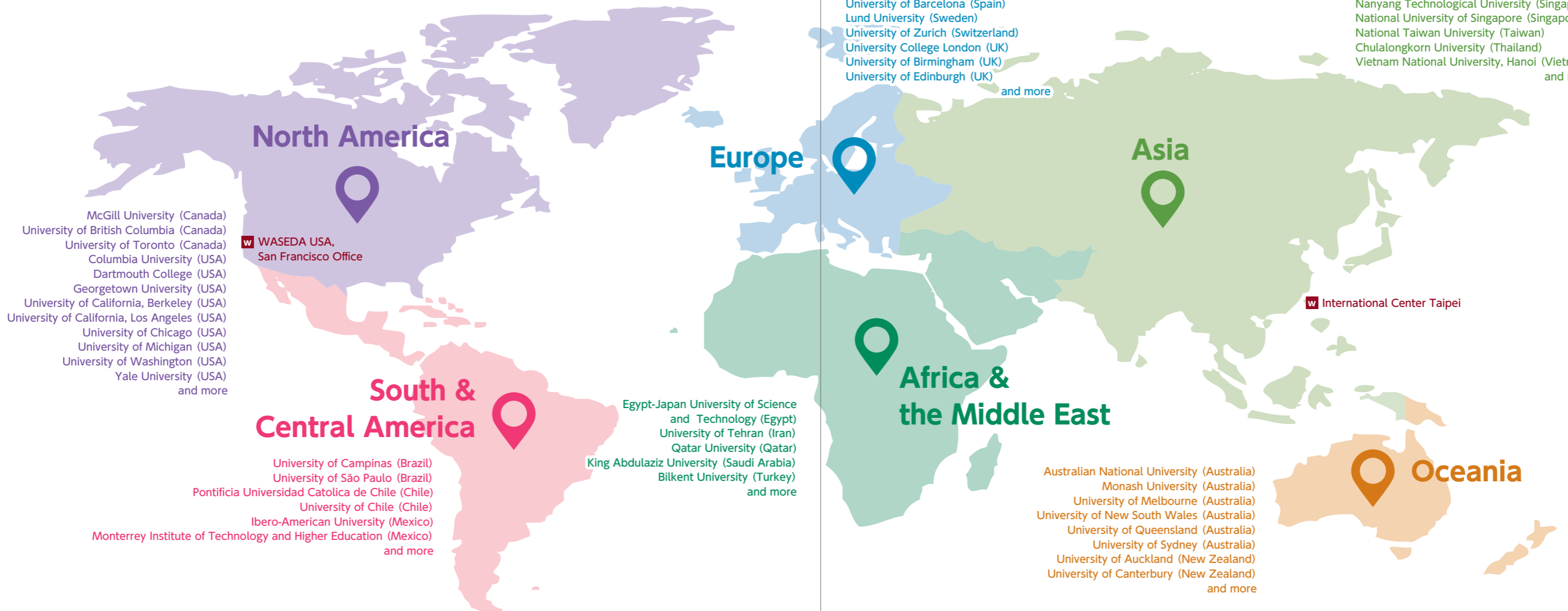
Waseda University has been the pioneer in providing high quality English programs in Japan. The warm and welcoming environment allows us to collaborate and learn deeply with students from all backgrounds. Besides, the Japanese language classes and electives provided in Japanese act as a bridge connecting us to the industries and the local society. Studying mechanical engineering here gives students access to laboratories of a wide-range of subfields. I believe that this is the place where we could challenge our own and stimulate innovations.

WASEDA's Worldwide Network

For a full list of partner institutions, please search for "Partner, WASEDA" online.

Partnership agreements at both university and departmental levels with **848** universities and institutions in **91** countries and regions

As of December 2021



Study Abroad Programs

▶ Double Degree Programs

Students earn designated degrees from both Waseda and their host university when they graduate with certain requirements satisfied. They need high-level foreign language skills as well as academic skills to complete the curriculum.

▶ Exchange Programs

Students study abroad based on exchange agreements with partner universities. They are required to have relatively high-level language skills and can take regular academic courses with local students.

▶ Customized Study Programs

These programs are designed especially for Waseda students. There are two types of programs: one where students can take regular academic courses, and one where they focus on brushing up a foreign language from beginner level.

▶ Short-term Programs

Students have a chance to develop their language skills and to learn the culture of their chosen country during spring or summer vacation. This can be a good opportunity to prepare for participating in a longer study abroad program in the future.

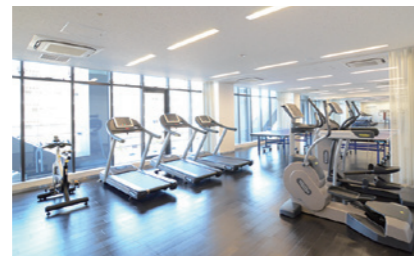
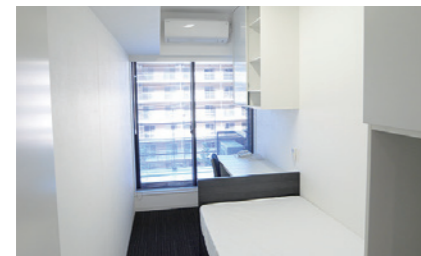
Student Dormitories

The Residence Life Center provides 20 more dormitories and helps to establish a network extending beyond the affiliated schools, departments and nations. Here are the 2 largest dormitories.

Furthermore, if you would prefer to rent your own apartment, the Student Housing Center - which is operated by Waseda University Property Management Corp - can assist you.

▶ Waseda International Student House (WISH)

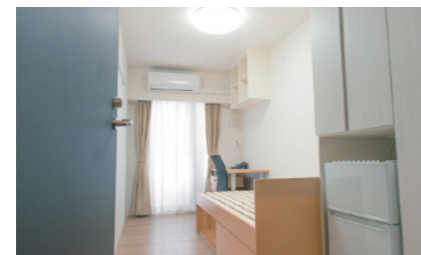
Access	3 stops by Metro (approx. 9 min) from Waseda Station
Capacity	872
Fees	JPY 55,000 per month (includes utility fees)
Possible Length of Stay	2 years for April admissions and 1.5 years for September admissions (freshmen only)
Meals	Not provided (shared kitchen available)
Room Type	Single
Note	September admissions may be able to extend their length of stay by 0.5 years.



▶ Affiliated Dormitories

The student dormitories are operated by companies that have a cooperative relationship with Waseda University. You can choose the one that best suits your needs in terms of location, dormitory fees, facility type, and meal options. For details on each dormitory and how to apply, please refer to the Waseda University Residence Life Center website.

<https://www.waseda.jp/inst/rlc/en/>



*These photos are of the affiliated dormitory WID WASEDA.

Expenses

Tuition

First Year Expenses

School	Expenses (JPY)	Expenses (USD)
Political Science and Economics	1,206,500	9,281
Social Sciences	1,176,800	9,052
International Liberal Studies	1,593,000	12,254
Culture, Media and Society	1,213,000	9,331
Fundamental Science and Engineering	1,721,000	13,238
Creative Science and Engineering	1,751,000 - 1,753,000	13,469 - 13,485

The above amounts are for September 2023 enrollment, including the admission fee (JPY 200,000), regular tuition fee and various administrative fees. The exchange rate used is 130 yen per dollar.

Living Expenses

Estimated Living Expenses (1 month)

	Expenses (JPY)	Expenses (USD)
Accommodation	80,000	615
Food and utilities	34,000	262
Other personal expenses	16,000	123
Total	130,000	1,000

Personal expenses will depend on the student's individual lifestyle. The estimates above are for reference only. The exchange rate used is 130 yen per dollar.



Scholarships

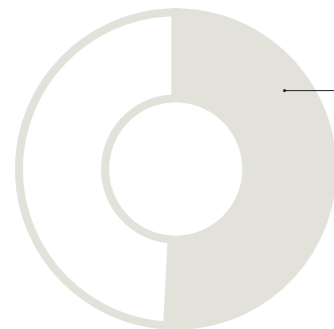
*Numbers below are as of March 2022.

Scholarships provided by Waseda



Max
1,000,000 yen
a year per student

Scholarships provided by external organizations that are available at Waseda



51%
of international undergraduate students receive a scholarship

Examples of Waseda Scholarships

Scholarship name	Amount	When you register
Yamada Taikichi and Asa Scholarship	JPY 1,000,000/year	After enrollment
Reserved Scholarship for Successful International Examinees	JPY 500,000/2 years	Before enrollment
Waseda University Partial Tuition-Waiver Scholarship for Privately Financed International Students	50% of annual tuition waived	Before enrollment / After enrollment
Okuma Memorial Scholarship	JPY 400,000/year	Before enrollment / After enrollment
Azusa Ono Memorial Scholarship for International Students	JPY 400,000/year	After enrollment

Meet One of Our Scholarship Recipients

Opening New Doors

I received the Global Leader International Student Scholarship (for incoming students) offered by Waseda University to privately financed international students who are deemed to have outstanding academic potential based on a holistic evaluation comprising application documents, academic records, and/or an interview.

One of the attractive points of this program is that there are no bonds involved. Upon applying to the program at the university, students are considered for this scholarship without the need for a separate application. Most eligible students are notified during the announcement of the screening results. Scholarships can be an important factor for students who need financial support when choosing a university.

My scholarship and studies in Japan have broadened my perspectives, providing me with the opportunity to learn a new language, gain a better understanding and deeper knowledge of the Japanese economy and society, and build a network of friends in the country, among many other benefits. I believe all of the aforementioned have opened new doors for opportunities in my career and beyond. My unique experiences have shaped me into a better and more well-informed individual—and that is the greatest implicit gift.



WANG, Yuelin

School of Political Science and Economics
Major in Economics
Graduated from Hwa Chong Institution



Singapore

▶ Part-Time Job Opportunities

If you wish to do a part-time job to cover some of your expenses during your studies, Waseda University will help you find ones on or off campus.

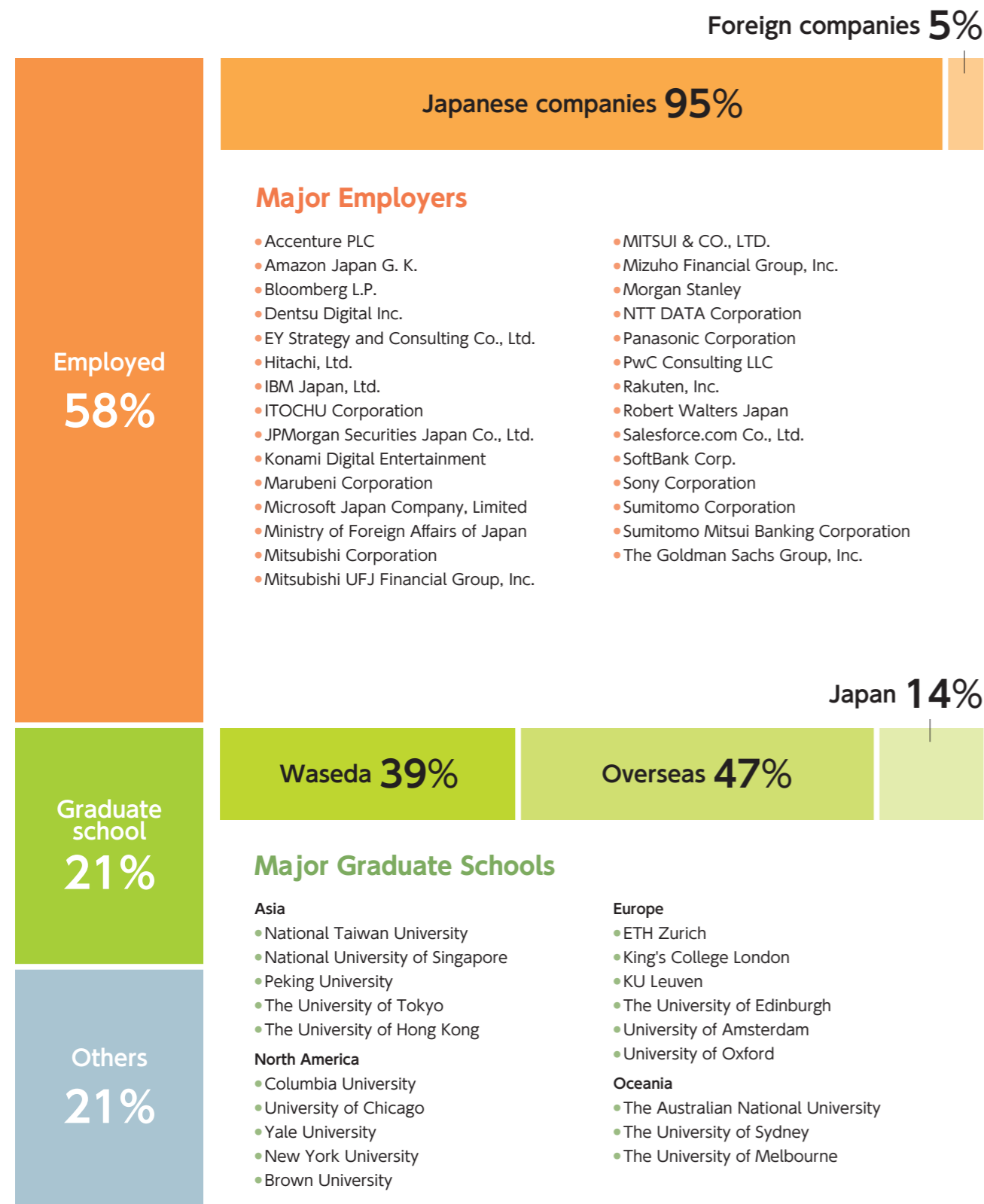
*International students are allowed to do part-time jobs for up to 28 hours a week during the semester and 40 hours a week during summer/winter/spring breaks, by applying for a Part-Time Work Permit.



Career Path

As of April 2022

2021-2022 Academic Year: Post-Graduation Paths of 759 Students in English-based Undergraduate Programs



Choosing to enter graduate school to make use of undergraduate studies

I was always fond of Japan and knew I wanted to study there after graduating from my high school in Shanghai. I was not able to speak Japanese at all back in the time, so Waseda, with its well-developed English-based degree programs, became an obvious choice for me.

I always enjoyed dealing with math, so choosing applied mathematics as my major is a more-than-natural decision for me. Waseda's programs offer a sheer amount of subjects in English, which students are allowed to study freely — outside their areas of expertise, too. Despite most of the classes I took were centered around mathematics and computer science, I also took classes like literature and arts out of pure interest. Being able to join a lab in the undergraduate years and conduct a specialized research is a big perk of being in Waseda. I personally joined a probability and statistics-oriented lab in my third year of university and continued the study throughout my graduate life. Our lab offers seminars in both Japanese and English. This thereby grants chances to international students to communicate with Japanese students and allows them to extend their Japanese skills outside of everyday conversation. I want to work for an IT company in Japan in the future and put what I have learned about statistical analysis to use.

Waseda offers many opportunities to grow both on and off campus. To make the most out of them, I encourage everyone to go bold and worry less about the failures.



CHEN, Chung-an



Graduated from the Department of Applied Mathematics in the School of Fundamental Science and Engineering in 2020
Working on a master's degree in Pure and Applied Mathematics at the Graduate School of Fundamental Science and Engineering



CHODEN, Sonam



Graduated from the School of International Liberal Studies in 2019
Earned a master's degree from the Graduate School of Asia-Pacific Studies in 2021
Works at HENNGE K.K.

You can seek out your future goals at Waseda

I was born in Bhutan and lived in Qatar until I graduated from high school. I liked manga and anime from when I was a child, which led me to want to study in Japan. So, I came here in 2014 and was attending Japanese language school when I heard about Waseda's English-based degree programs, and I enrolled the following year.

The School of International Liberal Studies enables students to take courses in a wide range of academic fields. I mainly took journalism courses in my first year and international relations ones in my second year. In my third year, I became interested in Children's rights during a Seminar on Governance and then entered graduate school to research further on Women's and Children's rights. Looking back, when I first came to Waseda, my interests were too varied and I had no goals for my future. The School of International Liberal Studies' curriculum was perfect for me at that time; it let me delve into my interests and test out a diverse range of fields. I love that Waseda is brimming with internationality, too: there is a strong culture of encouraging people to understand others, regardless of nationality.

At my job, I work in human resources. I get to interview internship candidates from around the world online, which lets me put my experience interacting with friends with diverse backgrounds at Waseda to use. I hope that everyone will do their best to widen their circle of friends and learn Japanese while at Waseda. You can open up a whole new world that way, and it will give you more choices in the future.