

UNIVERSITY *of* GUELPH



ONTARIO, CANADA



A photograph of a university campus scene. In the foreground, a large, grey stone sculpture of a dragon with wings and horns sits on a concrete base. To the right, a group of five students are standing and talking on a paved walkway. One student is wearing a blue turban and a white jacket with a plaid scarf. Another is wearing a bright yellow hoodie. The background is filled with lush green trees and a black street lamp with a white globe. The overall atmosphere is bright and sunny.

IMPROVE LIFE

At the University of Guelph, everyone who studies here, explores here, teaches here and works here is committed to one simple purpose: to Improve Life.

● Your adventure starts here.

Let's Improve Life together.

TOP 5

COMPREHENSIVE UNIVERSITY IN CANADA
(MACLEAN'S 2023)

30,000

STUDENTS FROM 135+ COUNTRIES

92.03%

EMPLOYMENT RATE WITHIN 6 MONTHS OF GRADUATION

TOP 10

PLACES TO LIVE IN CANADA (BEST CITIES, 2022)

TOP 500

UNIVERSITY IN THE WORLD (QS, 2024)

#1

IN TOTAL RESEARCH DOLLARS
(MACLEAN'S COMPREHENSIVE RANKINGS, 2023)

16

UNDERGRADUATE DEGREE PROGRAMS

75+

MAJORS AND 60+ MINORS

\$27 MILLION

IN SCHOLARSHIPS AND BURSARIES DISTRIBUTED LAST YEAR



EXPERIENCE CANADA

Immerse yourself in a vibrant multicultural experience, with diverse communities, world-class education, and breathtaking landscapes which are ready to explore. Canada offers a welcoming and inclusive environment for you to thrive in, both academically and socially.



7 LOCATIONS

ON CAMPUS TO ORDER POUTINE, CANADA'S NATIONAL DISH!



2 ICE RINKS

ON CAMPUS WITH FREE SKATING FOR STUDENTS



61 STUDENT CLUBS

FOCUSED ON DIVERSITY AND INCLUSION



400 ACRES

OF TRAILS AND FORESTS CONNECTED TO CAMPUS



96%

OF INTERNATIONAL STUDENTS
RECOMMEND CANADA AS A STUDY
DESTINATION

(Canadian Bureau for International Education)



Climate

Four distinct seasons:

- 🍃 **Spring:** mid-March to May
10° to 20° C (some rain)
- ☀️ **Summer:** June to August
20° to 30° C (humid)
- 🍂 **Fall:** September to November
7° to 20° C
- ❄️ **Winter:** December to mid-March
-15° to 2° C (snow, sunny)

Arriving in Canada

Travel time by air to Toronto*:

- New York 1 hr
- Miami 3 hrs
- Kingston 4 hrs
- Mexico City 4.5 hrs
- Vancouver 5 hrs
- Bogota 6 hrs
- London 7 hrs
- Amsterdam 7.5 hrs
- Frankfurt 7.5 hrs
- Paris 8 hrs
- Istanbul 10 hrs
- Cairo 11.5 hrs
- Dubai 13 hrs
- Beijing 13.5 hrs
- Hong Kong 14.5 hrs
- Delhi 16 hrs
- Tehran 16.5 hrs
- Dhaka 20.5 hrs
- Port Louis 21 hrs

*Guelph is only a one-hour drive from Toronto's Pearson International Airport. Shuttle service can be arranged to bring you directly to campus.

redcarservice.com



City of Guelph

visitguelphwellington.ca

**— GUELPH IS ONE
OF CANADA'S
TOP 10 PLACES
TO LIVE**



SMALL TOWN CHARM, BIG CITY OPPORTUNITY

With a rich history and small-ish size (population 153,000), Guelph offers the perfect blend of major city vibes and tightly knit community. We're only an hour's drive from Toronto and the Greater Toronto Area (GTA), with GO commuter trains offering easy access.

Make no mistake: Guelph is no suburb. It's a vibrant and diverse city that embraces U of G students.

1 HOUR

FROM TORONTO

DIVERSE

MUSIC, ART AND CULTURE FESTIVALS YEAR-ROUND

GREAT FOOD

DELICIOUS RESTAURANTS WITH LOCAL AND INTERNATIONAL FLAVOURS

SAFE

RANKED AS ONE OF CANADA'S TOP 3 SAFEST CITIES



Our Campus

uoguel.ph/interactivemap

YOUR HOME AWAY FROM HOME

Everything you need is steps away. It takes just 10 minutes to walk across campus!



12 RESIDENCES

WITH 4,800 BEDS

18 LECTURE HALLS

WITH UP TO 600 SEATS

262,133 SQ. FT.

LIBRARY WITH QUIET AND GROUP STUDY FLOORS

33 ACADEMIC

INSTITUTES AND CENTRES

7 SPORT FIELDS

INCLUDING AN 8,500-SEAT STADIUM

7 DINING HALLS

ACROSS CAMPUS

12 CAFÉS

TO SOCIALIZE AND STUDY

WE ACKNOWLEDGE

The University of Guelph campuses reside within the lands of the Dish with One Spoon Wampum. We recognize that the Anishinaabe, Hodinohso:ni, Lūnaapéewak and Huron-Wendat peoples have inhabited these lands for centuries and we respect their enduring relationships with these lands. We are committed to working towards decolonization and reconciliation with Indigenous peoples and enhancing the engagement of and supports for First Nations, Inuit, and Métis students.

Learn about our Indigenous initiatives: indigenous.uoguelph.ca

LEARN BEYOND THE CLASSROOM

The Experiential Learning Hub will connect you with co-op programs, further education planning, on and off-campus jobs, volunteer and co-curricular opportunities, job fairs and networking events.

Experiential Learning

uoguelph.ca/ELhub

Graduate with a degree and a resumé loaded with the kind of experience employers want to see!

Experiential Learning is learning by doing. At the University of Guelph, we offer a variety of programs and resources to create a unique Professional & Career Development Record, which includes:

- Career practice courses
- Volunteer programs and events
- On and off-campus employment
- Student clubs and leadership opportunities
- Field courses
- Research opportunities
- And more!

Our team is made up of professionals who are ready to help you navigate your options so you can find the best fit for your goals.

Career Development

experienceguelph.ca

The Experiential Learning Hub supports all students and alumni as they plan for their career or further education.

We will help you with everything you need to build a career, which includes:

- Developing a personal career and/or education plan.
- Teaching you how to market yourself and your degree.
- Providing Peer Helpers to help you create a memorable resumé.
- Helping you search for summer, part-time and post-graduation job opportunities.

We have over 8,000 industry and community partners posting experiential learning opportunities for students and alumni each year.

Co-operative Education

uoguelph.ca/coop

Don't wait until graduation! Enrol in a co-op program to explore career paths and build your network.

Why Apply to U of G Co-op?


- You will complete an introductory course that will prepare you for your work terms.
- Your Co-op Coordinator will help you along the way.
- You will complete 3-5 work terms prior to graduation.
- All co-op positions are full-time and PAID!

Where will I work?

- There are job opportunities across Ontario and in some cases, across Canada or internationally.
- Co-op work terms vary between 4 months, 8 months and 12 months.



Scan this QR code to learn more about each co-op program, its academic/work sequence, and the types of jobs students have held in the past.



"I knew studying here would provide me with the highest quality education and best opportunities for growth. Through my program, I've gained experience that helped me land a job with a Fortune 500 Tech Company, Oracle NetSuite."

Simone Ianniello

Hometown: Pisticci, Italy

Bachelor of Commerce, food and agricultural business, co-op

Campus Involvement: Events Manager Lang Sustainability Conference (2nd year),

Corporate Manager Lang Students' Association (3rd year), Director of Corporate

Relations Lang Students' Association (4th year), Teaching Assistant, JDCC Delegate,

Co-Chair of the Corporate Committee, Oracle NetSuite Campus Ambassador

4,200+

active employers in more than 30 countries.

\$40 MILLION+

total combined earnings for all co-op students in 2022/2023.

\$500-\$1,000CAD

average earnings per week for past co-op students.



YOU WANT IT? WE'VE GOT IT.

As one of Canada's leading comprehensive universities, we have programs to match every interest and passion.

AGRICULTURE

Seek new perspectives on food through scientific, business and environmental lenses.

THERE ARE 4 JOBS FOR EVERY AGRICULTURAL GRADUATE IN CANADA!

ARTS

Reimagine possibilities for real-world problems in outreach, policy, research and art.

92.9% OF OUR BA GRADS ARE EMPLOYED WITHIN 6 MONTHS OF GRADUATION.

BIOLOGICAL SCIENCE

Study in the largest integrated science teaching and research facility in North America.

WE ARE #1 IN CANADA FOR TOTAL RESEARCH DOLLARS! (MACLEAN'S COMPREHENSIVE RANKINGS, 2023)

BUSINESS

Use business as a force for good to tackle the world's biggest challenges.

LANG BUSINESS IS AACSB ACCREDITED AND RANKED #2 IN CANADA FOR ITS FOCUS ON SUSTAINABILITY (CORPORATE KNIGHTS, 2020).

ENGINEERING AND PHYSICAL SCIENCES

Gain a competitive edge through uniquely specialized majors.

OUR GRADS WORK AT APPLE, GOOGLE, AMAZON AND MICROSOFT.

SOCIAL AND APPLIED HUMAN SCIENCES

Build theoretical and applied skills for a future career in human health, development and beyond.

STUDENTS COMPLETE 100+ HOURS OF PRACTICUMS AND PLACEMENTS IN APPLIED SCIENCE.

VETERINARY

Contribute to the world of medicine, care, scientific discovery and community.

U OF G IS #1 IN CANADA AND TOP 10 IN THE WORLD FOR VETERINARY MEDICINE (QS, 2023).



— IT'S YOUR
CHOICE

Build your best degree. Add a minor, explore electives, top it off with a certificate. Tailor it as you go - it's your choice that matters.

Minors

Choose a minor because it intrigues you, because it complements your major, or because it's something you've always wanted to learn.

- Accounting
- Agriculture
- Anthropology
- Applied Geomatics
- Biochemistry
- Biology
- Biotechnology
- Black Canadian Studies
- Business
- Business Data Analytics
- Business Economics
- Chemistry
- Classical Studies
- Computing and Information Science
- Creative Writing
- Culture and Technology Studies
- Ecology
- Economics
- English
- Entrepreneurship
- Environmental Engineering
- Family and Child Studies
- Food Engineering
- French Studies
- Geography
- History
- Human Resources
- International Business
- International Development Studies
- Linguistics
- Marketing
- Mathematical Science
- Mathematics
- Media and Cinema Studies
- Microbiology
- Molecular Biology and Genetics
- Museum Studies
- Music
- Neuroscience
- Nutritional and Nutraceutical Sciences
- One Health
- Philosophy
- Physics
- Political Science
- Project Management
- Psychology
- Sexualities, Genders and Social Change
- Sociology
- Sport and Event Management
- Statistics
- Studio Art
- Sustainable Business
- Theatre Studies
- Zoology

Certificates

opened.uoguelph.ca

Add a certificate to your studies and improve your potential employment opportunities.

- Accounting
- Business
- Environmental Citizenship
- Environmental Conservation
- Food Science
- Hospitality Studies
- Indigenous Environmental Governance
- Leadership
- Public Policy and Administration

**Minors and certificates can be selected after you begin your university studies.*

ACADEMIC TERMS AND DEFINITIONS

An **undergraduate degree** is the first degree you can complete at the university level. It is commonly called a baccalaureate or bachelor's degree, and may be further classified as honours or general.

An **honours degree** is typically completed in four years of full-time study and often focuses on a particular discipline, e.g., Honours Bachelor of Science (in Biochemistry); Honours Bachelor of Arts (in Classical Studies).

A **general degree** is typically completed in three years of full-time study and often involves a more generalized or broadly defined study area. To view a list of programs that are offered in general versus honours format, please visit the Undergraduate Calendar at admission.uoguelph.ca/degrees.

A **professional degree** meets the accreditation standards of a particular professional association or college. At U of G, we offer professional degrees in Veterinary Medicine (DVM), Engineering (B.Eng.), Applied Human Nutrition (B.A.Sc.) and Landscape Architecture (BLA). Several professional degrees, like the DVM, require the completion of some university study before application.

An **associate diploma** is a two-year program offered on our main campus and at our Ridgetown campus. It involves focused, hands-on training in a specific field, e.g., Associate Diploma in Environmental Technician; Associate Diploma in Turfgrass Management.

A **graduate degree** can be completed after an undergraduate degree. It involves additional study in a particular area of interest and may include research or the completion of a thesis.

A **major** is the main area of study within an honours degree. It involves intensive focus on a specific discipline, e.g. Environmental Engineering; Bio-Medical Science, Marketing Management.

A **minor** is an optional secondary area of study that can be related to or different from your major and provides an introductory level of education about a single discipline. A minor is selected after you begin your university studies (see list).

A **credit** is the unit of measurement for university courses. Usually, a course that lasts one semester is equivalent to one half-credit (0.5). Full-year courses are usually one full credit (1.0).

A **semester** is an academic study period of 12 weeks. U of G offers three semesters of study: fall (September to December), winter (January to April) and summer (May to August).



Programs and Requirements

admission.uoguelph.ca/international/programreqs

Program	Majors	Requirements
Bachelor of Applied Science uoguel.ph/basc 8 semesters (Honours Degree)	<ul style="list-style-type: none"> Applied Human Nutrition 	<ul style="list-style-type: none"> English Math Biology Chemistry 2 additional courses
	<ul style="list-style-type: none"> Child Studies Family Studies and Human Development 	<ul style="list-style-type: none"> English Math 1 course from: Biology or Chemistry 3 additional courses
Bachelor of Arts uoguel.ph/ba 6 semesters (General Degree) 8 semesters (Honours Degree)	<ul style="list-style-type: none"> Anthropology Classical Studies Creative Writing Criminal Justice and Public Policy Culture and Technology Studies English Environmental Governance Food, Agricultural and Resource Economics French Studies Geography History 	<ul style="list-style-type: none"> English 5 additional courses
	<ul style="list-style-type: none"> International Development Studies Justice and Legal Studies Music Philosophy Political Science Psychology Sexualities, Genders and Social Change Sociology Studio Art Theatre Studies 	
Bachelor of Arts and Sciences uoguel.ph/bas 8 semesters (Honours Degree)		<ul style="list-style-type: none"> English Advanced Math† 2 courses from: Biology, Chemistry, Physics 1 Arts or Social Studies 1 additional course
	<ul style="list-style-type: none"> Economics Mathematical Economics 	<ul style="list-style-type: none"> English Advanced Math† 4 additional courses
Bachelor of Arts and Sciences uoguel.ph/bas 8 semesters (Honours Degree)		<ul style="list-style-type: none"> English Advanced Math† 2 courses from: Biology, Chemistry, Physics 1 Arts or Social Studies 1 additional course
	<ul style="list-style-type: none"> Environmental Management 	<ul style="list-style-type: none"> English Biology 4 additional courses
Bachelor of Bio-Resource Management uoguel.ph/bbrm 8 semesters (Honours Degree)	<ul style="list-style-type: none"> Equine Management 	<ul style="list-style-type: none"> English Math Biology Chemistry 2 additional courses
		<ul style="list-style-type: none"> English Math Biology Chemistry 2 additional courses
Bachelor of Commerce (Business) uoguel.ph/bcomm 8 semesters (Honours Degree)	<ul style="list-style-type: none"> Accounting Food and Agricultural Business Government, Economics and Management Hospitality and Tourism Management Management 	<ul style="list-style-type: none"> English Advanced Math† 4 additional courses
	<ul style="list-style-type: none"> Management Economics and Finance Marketing Management Real Estate Sport and Event Management Undeclared (first-year only) 	
Bachelor of Computing uoguel.ph/bcomp 6 semesters (General Degree) 8 semesters (Honours Degree)	<ul style="list-style-type: none"> Computer Science Software Engineering 	<ul style="list-style-type: none"> English Calculus 4 additional courses
		<ul style="list-style-type: none"> English 5 additional courses
Bachelor of Creative Arts, Health and Wellness* uoguel.ph/bcahw 8 semesters (Honours Degree) <small>*Pending approval by the Ontario Universities Council on Quality Assurance</small>	<ul style="list-style-type: none"> Music Studio Art Theatre Studies 	<ul style="list-style-type: none"> English 5 additional courses

Program	Majors	Requirements
Bachelor of Engineering uoguel.ph/beng 8 semesters (Honours Degree)	<ul style="list-style-type: none"> Biological Engineering [▪] Biomedical Engineering [▪] Computer Engineering [▪] Engineering Systems and Computing [▪] 	<ul style="list-style-type: none"> English Calculus Chemistry Physics 2 additional courses
Bachelor of Indigenous Environmental Science and Practice [▪] uoguel.ph/biesp 8 semesters (Honours Degree)		<ul style="list-style-type: none"> English Advanced Math† Biology Chemistry 2 additional courses
Bachelor of Landscape Architecture uoguel.ph/bla 8 semesters (Honours Degree)		<ul style="list-style-type: none"> English 5 additional courses Background Information Form required by March 1, 2024 admission.uoguelph.ca/bla_bif
Bachelor of Mathematics uoguel.ph/bmath 8 semesters (Honours Degree)	<ul style="list-style-type: none"> Mathematical Science 	<ul style="list-style-type: none"> English Calculus 4 additional courses
Bachelor of One Health [▪] uoguel.ph/boh 8 semesters (Honours degree)		<ul style="list-style-type: none"> English Advanced Math† 2 courses from: Biology, Chemistry, Physics 1 Arts or Social Studies course 1 additional course
Bachelor of Science uoguel.ph/bsc 6 semesters (General Degree) 8 semesters (Honours Degree)	Biological Sciences <ul style="list-style-type: none"> Animal Biology Biochemistry [▪] Biological Science Bio-Medical Science Biomedical Toxicology [▪] Food Science [▪] Human Kinetics 	<ul style="list-style-type: none"> English Advanced Math† 2 courses from: Biology, Chemistry, Physics 2 additional courses
	Physical Sciences <ul style="list-style-type: none"> Biological and Pharmaceutical Chemistry [▪] Chemistry [▪] 	<ul style="list-style-type: none"> Marine and Freshwater Biology [▪] Microbiology [▪] Molecular Biology and Genetics [▪] Neuroscience [▪] Nutritional and Nutraceutical Sciences [▪] Wildlife Biology and Conservation [▪] Zoology
Bachelor of Science in Agriculture* uoguel.ph/bscag 8 semesters (Honours Degree)	<ul style="list-style-type: none"> Animal Science [▪] Crop Science [▪] Honours Agriculture [▪] Horticulture [▪] 	<ul style="list-style-type: none"> English Advanced Math† 2 courses from: Biology, Chemistry, Physics 2 additional courses
Bachelor of Science in Environmental Sciences* uoguel.ph/bscenv 8 semesters (Honours Degree)	<ul style="list-style-type: none"> Ecology [▪] Environment and Resource Management [▪] Environmental Economics and Policy [▪] Environmental Sciences [▪] 	<ul style="list-style-type: none"> English Advanced Math† 2 courses from: Biology, Chemistry, Physics 2 additional courses
Doctor of Veterinary Medicine uoguel.ph/dvm 8 semesters	Application information can be found at ovc.uoguelph.ca/recruitment/en/applyingtodvm US applicants can also apply using VMCAS.	No direct admission from secondary school. A minimum of two years of a university undergraduate degree program is required for admission consideration. Students preparing for admission to the DVM program should take high school Biology, Chemistry, Physics and Advanced Math† or Calculus.
Associate Diplomas admission.uoguelph.ca/diploma 4 semesters	Associate Diplomas in: <ul style="list-style-type: none"> Agriculture (Ridgetown) [▪] Environmental Technician (Ridgetown) [▪] Equine Care and Management (Ridgetown) [▪] Horticulture (Ridgetown) [▪] Turfgrass Management (Guelph) [▪] Veterinary Technology (Ridgetown) 	Requirements: <ul style="list-style-type: none"> Secondary school diploma Veterinary Technology: <ul style="list-style-type: none"> Math, English, Biology and Chemistry

† Advanced Math is one of Pre-Calculus, Functions, (I)GCSE, CSEC, IB Math (only SL/HL Analysis & Approaches, HL Applications & Interpretations) or other equivalent Math containing Advanced Functions, Algebra, Geometry or Trigonometry, approved by Admission Services.

[▪] Offered as regular and co-op programs. [▪] Mandatory co-op programs. For programs with an undeclared option, we recommend you apply directly to a co-op major.

*Please note: for BSc. Agriculture and BSc. Environmental Sciences, first year is common; students will select a major in second year.



Admission Requirements

admission.uoguelph.ca/international/admreqs

Official Documentation

Applying from outside of Canada:

- High school transcripts and other required documentation to be uploaded to your Admission Portal for admission consideration.
- The possession of minimum entry requirements does not guarantee admission; we may require additional documentation or verification.
- An “official” transcript or exam result must be sent directly by your high school, examination board, an electronically verifiable source, via Parchment or wes.org only if you are admitted or upon request.

International Baccalaureate (IB)

Admission consideration begins with and includes:

- A marksheet with predicted IB grades reflecting the intention to complete the full IB Diploma with 6 subjects: 3 HL and 3 SL (including prerequisites) with a minimum score of 28 including bonus points from TOK and EE, however most programs will require a higher score.
- Predicted grades on a 7-point scale.

Note: Math Studies/SL Applications & Interpretations is not an acceptable prerequisite for programs that require Advanced Math† or Calculus.

Admitted students must present the full IB Diploma from the International Baccalaureate Organization (IBO) in July. Contact the IBO: transcripts.ibna@ibo.org to have your results sent electronically to the University.

- Transfer credits may be given for HL courses with scores of 5 or above, to a maximum of 2.0 credits and will be assigned once official transcripts are received from the IBO.

British Patterned Education

General Certificate of Education (GCE):

Admission consideration begins with and includes:

- Minimum of 2 A Level passes and 3 (I)GCSE Level passes.
- 2 AS Level courses may be substituted for 1 A Level course.
- A minimum of A/B or 6/7 to begin consideration on (I)GCSE, AS and predicted A Level examinations.
- Students are strongly encouraged to present prerequisite courses at the AS or A Level.
- Transfer credits will be considered for A Level subjects with a final grade of C or above, up to a maximum of 3.0 credits (1.0 credit per course).

Note: General paper is not considered an acceptable subject.

French Baccalaureate Diploma

Admission consideration begins with and includes:

- ‘Bulletins’ (in French) for Première and 1st trimester of Terminale with a minimum overall score of 12/20.
- Upon completion of the French Baccalaureate, official final results are required in lieu of the above.

Indian Curriculum

Admission consideration begins with and includes:

- Verified 10th standard board results accompanied by anticipated Class 12 grades listed by subject from the school with a minimum of 80%.
- Completion of Class 12 Board Exam Certificates with strong First Division standing is required in May/June.
- All information required by your school board to verify your Class 10 and 12 certificates.

American Patterned Education

Completing the USA High School Diploma:

Admission consideration begins with and includes:

- A minimum cumulative unweighted GPA of 3.0–3.9/4.0 (varies by program/major) from a regionally accredited high school.
- SAT/ACT Optional for Fall 2024 admission. If submitted, may be used if it is helpful to your admission.
- Prerequisite courses are ideal at the senior level.
- Transcripts from years 9–12 which include senior year first and second quarter grades submitted before March 15, 2024 (or February 1, 2024 for early consideration).
- School profile with a grading scale.
- Documents sent through Naviance/Parchment whenever possible.
- A personal statement (optional): Student Profile Form: admission.uoguelph.ca/spf.

Advanced Placement (AP):

- Applicants who have completed AP Examinations with a minimum grade of 4 may receive university credits to a maximum of 2.0 credits, at the Admission Committee’s discretion.
- Transfer credits will be assigned once official final transcripts have been received directly from the College Board.
- Institution code for the University of Guelph is 0892.

See admission.uoguelph.ca/ap for more details.

If you fall outside these curricula, please consult our requirements by country: admission.uoguelph.ca/international/admreqsinter

† Advanced Math is one of Pre-Calculus, Functions, (I)GCSE, CSEC, IB Math (only SL/HL Analysis & Approaches, HL Applications & Interpretations) or other equivalent Math containing Advanced Functions, Algebra, Geometry or Trigonometry, approved by Admission Services.



"I love the diversity within my program and the variety of majors to select from. This, along with the flexibility of choosing elective courses from outside my program allows me to forge my own path throughout my studies."

Wai Ling (Nikita) Wong
Bachelor of Science in Agriculture, animal science
Hometown: Hong Kong, China
High school: H.B. Beal SS, London, Ontario
Campus Involvement: University of Guelph Chinese Students and
Scholars Association



Requirements by Country

admission.uoguelph.ca/international/admreqs

ARGENTINA

Bachillerato with a minimum of 8.

AZERBAIJAN

Attestat — Certificate of (Completed) Secondary Education with a minimum combination of 4 and 5.

BAHAMAS

12 years schooling, a combination of British GCSE examinations and final Bahamas Grade 12 with strong grades. SAT I and II subject tests or Freshman Year College of the Bahamas may be requested for some schools. See also GCE and IB.

BANGLADESH

Higher Secondary Certificate (HSC) with first division pass (60–100).

BERMUDA

Bermuda Secondary School Certificate with excellent grades; 12 years schooling, a combination of British (B)GCSE examinations, Grade 12 University preparation level coursework (AP and SAT exam results upon request). See also IB, GCE and USA.

BOLIVIA

Bachillerato with a minimum of 5.5/7 or 75/100.

BRAZIL

Certificado de Ensino Médio (minimum 7.5) for admission consideration followed the Exame Nacional do Ensino Médio (ENEM).

CARIBBEAN

Students must complete the Caribbean Advanced Proficiency Examination (CAPE) diploma with a minimum of six individual subjects with at least two courses at the CAPE Level. Other subjects may be presented at the CSEC level. Predicted CAPE Level grades of 1 or 2 are required for admission consideration. Students going into Science or Engineering are encouraged to take a minimum of two 2-Unit CAPE Level subjects in Science and/or Mathematics. Transfer credit may be granted for 2-Unit courses at the Advanced Level with grades of 1, 2 or 3. Please note that Caribbean Studies and Communications Studies cannot be used for admission.

CHILE

Licencia de Educación Media with a minimum of approximately 5.5 out of 7.

CHINA

admission.uoguelph.ca/chinesecurriculum

Students progressing through Upper Middle School: the Academic Proficiency Test (APT)/HuiKao from CHESICC-Parchment Portal Service chsi.com.cn/en/pvr/apply.jsp with a minimum of 5 relevant required subjects for the degree and major, along with school documents for grades 10, 11, and first semester Grade 12 are required. Final official Upper Middle School Graduation Certificate will be required in Portugal from the CHESICC-Parchment Portal Service: chsi.com.cn/en/pvr/apply.jsp

COLOMBIA

Bachillerato with excellent results.

COSTA RICA

Bachillerato along with successful completion of first year at an accredited university is typically required.

ECUADOR

Bachillerato with a minimum of approximately 8 out of 10.

EGYPT

Thanaweya Amma — General Secondary Education Certificate or IB, USA, or French Baccalaureate with excellent results.

EL SALVADOR

Bachiller Academico with a minimum of approximately 8 out of 10.

ETHIOPIA

Ethiopia University Entrance Examination. Minimum for consideration begins at 78–80%.

GERMANY

Reifezeugnis / Abitur / Zeugnis der Allgemeinen Hochschulreife with a minimum 11 out of 15.

GHANA

West African Examinations Council (WAEC) exam results with a minimum B3 on predicted grades and a scratch card for confirmation required for finals.

GUATEMALA

Bachillerato with a university preparatory program with excellent results OR successful completion of first year accredited university is typically required.

HONG KONG

Hong Kong Diploma of Secondary Education (HKDSE) with a combination of 4 and 5. Predicted school marks must be presented on a 5 point scale.

INDONESIA

Surat Tanda Tamat Belajar Sekolah Menengah Umum (STTB-SMA) + EBANAS results with good/very good marks.

IRAN

Diplom-Motewaseteh (certificate of completion of secondary school studies) and passing the Konkûr with a minimum of 16.

ITALY

Diploma De Esame Di Stato with minimum 8 out of 10. See also IB and USA.

JAPAN

Upper Secondary School Leaving Certificate (Kotogakko Sotsugyo Shomeisho).

KAZAKHSTAN

Diploma of Completed Secondary Education with a minimum combination of 4 and 5.

KENYA

Kenyan Certificate of Secondary Education (KCSE) with grades of A and B.

KOREA (SOUTH)

Immumgye Kodung Hakkyo Choeup-chang (Academic Upper Secondary School Certificate) + College Scholastic Ability Test.

LEBANON

See French Baccalaureate, IB, USA, GCE.

LIBYA

High School Leaving Certificate.

MALAYSIA

Sijil Tinggi Persekolahan Malaysia (Malaysian Higher School Certificate) or Unified Examination Certificate (UEC). See also IB, USA, and GCE.

MAURITIUS

See GCE, French Baccalaureate and IB.

MEXICO

Bachillerato with very good/excellent results. Required subjects' descriptions may be requested.

MIDDLE EAST

Applicants from Bahrain, Jordan, Palestine, Kuwait, Oman, Qatar, Saudi Arabia, Syria, and Yemen must present the National Secondary School Education/Leaving Certificate (Tawjihiyah) with very good/excellent results overall and in appropriate subjects. Students from Kuwait should present the Shahad-al-thanawia-al-a-'ama (General Secondary School Certificate) with excellent results and those from UAE, the Secondary School Certificate (Shahadat Al-Thanawiya Al-Amma). See UAE for more details. Documents must be official and come from the school, Ministry or the appropriate Cultural Bureau.

NETHERLANDS

VWO (Voorbereidend Wetenschappelijk Onderwijs) Diploma with a minimum 7 out of 10.

NIGERIA

West African Examinations Council (WAEC) exam results. Minimum B3 on predicted grades and a scratch card for confirmation required for finals. See also GCE.

NORWAY

Vitnemal Fra den Videregaende Skole/ Certificate of Secondary Education.

PAKISTAN

Intermediate and Higher Secondary School Certificates with strong excellent to outstanding grades.

PANAMA

Bachillerato with a minimum of 85% for national curriculum schools.

PERU

Certificado de Educación Secundaria Común Completa and successful completion of one year of post-secondary studies at an accredited university.

PHILIPPINES

High School Diploma from a 12 year high school education system with a minimum B+.

POLAND

Świadectwo Dojrzałości Liceum Ogólnokształcącego with a minimum average of approximately 4.5 out of 6.

RUSSIA

Attestat o Srednem (Polnom) Obshchem Obrazovanii — Certificate of (Completed) Secondary Education with good grades.

SINGAPORE

Singapore/Cambridge GCE Ordinary and Advanced Level Examinations (see GCE requirements).

SOUTH AFRICA

National Senior Certificate (NSC) with a minimum high Meritorious to Outstanding for admission consideration.

SRI LANKA

Sri Lankan Certificate of Education including Ordinary Levels and at least 3 Advanced Level subjects with a minimum B average. See also GCE.

SWEDEN

Fullständig Slutbetyg from Gymnasieskolan.

SWITZERLAND

Federal School Leaving Certificate—Maturité/Maturität/Maturità with a minimum 5 out of 6 or 8 out of 10.

TAIWAN

Senior High School Certificate with 80% and above.

TANZANIA

Certificate of Secondary Education and Advanced Certificate of Secondary Education.

THAILAND

Mattayom 6 with superior academic standing (3.0 to 4.0 in all required core courses) may be considered. First-year standing in a recognized university is normally required.

TURKEY

Lise Diploması with very good to excellent results. Submission of a School Profile is expected.

UAE

Secondary School Certificate (Shahadat Al-Thanawiya Al-Amma) with a minimum B+ overall and in required subjects; see also, GCE, India, USA, IB, and Canadian curriculum.

UGANDA

Uganda Advanced Certificate of Education. Five academic subjects: English, with at least 3 academic A Levels of a minimum B to begin admission consideration. See also GCE.

UKRAINE

Atestat pro Povnu Zagal'nu Sredniyu Osvitu (Certificate of Complete General Secondary Education) with a minimum of approximately 8 out of 12 or 4 out of 5.

VENEZUELA

Bachillerato as well as successful completion of the first year at an accredited university is typically required. See also USA.

VIETNAM

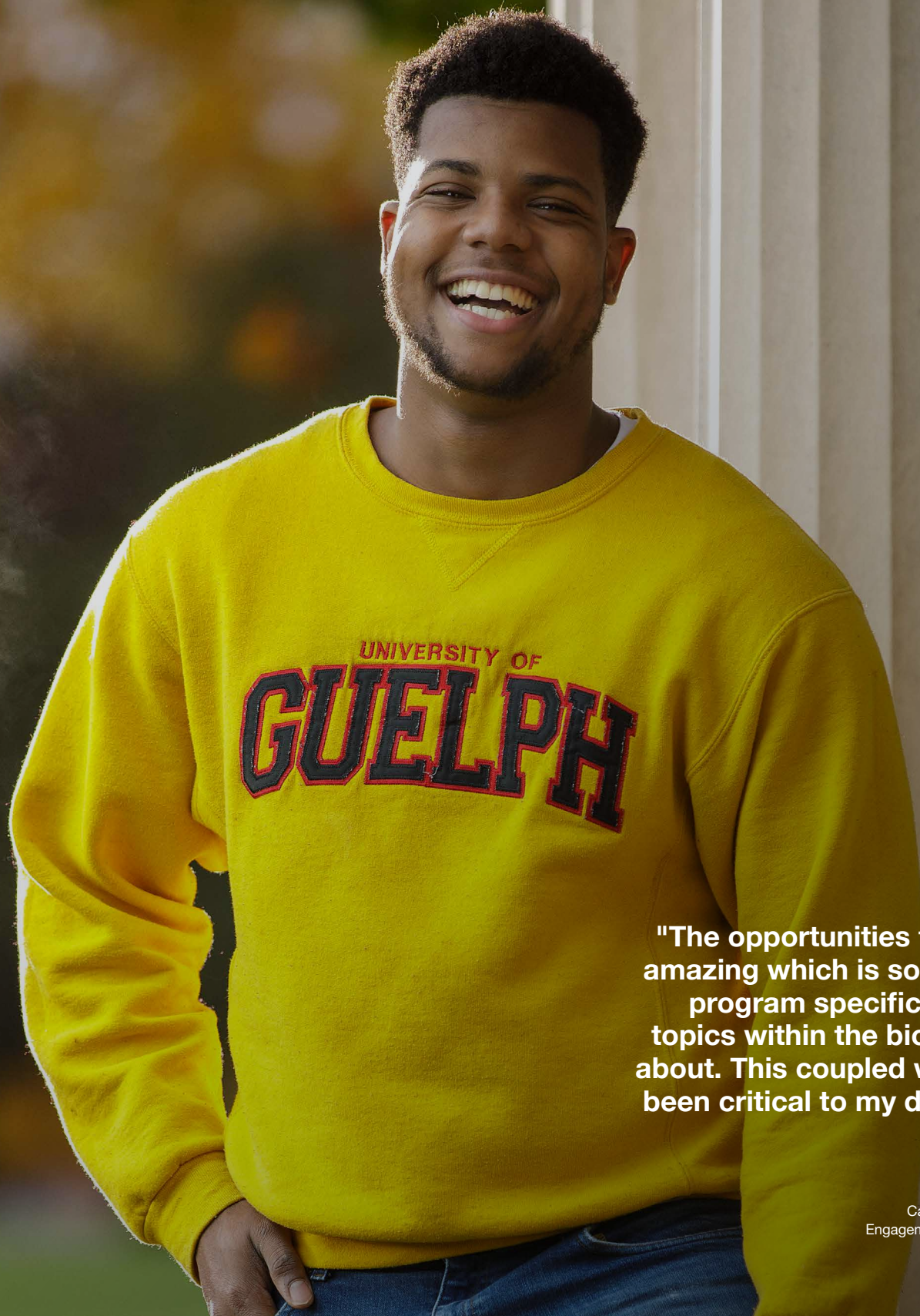
Bằng Tốt Nghiệp Phó Thông Trung Hoc (Upper Secondary School Graduation Certificate) with a minimum of 8.

ZAMBIA

Zambian School Certificate with 2 out of 9 (3 on finals).

ZIMBABWE

General Certificate of Education Ordinary Level (ZGCE O-Level) and Zimbabwe General Certificate of Education Advanced Level (ZGCE A-Level) with a minimum A/B combination. See also GCE.



"The opportunities to get involved at U of G are amazing which is something I really value. In my program specifically, I love the wide range of topics within the biomedical field that you learn about. This coupled with hands-on courses have been critical to my development as an engineer."

Zion Maynard

Bachelor of Engineering, biomedical engineering co-op

Hometown: Bridgetown, Barbados

High school: Queen's College Secondary School

Campus Involvement: University of Guelph Robotics, Cultural Engagement Team of the Peer Helper Program, Engineering Society



English Language Programs

elpguelph.ca

I want to focus on upgrading my English prior to enrolling in university courses:

English Language Certificate Program (ELCP)

elpguelph.ca

Program Start Dates: September, October, January, March, May and July

If you meet the academic admission requirements but are looking to develop your English language skills prior to beginning your degree program, the ELCP is the right choice for you.

The program:

- Consists of 10 levels (7 weeks per level) and covers academic reading, writing, listening and speaking.
- Meets English proficiency requirements of the University of Guelph when you successfully complete the Advanced Levels 9 & 10 and achieve the Advanced Certificate.

Please note:

- Applications for admission and scholarship to undergraduate programs at the University of Guelph or Guelph-Humber may be made prior to, during, or upon completion of the Advanced Certificate. Academically qualified semester one students may be admitted conditionally and will be considered for and granted undergraduate scholarships if they meet scholarship minimum requirements.

I want to study English while earning university credits:

Integrated Admission Pathway (IAP)

opened.uoguelph.ca/IAP

Program Start Date: September

This pathway provides an option for admission to the following degree programs, including co-op options, at the University of Guelph:

- Bachelor of Arts
- Bachelor of Bio-Resource Management
- Bachelor of Commerce (Undeclared)
- Bachelor of Science
- Bachelor of Science in Agriculture
- Bachelor of Science in Environmental Sciences

Your English language courses will provide a supportive learning environment with access to designated tutoring groups.

Requirements include:

- Minimum IELTS of 5.5, TOEFL iBT of 56 or equivalent.
- Meeting all admission requirements for your selected degree/major using the links below:

Canadian Provincial Education:

admission.uoguelph.ca/outofprov

International Curriculum Requirements:

admission.uoguelph.ca/international/admreqs

- Successful completion of the program involves maintaining a 75% average in your English language courses and a minimum 60% in your academic coursework during your degree-credit courses.

Apply to IAP Now:

admission.uoguelph.ca/international/englishprof/iap

I want to complete advanced English language courses while earning university credits, and receive guaranteed admission to Bachelor of Commerce or Bachelor of Arts for next year:

Guaranteed Admission Pathway (GAP)

opened.uoguelph.ca/GAP

If your English proficiency and/or grades do not meet admission requirements, you may want to consider the GAP.

The combination of the English Language Certificate Program (ELCP) and the Open Learning program provides a flexible option for guaranteed admission to our Bachelor of Commerce and Bachelor of Arts degrees. Save time by completing online courses toward your degree while you are completing your Advanced Certificate.

To be eligible to begin Open Learning degree-credit courses while completing the advanced level of ELCP, you must:

- Have no previous post-secondary studies.
- Achieve an overall average of 80% or higher in levels 7 and 8, or in levels 8 and 9.

Note: The GAP may also be considered as a stand-alone upgrading program, if you do not meet the minimum admission requirements to your degree/major.

English Proficiency

admission.uoguelph.ca/international/englishprof



Learn from Canadians

Homestay Option

Live with a local family and be immersed in language and culture! The Homestay Program is designed to help you transition into your life in Canada. This housing option will provide you with an excellent opportunity to learn about Canadian culture by living with a Canadian family during your studies.

Buddy Program

Our Buddy Program allows you to make informal connections with students. Go to the movies or sporting events together, have coffee or explore any common interests you might have. It's a great way to make friends and learn about the University of Guelph!

ELCP & GAP Program Features

- Small class sizes
- Help with degree applications
- Highly qualified instructors and staff
- Cultural and social activities
- Weekly conversation tutors
- Volunteer Opportunities

Upcoming Program Offerings:

Start Dates:

- September 7, 2023
- October 30, 2023
- January 8, 2024
- March 4, 2024
- May 6, 2024
- July 2, 2024

Test	Required Scores
Advanced Level of the English Language Certificate Program (ELCP) <i>eljpguelph.ca</i>	Successful completion of the Advanced Certificate (Levels 9 and 10).
Cambridge English: C1 Advanced and C2 Proficiency <i>cambridgeenglish.org</i>	Minimum overall score of 176 with no band less than 169.
Canadian Academic English (CAEL) <i>cael.ca</i>	Paper and Computer based: Language Assessment Minimum overall band score of 70.
Duolingo English Test <i>englishtest.duolingo.com</i>	Minimum overall score of 110. Individual subscores may be considered.
International English Language Testing System (IELTS) <i>ielts.org</i>	Paper and Computer based: Minimum overall score of 6.5 with no band less than 6.
Pearson Test of English (PTE) <i>pearsonpte.com</i>	Minimum overall score of 60 with no score less than 60 in the individual components.
Test of English as a Foreign Language (TOEFL) <i>toefl.org</i>	For both internet-based and home-edition tests: Minimum total score of 89 with no individual scaled score less than 21.

The University of Guelph institution code is 0892.

Students educated in a language other than English will be required to present evidence of English Proficiency if:

- Your primary or first language is not English, AND
- You have had less than four years of full-time secondary school or post-secondary school study, demonstrating satisfactory academic progress, in an English-language school system.

The U of G reserves the right to deny admission to applicants who do not demonstrate satisfactory facility in English, regardless of academic qualifications.

In order to show English Proficiency, students must meet one of the requirements shown in the chart as part of the admission process by the document deadline of **March 15, 2024**. For early consideration, please submit your documents by **February 1, 2024**.

On campus English Language Program options are listed on **page 22**.



How to Apply

admission.uoguelph.ca/intl/howtoapply

Your application to the University of Guelph opens the door to rich, varied experiences within a welcoming, involved community.

Apply by January 15, 2024 for early admission consideration!

International Applicants

Three ways to apply:

- Apply directly to the University of Guelph using the online form available at admission.uoguelph.ca/intl/app, or
- Apply online through the Ontario Universities' Application Centre (OUAC) at ouac.on.ca using the Undergraduate Application, or
- Apply with the Common Application at apply.commonapp.org.

Canadian Citizen or Permanent Resident of Canada Applicants

Studying outside of Canada:

- Apply online through the Ontario Universities' Application Centre (OUAC) at ouac.on.ca using the Undergraduate Application.

International Transfer/Advanced Standing Applicants

admission.uoguelph.ca/exttransfer

If you are an international applicant who has previously attended college or university, please consult our International Transfer Student Admission Requirements at admission.uoguelph.ca/exttransfer for detailed information. Available intakes for transfer students are Fall, Winter and Summer. Transfer students interested in January admission (Winter) should consult Admission Services for program availability.

9 STEPS TO APPLY

To be considered for admission, scholarships and on-campus accommodation, please:

1. Select the program of study and check the program specific admission information on **pages 16 and 17**.
2. Check requirements by country on **page 20** and English Proficiency requirements on **page 23**.
3. Check to see if your program is offered at the University of Guelph, University of Guelph-Humber or Ridgetown Campus.
4. Fill in and submit the appropriate Application Form along with your fee. All applications can be found at uoguelph.ca/intappforms.
5. When you apply, you will receive a U of G account, login information and instructions on how to upload your documents to your Admission Portal. Submit the appropriate high school transcripts and other required documentation directly to your Admission Portal. Applicants to the University of Guelph-Humber and Ridgetown Campus will receive separate document submission instructions.
6. Some programs have supplemental forms. See admission.uoguelph.ca/canadian/suppdocs for details.
7. Submit English Proficiency test scores to the Admission Portal. IELTS scores may be scanned and verified on-site. All other test scores must be sent officially.
8. You are encouraged to submit the online Student Profile Form found at admission.uoguelph.ca/spf.
9. Check your Admission Portal for any required or outstanding documents.

International Students may need a Study Permit to study at the University of Guelph. Refer to Immigration, Refugees and Citizenship Canada (IRCC) (canada.ca/en/immigration-refugees-citizenship/services/study-canada/study-permit.html) for more information. Our **DLI # is O19305391192**. If you have any questions, contact the Global Pre-Arrival Support Advisor at gpsadvisor@uoguelph.ca.



"I'm so glad I took the chance and applied to a school in a different country because my experiences both in and outside the classroom have made it so worthwhile! I recently had the opportunity to shadow in the neurology specialty of the referral hospital, and while I was there, I got to scrub in and observe a spinal surgery. It was one of the coolest things I've ever seen."

Emma Gellman

Doctor of Veterinary Medicine

Hometown: Santa Cruz, California, USA

High school: Kirby School

Undergraduate: Wellesley College, Massachusetts, USA

Campus Involvement: Senior Events Coordinator for the Zoo, Exotics, and Wildlife (ZEW) Club, Social Media and Advertising Committee Head for Global Vets 2023, International Peer Helper for DVM students



Important Deadlines for Fall 2024

admission.uoguelph.ca/impdate

JANUARY

15

- Application deadline for currently enrolled high school students to be considered for early admission.
- Student Profile Forms (SPF) are encouraged at this time for all applicants residing outside of Canada (see step 8 on page 24).

25

- Application deadline for the Dr. Franco J. Vaccarino President's Scholarship.

FEBRUARY

1

- Deadline for high school students to submit documents (including English Proficiency), to be considered for early admission.

16

- Diploma in Turfgrass Management Background Information Form (BIF) submission deadline.

MARCH

1

Deadline for:

- Undergraduate applications from high school students. We continue to consider applications after this date, however, degrees and majors are subject to application closures.
- Bachelor of Landscape Architecture (BLA) Background Information Form (BIF) submission for all currently enrolled high school students.
- Student Profile Form (SPF) submissions for all currently enrolled high school students.
- Supplemental Information Form for Students with Disabilities (SIF-D) submission.

15

- Deadline for high school students to submit documents (including English Proficiency), to be considered for admission. Applicants may request and be granted admission consideration without English Proficiency upon request by writing to intapps@uoguelph.ca. Requests to study in our English Language Programs are also encouraged at this time if this deadline cannot be met.

APRIL

15

- Deadline to amend your application in order to be considered equally for all programs, except for BLA.
- Deadline to submit the Financial Need Assessment Form for Canadian Citizens and Permanent Residents.

MAY

1

Deadline for:

- Accepting your offer of admission as an internationally educated high school student to the University of Guelph.
- Applications from college or university transfer applicants (for fall 2024 entry).
- Bachelor of Landscape Architecture (BLA) Background Information Form (BIF) submissions from college and university transfer students.

15

- Deadline for all international fee-paying students to submit the \$1000 tuition deposit.

JUNE

3

- Deadline for residence application and \$750 deposit to be guaranteed a space for fall 2024 and winter 2025.
- Document submission deadline date for college and university transfer applicants for most programs for fall 2024 entry.

AUGUST

9

- Deadline for official transcripts and English Proficiency results for all high school applicants studying outside of Canada for fall 2024 entry (students in A Levels and CAPE will be granted extensions to align with exam release dates).



How much will it cost?

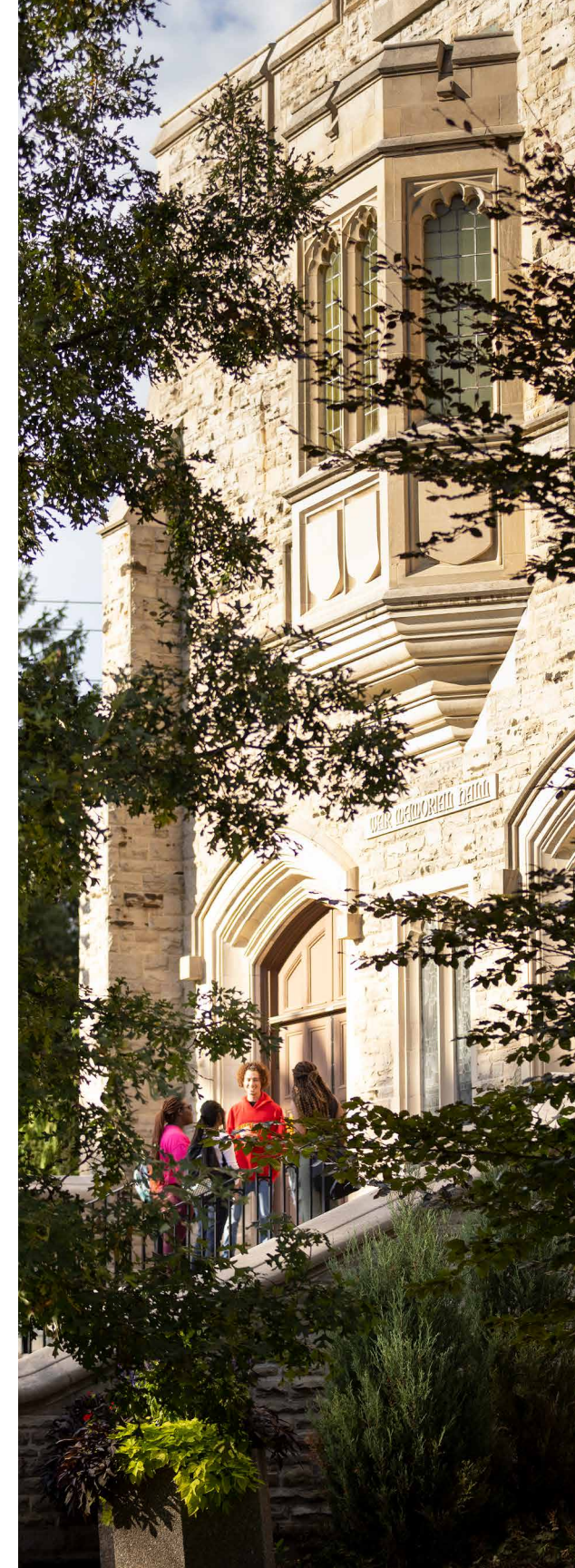
admission.uoguelph.ca/international-funding-education

Fee	Cost (two semesters)	Notes
Tuition	<ul style="list-style-type: none"> • Bachelor of Applied Science: \$33,046 • Bachelor of Arts: \$33,046 • Bachelor of Creative Arts, Health and Wellness: \$33,046 • Bachelor of Arts and Sciences: \$33,046 • Bachelor of Bio-Resource Management: \$33,046 • Bachelor of Commerce: \$40,246 • Bachelor of Computing: \$39,361 • Bachelor of Engineering: \$49,110 • Bachelor of Indigenous Environmental Science and Practice: \$33,046 • Bachelor of Landscape Architecture: \$43,816 • Bachelor of Mathematics: \$33,046 • Bachelor of One Health: \$33,046 • Bachelor of Science: \$33,046 • Bachelor of Science in Agriculture: \$33,046 • Bachelor of Science in Environmental Science: \$33,046 • Doctor of Veterinary Medicine: \$83,614 	<p>We can guarantee that your tuition rates will not increase more than 5% annually. This will allow you to plan in advance for the cost of your education.</p> <p>Please refer to uoguelph.ca/registrar/studentfinance/fees/international-faq for more information.</p>
Compulsory Fees	\$1,632–\$1,784	Compulsory fees include health and dental plans, academic support, athletics, and health and counselling services.
Residence	\$6,846–\$9,992	housing.uoguelph.ca
Meal Plan	\$4,980–\$7,208	hospitality.uoguelph.ca
Textbooks	\$1,400	Estimated cost for textbooks. Students may add a textbook plan to any meal plan for \$1,000.
Personal Expenses	\$2,500	Estimated.
Health Insurance	\$756	Mandatory for all international students. See below.
TOTAL:	\$51,160–\$72,750	

Disclaimer: Fees are estimated based on the 2023/2024 academic year and are subject to change. Students should also factor in travel costs, equipment fees, and personal living expenses. Housing and food costs will vary depending on lifestyle. Meal plans are mandatory except for those living in the East Residence apartments and East Village townhouses.

Co-op students pay an additional \$330 per semester for academic and work semesters. Canadian Citizens and Permanent Residents of Canada should consult uoguelph.ca/studentfin for tuition information.

University Health Insurance Plan (UHIP): UHIP is the general health coverage for medical services such as visiting the doctor, visiting or staying in the hospital, medication while hospitalized, surgery, laboratory tests, x-rays, other diagnostic tests and other hospital services.



Scholarships



admission.uoguelph.ca/international-funding-education

International Entrance Scholarships

Awarded on a competitive basis to new students entering their first semester in the fall. Students must have a complete admission file by the final document deadline of **March 1, 2024** to be considered. No scholarship application is required. Eligible students will be notified through their offer of admission.

Amount for Year 1	Annual Renewal Amount (years 2, 3, and 4)	Overall 4 Year total
\$8,500	\$4,000	\$20,500
\$7,500	\$4,000	\$19,500
\$6,500	\$4,000	\$18,500
\$5,500	\$4,000	\$17,500

Students offered an International Entrance Scholarship will automatically be awarded renewable amounts if all criteria are met. See uoguelph.ca/studentfin for criteria.

THE DR. FRANCO J. VACCARINO PRESIDENT'S SCHOLARSHIP

\$42,500

Awarded to a top international student who is entering with academic excellence and who has made significant leadership contributions to their school and community. The total value of the scholarship is \$42,500 (\$8,250 annually for four years of study, plus one \$9,500 stipend for a summer research assistantship position after first year). Apply by **January 25, 2024**. Please visit uoguelph.ca/intscholar for more information.

INTERNATIONAL IN-COURSE SCHOLARSHIPS AND BURSARIES

In-course scholarships are designed to reward academic excellence and outstanding achievements of current students. In 2022, the University of Guelph awarded more than \$6.26 million in upper-year scholarships.

Bursaries are intended to assist international students that are experiencing an unforeseen and/or unexpected financial situation or emergency. Academic achievement is not a consideration when awarding bursaries.

Students must complete one full year of studies at U of G to be considered for in-course scholarships and bursaries.

FATEMEH HAGHIGHI INTERNATIONAL SCHOLARSHIP

\$1,000

Selection will be based on academic performance and an assessment of the admission application package. Preference will be given to students from Iran entering the B.Comp. program, followed by students entering any program offered by the College of Engineering and Physical Sciences. Application not required.

HARDY INTERNATIONAL STUDENT SCHOLARSHIP

\$2,000

Selection is based on the assessment of the student's admission application and preference is given to students from Haiti and Africa. Application not required.

JANE WIGHT T&T SCHOLARSHIP

\$1,000

Preference will be given to students from Trinidad & Tobago entering a B.Comm. program offered by the Gordon S. Lang School of Business and Economics. Apply by letter by **April 15, 2024**.

OAC 1973 INTERNATIONAL ENTRANCE SCHOLARSHIP

\$1,000

Students entering any degree program offered by the Ontario Agricultural College. Preference will be given to students coming from Central America, Mexico, South America and the Caribbean. Apply by letter by **April 15, 2024**.

QUINN FAMILY MEMORIAL SCHOLARSHIP

\$2,000

Students entering any degree program offered by the Ontario Agricultural College. Preference will be given to students coming from a country categorized as the world's least developed by the OECD. Application not required.

\$27.1M

The amount 7,637 students received in awards, including \$10.2 million in need-based awards, in 2022-2023!



TOYGAR EARNED MORE THAN \$120,000 DURING HIS STUDIES.

Here's how he did it:

- I made \$63,000 through co-op placements.
- When I wasn't in co-op, I worked part-time during my studies and made \$35,000.
- I received \$6,000 in need-based bursaries and \$12,000 in merit-based scholarships.
- I used the free library service to rent textbooks and saved over \$2,500.
- I also attended training seminars that taught me personal financial literacy.



Toygar Yildirim
Bachelor of Commerce, marketing management, co-op
Hometown: Istanbul, Turkey
High school: The Koc School
Campus Involvement: Peer Helper Program, University
of Guelph Ambassador, Work Study Student
Current Employment: Porsche Canada

Helping you pay

uoguelph.ca/studentfin



Work Study Program

Our Work Study program creates part-time employment on campus for hundreds of students who have financial need. International students may apply for Work Study funding in their second year of university.

Part-time Jobs

More than 4,000 on-campus jobs are available on a competitive basis. Work in one of the many campus eateries, in the athletics centre, or any of the retail locations on campus. There are many jobs available throughout the city, too. Guelph is big enough to offer lots of opportunity and small enough to get around easily! We know that part-time work is an important part of subsidizing the cost of your education.

Co-operative Education

Enrolling into a co-op program allows you to work full-time during work terms, earning \$500-\$1,000 CAD per week depending on your job! See page 10 for details.

450+

WORK STUDY POSITIONS

250+

PEER HELPER POSITIONS

4,000+

PART-TIME JOBS

150+

POSITIONS IN RESIDENCE LIFE



Residence

housing.uoguelph.ca

WHERE CAMPUS COMES TO LIFE.

Residence has all the amenities you'll need: proximity to your classes, campus food, 24-hour assistance, free laundry and Wi-Fi, study spaces, lounges, and staff to support you on your journey.

Follow [@UofGHousing](https://www.instagram.com/UofGHousing) on Instagram for updates and visit housing.uoguelph.ca/tours to explore our residences.

• GUARANTEED

As an international student, you are guaranteed on-campus housing as long as you apply and pay the \$750 CAD residence deposit by June 3, 2024.

More information about eligibility for on-campus housing can be found at housing.uoguelph.ca.



SINGLE ROOM



DOUBLE ROOM



TOWNHOUSE

South Residences

- Mountain, Prairie and Maritime Halls house 1,800 students.
- More single rooms here than any other residence.
- Co-ed living facilities.
- Two dining halls in Mountain and Prairie.

North Residences

- Lambton offers suites with washrooms and kitchenettes.
- Lennox Addington has its own Starbucks.
- Johnston Hall is the most iconic stone building on campus.
- Arts House is where creative energy thrives.
- Mills Hall includes a fireplace lounge and lofted beds.
- Watson Hall is female only.

East Residences

- Dundas, Lanark and Glengarry are shared apartments with full kitchens.
- East Village is made up of townhouses, each with four private bedrooms, two shared washrooms, kitchen, living and dining rooms.

Dining on Campus

hospitality.uoguelph.ca



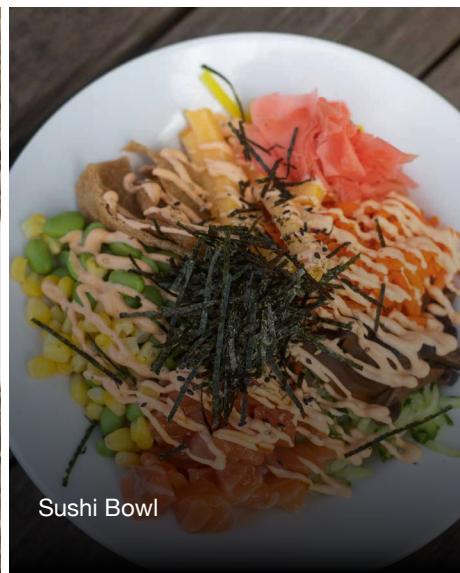
Nabeyaki Udon



Banana and Strawberry Waffle



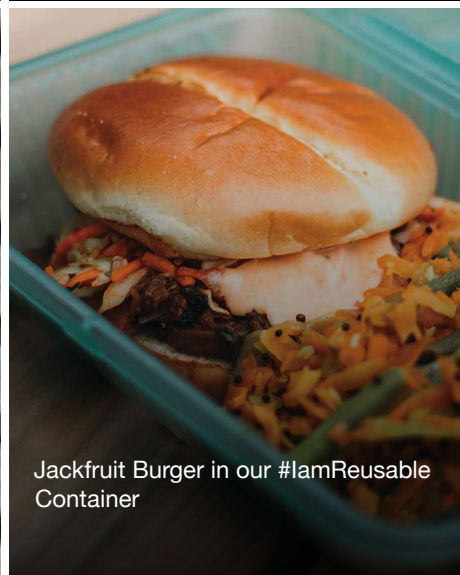
Bibimbap



Sushi Bowl



Chicken Shawarma on Fries



Jackfruit Burger in our #IamReusable Container

INTERNATIONAL FLAVOURS, LOCAL INGREDIENTS.

For years, we've been voted as having the best campus food of any Canadian university. Our secret? We make it all ourselves. We have a strong commitment to serving food that's good for you and the planet too.

Check out the Hospitality website to learn more and follow [@HospitalityUofG](https://www.instagram.com/HospitalityUofG) on Instagram for updates, menus and daily delicious posts!

Dietary Restrictions

hospitality.uoguelph.ca/snap

Halal? Kosher? Vegan? No problem! Our meal plan has food to match every dietary restriction or preference.

Your Campus Card

campuscard.uoguelph.ca

Your Campus Card (ID card) is your meal card. Just tap it like a debit card.



Athletics and Recreation

gryphons.ca

9000+

INTRAMURAL PARTICIPANTS IN 20 DIFFERENT SPORTS

35+

CLASSES SUCH AS TRX, YOGA, PILATES, CYCLE, ZUMBA, AQUAFIT AND MORE!

22,000

SQ.FT. FITNESS CENTRE

FREE

ENTRY TO VARSITY GAMES FOR U OF G STUDENTS

Varsity Sports & Clubs

gryphons.ca

● = Men ● = Women ● = Clubs

Artistic Swimming	●
Badminton	● ● ●
Baseball	●
Basketball	● ●
Cheerleading	●
Climbing	●
Cross-Country	● ●
Curling	● ●
Dance Pak	●
Dragon Boat	●
Equestrian	●
Field Hockey	● ●
Figure Skating	● ●
Football	●
Golf	● ●
Hockey	● ●
Lacrosse	● ●
Nerf	●
Nordic Skiing	● ●
Quadball	●
Ringette	●
Rowing	● ●
Rugby	● ●
Soccer	● ●
Softball	●
Swimming	● ●
Squash	● ●
Tap Pack	●
Tennis	●
Track and Field	● ●
Ultimate Frisbee	●
Underwater Hockey	●
Urban Hip Hop	●
Volleyball	● ●
Water Polo	●
Women's Football	●
Wrestling	● ●

Facilities

gryphons.ca

Indoor

- Twin pad arena
- 2 pools
- Suspended running track
- 3 gyms
- 5 squash courts
- 1 climbing wall
- 9 dance / multi-purpose studios
- Fitness centre
- 2 wrestling / combative rooms
- Hot tub / whirlpool
- Indoor fieldhouse with 4-lane running track

Outdoor

- Stadium
- 8-lane IAAF track
- 2 grass fields
- Mini-specialized training field
- 3 ball diamonds
- 4 beach volleyball courts
- Jogging trails
- 3 multi-purpose lit artificial fields

Intramurals

gryphons.ca

- 15+ Intramural Sports
- Competitive, Recreational, Fun and first-year leagues available

Clubs and Organizations

gryphlife.uoguelph.ca



Clubs and organizations span cultural and religious interests, media and performing arts, sports, academics and community service.

Join a student government - represent your residence hall, your academic college or the entire university!

With more than 200 clubs, we can't fit them all on one page, but here's a sample:

- Canadian Asian Student Society
- Contemporary Music Ensemble
- Engineers Without Borders
- Future Vets Club
- Guelph Black Students Association
- Habitat for Humanity
- Indian Students Association
- International Student Organization
- Muslim Students Association
- University Catholic Community
- World University Service of Canada

GET INVOLVED



Living your best life

uoguelph.ca/studentexperience

HERE WITH SUPPORT EVERY STEP OF THE WAY.

Even before you arrive, we've got your back! **START U of G** is your guide to coming to U of G. Connect with other students, and get all the info you need for September!

Global Pre-Arrival Support (GPS) Advising

uoguelph/gps

The Global Pre-Arrival Support team provides support to new international students from when you get an offer of admission through to your first semester.

The GPS team can assist you with navigating information and supports related to:

- Housing
- Financial Planning
- Course Registration
- Health Insurance
- Arriving in Canada
- Initial study permit applications
- Co-op Work Permits
- Temporary Resident visas (TRV) / Electronic Travel Authorizations (eTA)
- Work eligibility as an international student
- Other immigration-related support

START International

uoguelph/start

This orientation program for international students, exchange students and out-of-country Canadians helps you make connections and settle into your new home before Orientation Week begins. It features info sessions about academic life, resources to help you succeed, space to meet and connect with upper year students and staff, and campus tours and social gatherings.



“The University of Guelph is committed to providing unwavering support and guidance to international students. We offer a wide variety of services to ensure your academic and personal fulfillment throughout your time as a student and beyond.”

Pugaleni lynkaran (she/her), RISIA Manager, Global Pre-Arrival Support



HEALTHY MIND AND BODY

Wellness and Support

wellness.uoguelph.ca

Student Wellness is dedicated to providing health and well-being supports, events, and services to current University of Guelph students, for *free, all year long!

- Counselling
- Student Health Services
- Health & Performance Centre (HPC)
- Sexual and Gender-Based Violence Support & Education
- Student Accessibility Services (SAS)
- Student Support Network (SSN)
- Wellness Education & Promotion Centre

*Does not include services provided by the Health & Performance Centre

Students with Disabilities

wellness.uoguelph.ca/accessibility

Student Accessibility Services helps with equitable access to the academic environment. We support all types of disabilities - permanent and temporary, evident and non-evident, episodic or relatively unchanging. Whether your disability is new or has been with you your whole life, please contact us as soon as you've been admitted.

Student Experience

uoguelph.ca/studentexperience

Student Experience supports the transition to campus and orientation needs of all students, including students identifying as First Nations, Inuit, Métis, Black, racialized, members of the LGBTQ2IA+ community, and students from cultural, international, religious, and spiritual communities. We provide programs where you can build community, explore lived experiences, and support your personal development.

Faith and Spirituality

The Multi-Faith Resource Team represents a number of faiths and works together to meet the religious and spiritual needs of the University community.

Black and Racialized Students

Cultural Diversity Services in the department of Student Experience supports the development of Black and racialized students. We provide services such as wellness support, cultural and transition support, student advising, and identity-based programming and resources.

LGBTQ2IA+ Students

The Sexual and Gender Diversity Advisor provides resources, programs and advising support for LGBTQ2IA+ students. OUTline is a peer-to-peer resource and support service specializing in community building and information relating to sexual orientation and gender identity.

First Nations, Inuit and Métis Students

The Indigenous Student Centre provides a culturally supportive environment that fosters academic excellence and supports the intellectual, spiritual, emotional and physical development of all First Nations (status and non-status), Inuit and Métis students. We provide student advising and wellness support, cultural and educational programming as well as academic and financial information.



University of Guelph-Humber

guelphhumber.ca/futurestudents

MORE IN 4 YEARS!

Why Choose the University of Guelph-Humber?

Study in Toronto, Canada. You will earn an honours degree granted from the University of Guelph and a diploma granted from the Humber College Institute of Technology & Advanced Learning, concurrently. Workplace experience is built into every program.

UNIVERSITY OF
GUELPH
HUMBER

TORONTO, ON

PROGRAMS

BUSINESS

Honours Bachelor of Business Administration
+
Diploma in Business Administration

COMMUNITY SOCIAL SERVICES

Honours Bachelor of Applied Science
in Community Social Services
+
Social Service Worker Diploma

EARLY CHILDHOOD STUDIES

Honours Bachelor of Applied Science
in Early Childhood Studies
+
Diploma in Early Childhood Education

JUSTICE STUDIES

Honours Bachelor of Applied Science in
Justice Studies
+
Diploma in Police Foundations or Community
and Justice Services

KINESIOLOGY

Honours Bachelor of Applied Science in Kinesiology
+
Diploma in Fitness and Health Promotion

MEDIA AND COMMUNICATION STUDIES

Honours Bachelor of Applied Arts in Media and
Communication Studies
+
Diploma in Media Communications

PSYCHOLOGY

Honours Bachelor of Applied Science in Psychology
+
Diploma in General Arts and Science
+
Optional certificate (granted by Humber) in
Intercultural Relations, Organizational Behaviour
or Research Skills and Analysis

Admission Requirements

Secondary School Applicants:

For international admission requirements, please refer to the University of Guelph's admission requirement information on pages 16-21, however there are a few exceptions:

- Applying with an IB diploma: you should present a minimum score of 24. Reported bonus points will be taken into consideration. Any Higher Level or Standard Level mathematics course is an acceptable prerequisite for programs that require math.
- Applicants from India: you will be considered based on verified 10th Standard Board results accompanied by anticipated Class 12 grades listed by subject, submitted by your school, with a minimum average of 70% inclusive of subject requirements. If you apply to the Business program, you can be considered using any senior level mathematics.

How to Apply

January 2024 entry (Business only)

- **Application and Document Deadline:**
November 1, 2023

September 2024 entry (all programs)

- **Application and Document Deadline:**
May 1, 2024

International Applications:

Choose one of three options to apply:

- Apply online through the Ontario Universities' Application Centre at ouac.on.ca.
- Apply through guelphhumber.ca/futurestudents/international-apply (if applying to only the University of Guelph-Humber)
- Apply with the Common Application at apply.commonapp.org.

Please have your school administrator/counsellor send your required documents, including predicted scores and official transcripts, to international@guelphhumber.ca. Conditional offers of admission can be made based on predicted scores. Admission Services will provide you with a University WebAdvisor account to monitor document submission status.

Entrance Scholarships

International Student Entrance Scholarship

- Receive up to \$20,500 CAD (over 4 years)
- Renewable
- First-year award ranges from \$2,000 CAD to \$8,500 CAD
- Automatically considered
- Eligible to receive an award of \$4,000 CAD each renewal year

Tuition and Fees

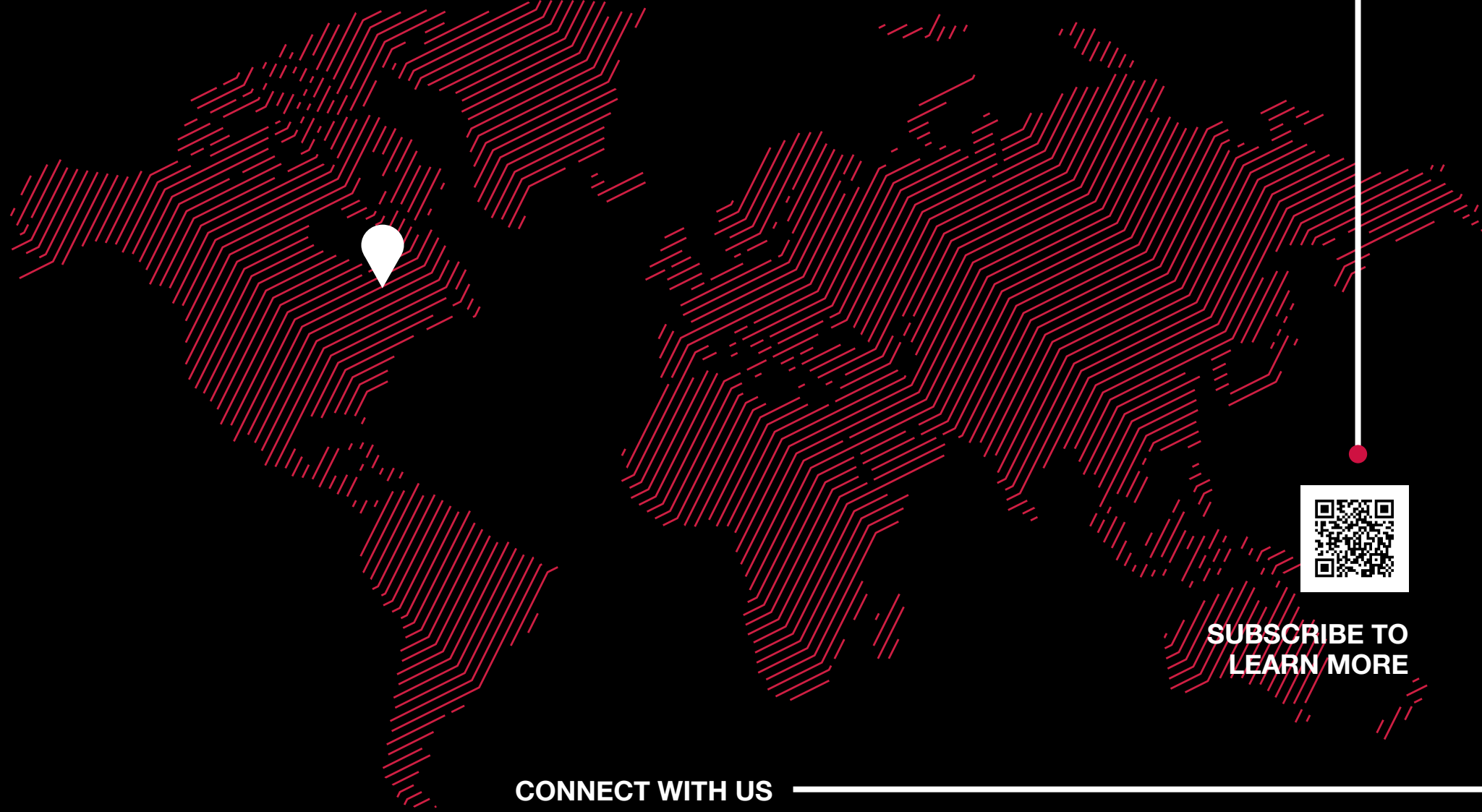
Estimated Expenses (Per Year in CAD)	
Tuition	\$31,833-\$36,581
Student Fees	\$1,082
Health Insurance	\$420
On-campus Housing	\$7,840
Dining Plan	Bronze: \$2,350 Silver: \$2,850 Gold: \$3,400 Platinum: \$4,000
TOTAL	\$43,525-\$49,923*

**All values are estimates only based on 2023-2024 rates and therefore subject to change. Other fees/costs may apply.*

Housing

International applicants are given "preferred status" to help secure their room booking, however residence cannot be guaranteed. We recommend you apply for residence as soon as you receive an offer of admission. Find more details and the application by visiting guelphhumber.ca/futurestudents.

For more information about the University of Guelph-Humber, please visit guelphhumber.ca/futurestudents, email us at international@guelphhumber.ca or call +1 416.798.1331 x17798.



**SUBSCRIBE TO
LEARN MORE**

CONNECT WITH US

EXPLORE U OF G AND APPLY

admission.uoguelph.ca/international

CHAT WITH CURRENT STUDENTS

uoguelph.com/internationalchat

ATTEND AN UPCOMING EVENT

uoguelph.com/internationalevents

SEE CAMPUS FROM HOME

uoguelph.com/interactivemap

FOLLOW US ON SOCIAL

 [UofGAdmission](#)

 [UofGAdmission](#)

 [UofGuelph](#)

 [UofGuelphAdmission](#)

EMAIL OR CALL

internat@uoguelph.ca

(+1) 519-767-5024



©2023 The University of Guelph makes every effort to ensure the information contained herein is as current as possible. The University reserves the right to make changes to policies, programs and services described in this publication without prior notice.