

**Research Innovation Entrepreneurship**



International Student Admission English Taught Undergraduate Program 2021

Southern University of Science and Technology (SUSTech) is a research-oriented public university established in 2010 in Shenzhen, China's innovation center. It is widely regarded as a pioneer in moving China's higher education reform forward to match the country's ever-growing role in the international arena.

**About SUSTech**

**Research Innovation Entrepreneurship**



**Mission**

**Service Mission**

- Contribute to the innovative development of China.
- Boost the economic and societal progress of Guangdong.
- Help Shenzhen become a modern, international and innovative city.

**Reform Mission**

- Pilot higher education reform.
- Become a testbed for excellent research university practice.
- Develop a modern Chinese university system.

**Educational Goals**

- Prepare graduates to be innovative, versatile leaders on the global stage.
- Develop into a world-class research university.
- Conduct high-quality, socially-impactful research.
- Become an engine for sustainable development in the Pearl River Delta.

**Milestones:**

**1st** in mainland China for

- Citations** (THE World University Rankings 2020)
- International collaboration relative to country** (US NEWS 2021)
- Faculty-student ratio** (QS World 2021)
- Percentage of teaching staff with PhD** (QS Asia 2021)



- 1st** in ASIA for faculty-student ratio (QS Asia 2021)
- 8th** in mainland China overall (THE World University Rankings 2021)
- 53rd** in the world (Nature Index August 2020)
- Best** mainland China university under 50 years old (THE Young Universities 2020, QS Top 50 Under 50 2021)

**Location**

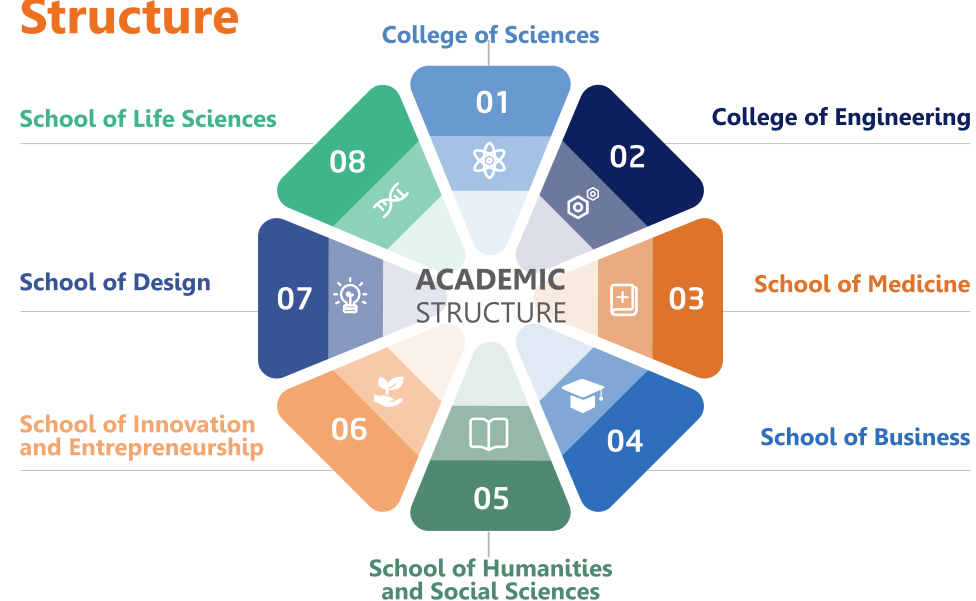
Situated in the booming Greater Bay Area, Shenzhen is an international hub of innovation



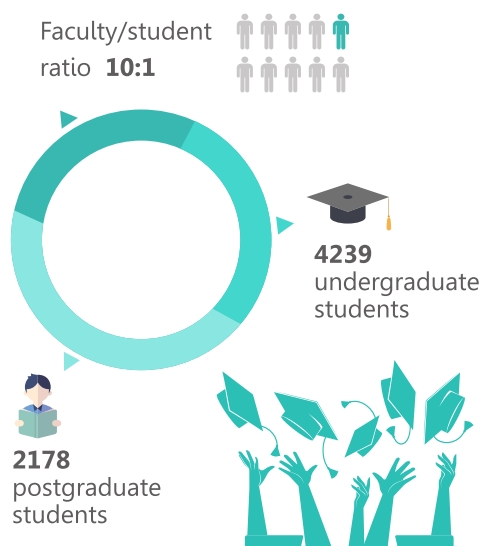
**Shenzhen**



**Organizational Structure**



**Student Body**



**Faculty Data**

60% are from the top 100 universities in the world

- 800+ Faculty members
- 90% have international working experience
- 100% hold PhD degrees
- 43 Academicians

**World Rankings**

Essential Science Indicators (ESI) 2020: chemistry, materials science, engineering, clinical medicine - **top 1%** in the world

Nature Index 2018 Rising Stars: **1st** amongst the world's fastest-rising universities aged under 30 years.

Times Higher Education World University Rankings 2021: 251-300 in the world, **8th in Mainland China**

**Global Engagement**

**International Faculty, Visiting Scholars and Postdocs:**

- 57** International students from 19 different countries
- 134** Faculty members
- 28** Postdocs
- 25** Visiting Scholars

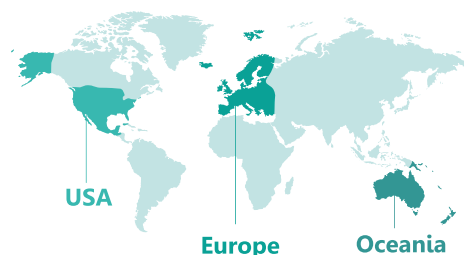
**International Partnerships**

**100+** agreements signed with partner universities

**80+** undergraduate exchange programs

**Exchange Programs**

Funding support available



**Study Abroad and Exchange Partners**



North America: 43    Europe: 15  
Asia: 12    Oceania: 4

**Office of International Students and Scholars**

Newly established office providing holistic support to the small but ever-growing international community at SUSTech:

- Visa and residence permit support
- Orientation and adaptation workshops
- Cultural activities to promote integration of international students and scholars into campus life



**Research Centers and Institutes**

- The Shenzhen Grubbs Institute
- Shenzhen Institute of Quantum Science and Engineering
- Cryo-Electron Microscopy Research and Innovation Centre
- Third Generation Semiconductor Research Institute
- Materials Genome Research Institute
- Materials Characterization and Preparation Center
- Southern Aerospace Research Institute
- Brain Analysis and Brain Simulation Institute
- Institute of Artificial Intelligence
- International Centre for Intelligent Manufacturing Innovation
- Robotics and Automation Research Institute
- Big Data Innovation Center
- Intelligent Unmanned Aerial Vehicle Laboratory
- Deep Earth Exploration Platform
- Sifakis Research Institute of Trustworthy Autonomous Systems

**Contact Us**

Global Engagement Office: +86-755-88018005/88015435

- ✉ intladmissions@sustech.edu.cn
- 🌐 http://infoladmin.sustech.edu.cn/index
- 📘 Facebook: SUSTechSZ
- 📷 Instagram: sustech\_admissions
- 🐦 Twitter: SUSTechSZ
- 📺 YouTube: SUSTech Admissions

## Research Innovation Entrepreneurship



## Collegiate System

Six diverse college cultures aim to help students grow emotionally and socially, while providing them with a full range of extracurricular learning and life activities.



**Residential Colleges**  
Diverse college cultures  
Extensive student activities  
Vibrant cross-discipline conversations

## Undergraduate Education

**1st/2nd year**

General Education undertaken for first 2 years

**Required courses:**

Mathematics, Physics, Chemistry, Biology, Computer Science, English, Arts, Humanities and Social Sciences

**3rd/4th year**

Elective courses  
Major-specific courses  
Graduate designs and research projects

**683** total courses offered in 2017/2018  
**558** Undergraduate  
**125** Postgraduate



Internationalized curriculum matched with world's top universities

English as instructional language for all required courses

Integration of liberal arts and specific STEM courses

Student-centered, problem-based approach to entrepreneurship training and study of innovation

Emphasis on lab practice and internships

Early participation in research supported through faculty advisor system

Lab work and experiential learning form core facets of the SUSTech experience from the 1st year onwards



## Undergraduate Programs

Department	Program
Mathematics	Financial Mathematics
	Applied Mathematics
Statistics and Data Science	Statistics
Physics	Physics
	Applied Physics
Chemistry	Chemistry
Biomedical Engineering	Biomedical Engineering
Biology	Biological Science
	Biotechnology
	Bioinformatics

Department	Program
Electrical and Electronic Engineering	Optoelectronic Information Science and Engineering
	Communications Engineering
	Information Science and Engineering
Materials Science and Engineering	Materials Science and Engineering
Environmental Science and Engineering	Environmental Science and Engineering
	Hydrology and Water Resources Engineering

Department	Program
Computer Science and Engineering	Computer Science and Technology
	Intelligence Science and Technology
Mechanical and Aerospace Engineering	Theoretical and Applied Mechanics
	Aerospace Engineering
Mechanical and Energy Engineering	Robotics Engineering
	Mechanical Engineering
School of Microelectronics	Microelectronics Science and Engineering

## International Student Scholarship

Full scholarship available for international undergraduate students equivalent to **USD9000-10,000** per year.

This covers tuition fees, accommodation, insurance and living expenses during the four years of college study on the condition that satisfactory academic standing is maintained.



©Department of Communication and Public Relations Student News Agency

### Costs for Reference

Tuition	4,600 USD/year*
Dorm	200 USD/year*
Insurance	100 USD/year*
Residence permit	100 USD/year*
Health check	100 USD*
Food, books and miscellaneous	230-300 USD/month
Total	7,900-8,700 USD/year

(Items marked with a \* are all covered by the full scholarship. Monthly stipend of USD400)

## Admission Requirements

- Age 18 or above
- High school diploma and high school transcript
- English proficiency
- 2 recommendation letters
- Academically prepared for rigorous STEM study across Biology, Chemistry, Physics, and Maths in first two years of study

Apply here through our online admissions portal:  
<http://infoadmin.sustech.edu.cn/index>

## Admissions Process

- Submit your application through the online portal
- Upload your supporting documentation
- Pass online tests in Math, Physics, and English
- Complete online interview

### Deadlines

<b>1st Round</b>	31/12/2020
<b>2nd Round</b>	28/02/2021
<b>3rd Round</b>	10/05/2021

## Campus

The SUSTech campus sits on a scenic stretch of land with creeks winding through the lychee tree-lined hills which dot the landscape.

The tranquil, natural environment is complimented by the modern architecture of the university buildings.



## Library

The Lynn library is our iconic, award-winning architectural centrepiece and the hub of student self-learning at SUSTech.

The newly-opened Yi Dan library comprises part of the SUSTech Center, the heart of campus and home to cafeterias, the Student Union, and so much more.



## Sports

On campus, we have state-of-the-art sports facilities, including:

- Olympic size outdoor swimming pool
- 1 full-size and 2 5-a-side football pitches
- 12 basketball courts
- 8 tennis courts
- Indoor badminton and volleyball courts
- Baseball pitch



## Accommodation

Students are housed in our brand-new on-campus dormitories:

- Opened Sept. 2019
- 4 students per room
- Communal spaces on each floor
- Shared bathroom facilities
- Latest security technology employed for student safety
- Views across the lush Tanglang hills



## Food

A variety of on-campus dining options provide a collection of different cuisines from all over China as well as western choices:



## Activities

Campus is a hive of activity year round:

- New Year Concert
- City Tours
- Visits to Makerspaces
- Mid-Autumn Day
- Spring Festival
- Dragon Boat Festival
- International Food Festival
- Full Residential College Sports Program
- Khmer New Year Party
- Language Labs

