



UNIVERSITY OF
LIVERPOOL



A PLACE TO PROGRESS

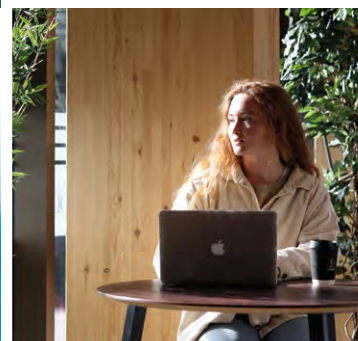
MASTER'S GUIDE

We are the original redbrick
liverpool.ac.uk

Our story began in 1881.
We became one of the first civic
universities. The original redbrick.
Over 140 years later, we're as
original as ever. We're still welcoming
ambitious, talented postgraduates
from all walks of life – helping them
to build brighter futures, with master's
programmes geared towards their
passions and aspirations.
Find your place among them and
start your journey to success.

Contents

Why Liverpool?	02
Choosing your master's course	04
Master's courses that explore culture and heritage	06
Master's courses in Biosciences, Medicine, Nursing and Allied Professions	10
Master's programmes responding to the global impacts of climate change and environmental degradation	14
Master's programmes with your future career in mind	18
Supporting you along your journey and beyond	22
Careers and Employability support	24
Student support services	26
Extra-curricular activities	28
Postgraduate accommodation	30
Alumni community	32
Want to apply? What next?	34
Scholarships and awards	36



Why Liverpool?

A place to start from, be part of, and always come back to

The city of Liverpool is synonymous with culture, heritage, sport, music, and so much more. The University is as diverse as the city we're part of, with a vibrant student community drawn from across the country and around the world. On and off campus, you'll meet people and ideas of every kind. It makes living and learning here a uniquely rich experience. You'll soon realise that there's nowhere quite like Liverpool. And, like our community of 266,000 alumni, you'll be proud to call it 'home'.

liverpool.ac.uk/study/why-liverpool



A place where life-changing research and industry-changing opinions evolve

At the forefront of innovation and discovery, our researchers are advancing knowledge to improve lives. Our interdisciplinary research, unique model for collaborations and cutting-edge facilities, enable us to create global solutions aiming to improve health, create wealth and ensure social justice.

We have globally recognised research strengths in areas including **Advanced Materials, Personalised Health, Infectious Diseases, Digital, Heritage, Starting, living and ageing well,** and **Climate Futures**. Our master's programmes are inspired and driven by this research and you'll learn from inspirational experts who are at the forefront of developments in these, and other, critical areas.

We also work with industry, from micro-SMEs to large global organisations, to create solutions that affect the world around us. In turn these organisations contribute to our teaching, provide real world projects and placements for our students to work on, and employ our graduates.

liverpool.ac.uk/research



A place for all kinds of backgrounds, and every kind of future

We're committed to being a place where people from all walks of life can learn. There is no 'one-size-fits-all' type of University of Liverpool student.

Every year we welcome over 7,000 international students from around the globe to our multi-cultural community. Our mix of nationalities enriches us. We learn from each other, create lifelong friendships and develop new ways of seeing the world.

We're proud to support our students, through a range of innovative support and guidance, and we're equally proud of our record in helping our students to succeed while they are here and in their future careers.



A place to progress

Our master's programmes can help you to specialise in the subject you're passionate about, move in to a new field, or gain the qualifications and skills needed for your chosen career. But, more importantly, we can help you stand out from the crowd and achieve your aspirations.

liverpool.ac.uk/study/postgraduate-taught/



**LIVERPOOL VOTED
SECOND FRIENDLIEST
UK CITY IN THE 2021
CONDE NAST
TRAVELLER READERS'
CHOICE AWARD.**

Choosing your master's course

We offer a diverse range of master's programmes across our three Faculties that are powered by cutting-edge research.

Most of the master's programmes can be studied full-time over 12 months, which is ideal if you're an undergraduate progressing straight on to a master's programme or an international student coming to the UK to study. If you have other commitments that you need to fit your studies around, most of our programmes can be studied part-time over two years too.

For people who are in employment and trying to fit master's study into their busy lifestyles, a number of our master's programmes can be studied on a flexible basis as CPD modules, as a PG Certificate or a PG Diploma; allowing you to progress to the full master's programme at your own pace.

Alternatively, you can join the many students who are studying one of our postgraduate qualifications online.

Many of our programmes now include internships, are professionally accredited, and benefit from guest speakers from industry – all of which enhance your experience and prospects.

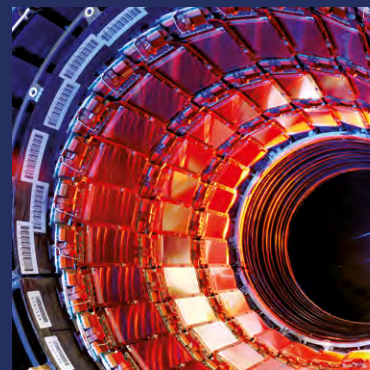
Undergraduate Medical, Dentistry and Veterinary Sciences students can also study a number of our master's courses during their intercalation year.

Look out for the following symbols when you're browsing our master's programmes online.

-  **Professionally accredited**
-  **Internships available**
-  **Modules available as CPD**
-  **Intercalation option**



Looking for inspiration?
Explore our master's courses by subject liverpool.ac.uk/study/subjects/



Master's courses that explore culture and heritage

Warm and welcoming, characterful and full of characters, there's nowhere quite like Liverpool. It's home to 445,000 people and one unique spirit.

Liverpool's influence shapes the world through its art, music, sport and culture, and with more galleries and museums than any other UK city apart from London, the city's entrepreneurial and creative spirit is fuelling a boom in business start-ups. Many global businesses also make the city their home.

The city's influence is reflected in the master's programmes we offer. Designed for 21st century social scientists, our courses explore Liverpool's past, and how our history is shaping the future.

From **International Slavery Studies** to **The Beatles: Music Industry and Heritage**, from **Art, Philosophy and Cultural Institutions** to **Sustainable Heritage Management**, take a look at our master's programmes that celebrate and take influence from Liverpool's culture and heritage.



liverpool.ac.uk/study/postgraduate-taught/courses/masters-programmes/explore-culture-and-heritage/

Steve Bradley

The Beatles: Music Industry and Heritage MA



Liverpool is a very friendly place with a blend of cultures and a fascinating history. There are few cities worldwide that are better suited to the study of music history than this UNESCO City of Music.



Read more about Steve's experience.



SPOTLIGHT ON RESEARCH:

We believe a better understanding of the past helps create a more prosperous, fairer and healthier world for everyone.

Our unique cross-fertilisation of research from the humanities and sciences across areas such as archaeology, architecture and sociology means we can use the lessons from history to solve the problems of today.

Through traditional archival and oral histories, as well as cutting-edge archaeological research, our academics are extending the boundaries of existing knowledge and redefining what we understand by 'heritage'.

Our use of digital tools and archives is broadening research of, and engagement with, a range of subjects across the humanities and sciences.

We partner with regional organisations to help shape public policy, education and sustainable tourism strategies across Liverpool and beyond.

Discover more about our research in heritage at liverpool.ac.uk/research/research-themes/heritage/

WE ARE INDIVIDUAL PERSPECTIVES AND SHARED PRIDE. CULTURES THAT MIX, AND IDEAS THAT CHANGE SOCIETY. STUDY WITH US, AND BELONG.

SPOTLIGHT FEATURE:

Making the world's greatest music accessible to all.

Music is an important focus for the University of Liverpool. This is reflected in our commitment to making the world's greatest music accessible to all. The University of Liverpool's new Yoko Ono Lennon Centre, opened in 2021, houses The Tung Auditorium a 400-seat space with capacity for a 70-piece orchestra, as well as the state-of-the-art 600-seat Paul Brett Lecture Theatre, offering students a world-class teaching experience. The Centre has been named after Yoko Ono Lennon (Hon LLD 2001) in recognition of her long-standing philanthropic support to the University and its students.

In 1991 Yoko established the John Lennon Memorial Scholarship in memory of her husband to support students from Merseyside in financial need and who raise awareness of global and environmental issues as part of their studies.

Yoko said: *"Liverpool was beautiful to my eyes. It had a kind of poetry, style and vigour that I loved. It was also the first place John took me to after we got together. He was proud of the city he was born and grew up in. Liverpool has become part of me by years of going there, and with this new centre part of me will always be there – for that I'm very thankful. I think John is smiling about it too."*

As well as bearing her name, the Centre will seek to celebrate the artistic vision and cultural significance of Yoko Ono Lennon. liverpool.ac.uk/yoko/



Master's courses in Biosciences, Medicine, Nursing and Allied Professions

Liverpool is unique within the Higher Education ecosystem globally, in hosting medical, veterinary, public health, tropical medicine and behavioural science schools and institutes. Liverpool has an unrivalled breadth of world-leading clinical and Health and Life Sciences academic expertise.

Our master's courses span this breadth too. We have developed a portfolio of new programmes to develop the skills and knowledge of practising healthcare professionals, and to enable graduates from a range of subject disciplines to enter the sector through our pre-registration and conversion programmes.

From **Bioinformatics to Cancer Care** and from **Global Healthcare Ethics to Health Data Science**, take a look at the full list of master's courses designed to empower the current and next generation of scientists, doctors and healthcare professionals.



liverpool.ac.uk/study/postgraduate-taught/courses/masters-programmes/biosciences-medicine-nursing-and-allied-professions/



Praleena Mohan

Investigative
and Forensic
Psychology MSc



Undertaking this master's course takes me one step closer to becoming a Forensic Psychologist, and since this course provides the practical application of everything you learn, it opens up more opportunities in the real world.



Read more about
Praleena's experience.



SPOTLIGHT ON RESEARCH:

We aspire to positively impact the health and wellbeing of our city, our country and our planet.

Our extensive expertise and pioneering track record in infectious diseases research puts us at the forefront of tackling global health problems.

WE ARE LIFE-CHANGING RESEARCH AND INDUSTRY CHANGING OPINIONS. THE SEARCH FOR THE UNKNOWN AND THE DISCOVERY OF THE NEW. STUDY WITH US, AND CREATE SOMETHING FOR YOURSELF.

Our world leading personalised health research is paving the way for the unique treatment of individuals based on their genetics and other health data. And, our three world-class Faculties have joined forces to improve the health and wellbeing of babies and children, and the adults they'll become. Find out more about our research in health and life sciences at liverpool.ac.uk/research/research-themes/



SPOTLIGHT FEATURE:

Home to the world leading 'end-to-end' Pandemic Institute.

Liverpool is the headquarters of the new Pandemic Institute, committed to helping the world prevent, prepare, and respond more effectively to pandemics. The Pandemic Institute is a medical, academic and civic partnership between the University of Liverpool, Liverpool John Moores University, Liverpool School of Tropical Medicine, Liverpool University Teaching Hospital NHS Foundation Trust, Liverpool City Council, Liverpool City Region Combined Authority and Knowledge Quarter Liverpool (KQ Liverpool). In response to the Covid-19 pandemic, Liverpool has pioneered innovative approaches including a whole city community testing pilot which cut

transmission rates by a fifth, as well as hosting large-scale pilot events on behalf of the Government that provided evidence of how to safely reopen important sectors of the economy – developing Liverpool's reputation as a leader in pandemic management and resilience.

The Pandemic Institute offers world-leading clinical and research expertise across all stages of the pandemic lifecycle. It has a global reach, working across the world to deliver new science and build preparedness for future pandemics. The outputs of its work is being rapidly translated into tangible policy, solutions and activity, ensuring real world impact for governments, businesses and individuals across the globe. thepandemicinstitute.org



Master's programmes responding to the global impacts of climate change and environmental degradation

At Liverpool we are committed to improving the world we live in and are tackling the impact of climate change; one of the greatest threats to public health, the global economy and biodiversity.



To help address the climate change crisis, we are harnessing our high-quality research expertise spanning climate science, emissions reduction, food sustainability, air quality impacts, new materials discovery, behaviour insights, risk communication, community engagement and the development of new sustainable technologies. Working with collaborators across the globe, we are aligning these strengths to explore impacts of climate change, develop solutions to environmental challenges and address knowledge gaps.

Our master's programmes in this area include **Climate Resilience and Environmental Sustainability in Architecture (CRESTA)**, **Environment and Climate Change, Environmental Assessment and Management** and **Sustainable Food Systems**.



liverpool.ac.uk/study/postgraduate-taught/courses/masters-programmes/climate/

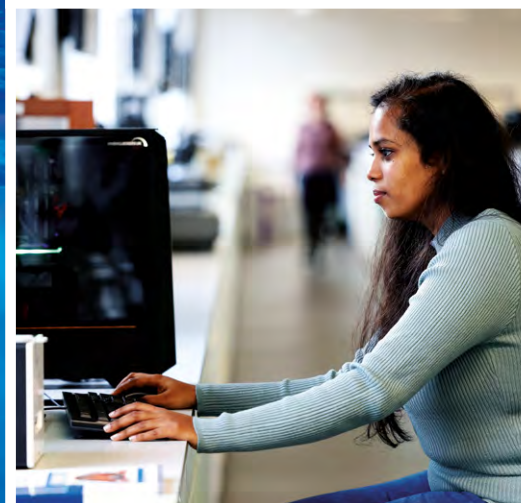
Mwale Mutale
Environmental Assessment and Management MSc (Part-time)



It is really inspiring to be taught by academic staff who have such an in-depth knowledge of their specialisms and who integrate current affairs and publications into their teaching. This makes the course more engaging and keeps the content relevant as well as relatable to practical application in the real world.



Read more about **Mwale's** experience.



SPOTLIGHT ON RESEARCH:

Centre of Excellence for Sustainable Food Systems.

The Centre is made up of a multidisciplinary team of experts spanning the fields of health and life sciences, environmental sciences, and policy and management research to bring together knowledge of biological, management, behavioral, and climate sciences to improve health and the environment.

Research in the Centre covers the breadth of food systems research, from crop to animal science to supply chain management and food consumption.

One of our key research areas is to use the latest scientific research to inform farmers, growers and supply chains about risks to their current production methods, crop species grown and animals raised, and provide advice on current and future impacts on water supply, temperature ranges and disease risks.

liverpool.ac.uk/research/research-themes/climate-futures/



SPOTLIGHT FEATURE:

Liverpool at COP26.

The COP26 summit brought parties together to accelerate action towards the goals of the Paris Agreement and the UN Framework Convention on Climate Change.

We worked with 80 UK universities and research institutes to ensure that UK research informed COP26 and we continue to do this post conference.

Explore our research and expert viewpoints which are helping to inform the negotiations and future policy.

liverpool.ac.uk/feature/cop26/

WE ARE PROJECTS THAT MAKE HEADLINES AND DISCOVERIES THAT MAKE HISTORY. SHARED SUCCESSES AND PERSONAL JOURNEYS. STUDY WITH US AND CHANGE YOUR OWN WORLD.



Master's programmes with your future career in mind

We understand that whatever and however you choose to study at Liverpool, your motivations are about building a brighter future for you.

Xueping Yang

Data Science and Artificial Intelligence MSc



My undergraduate degree is in Telecommunication Engineering. After working for two years, I decided I wanted to change my career and this master's degree has helped me to successfully find a job related to software engineering in the UK.



Read more about Xueping's experience.

Conversion courses

Whilst all of our master's programmes will help you with your career development, we have a number of courses that are geared towards people who want to change career direction or enter vocational fields. These include 'conversion' programmes that you can study regardless of your undergraduate degree subject. Ranging from **Psychology** to **Data Science and Artificial Intelligence**, and from **Mental Health Nursing** to **Marketing**, these courses can open up new and exciting career opportunities.



liverpool.ac.uk/study/postgraduate-taught/courses/masters-programmes/conversion-courses/

IN 2020, 78% OF
POSTGRADUATES
IN THE UK WERE FOUND
TO BE IN HIGHER SKILLED
JOBS COMPARED TO
66% OF GRADUATES*

*Department for Education: Graduate Labour Market Statistics 2020.

Programmes in Data

The University is at the forefront of new technologies and trends that are affecting the world around us. We constantly develop our portfolio of master's courses to meet the skills gap that employers are looking for in these areas. Data is just one example of this. Organisations are increasingly collecting and using larger amounts of data to find patterns and help solve their business challenges.

As a result, the demand for staff with the right combination of technical, analytical and communication skills to work with data is high.

To meet these business needs, we offer a selection of programmes that develop data scientists able to work across sectors from health, finance, scientific research and IT to communication and media.

Discover more about our career changing and enhancing programmes that will equip you with the skills that employers are looking for.



liverpool.ac.uk/study/postgraduate-taught/courses/masters-programmes/data-science/





SPOTLIGHT ON RESEARCH:

From transforming medical surgery with VR to managing population change with big data, our digital research is transforming society and industry through the generation, communication and processing of data.

Our digital expertise underpins discovery and applications across the sciences and humanities at the University, by improving research and analysis techniques and broadening research and innovation possibilities.

From developing a fully autonomous mobile robot chemist to leading new research into our digital lives through devising a minimum acceptable digital living standard (MDLS) for households with children across the UK, we are tackling some of the world's greatest challenges and helping to deliver better health, social justice and industrial competitiveness.

Find out more at liverpool.ac.uk/research/research-themes/digital/

**WE ARE IDEAS THAT INSPIRE,
AND A CULTURE THAT MOVES.
MINDS THAT NEVER REST, IN
A CITY THAT NEVER SLEEPS.
STUDY WITH US, AND GET
IMMERSED.**

SPOTLIGHT FEATURE:

Artificial intelligence can help people with law, democracy and policy making.

When we think of artificial intelligence (AI), images of sci-fi films, sentient machines and alternative realities usually come to mind. But, there is a much more human side to AI, one that experts at the University of Liverpool are harnessing to bring new tools to support decision making in justice, e-democracy and policy making.

So how do the cold mathematical algorithms of AI translate into positive benefits for people?

At Liverpool, it starts with an emerging field called computational models of argument (CMA), where debates are broken down argument by argument. *"Humans use argumentation to debate and discuss in order to decide what to do,"* says Professor Katie Atkinson, Dean of the School of Electrical Engineering, Electronics and Computer Science.

"In CMA we are looking at formal models that can be turned into computer programs for automated argumentation."

With highly effective working models, Atkinson is now working with top UK law firm Weightmans to see how the work can be implemented in an industrial setting.

For industry clients, the models could be used as business tools to advise on decisions, measure consistency in decision making and speed up case processing, as well as highlight problematic areas that require extra work, or probe whether to take on a case at all.

The University of Liverpool has been heavily involved with the field of AI and law - dating back to a 1987 conference in Boston, US - long before the recent boom in the field. As a result, Liverpool's reputation in the area is extremely strong, and the University is known internationally for research in the area.

Find out more at liverpool.ac.uk/research/research-themes/digital/artificial-intelligence-in-law/



Supporting you along your journey and beyond

You'll be welcomed into our student community long before your master's programme even starts. We offer a suite of support prior to you joining us via virtual events, videos, podcasts and vlogs. This support continues whilst you're studying with us and as you progress to becoming a LivUni graduate.

English language support

The English Language Centre (ELC) is the University's specialist English language facility for international students. If you need to improve your English before you start your master's programme we offer specially designed Pre-sessional courses ranging from short intensive courses to all year round study.

We also provide a free comprehensive programme of In-sessional English support to run alongside your master's programme. These programmes can be discipline specific, focusing on relevant language used in particular subject areas, or general academic English suitable for all international students.

The ELC is also a registered IELTS testing centre running over 20 tests a year and provides IELTS training year round. For more information, visit liverpool.ac.uk/english-language-centre



The combination of well-designed materials and exercises at the ELC really helped me to develop and improve. Without this course I would have found it very hard to undertake my postgraduate studies and research. I always recommend it to my friends.

Waleed

Saudi Arabia, 40 week
Pre-sessional course



Careers and Employability support

Sourav Das

Business Analytics and Big Data MSc



Learn how MSc Business Analytics and Big Data graduate, Sourav Das, landed his dream role as a Software Engineer for Lusion Payments in Paris, France.



Read more about Sourav's experience.

Employability embedded in to your master's programme

We use our links with industry and employer partnerships to provide authentic real-world experiences in the curriculum.

For example, take a look at our 'We can work it out' Master's Consultancy Challenge where students from the Management School worked on a problem posed by global brand, Unilever. liverpool.ac.uk/management/study/postgraduate-taught/careers

The UK's first peer-to-peer employability space

At the heart of our careers support is the Career Studio. This is a space led by students, for students, empowered by career experts. Whether you have your heart set on a particular career, or don't know where to start, our dedicated and highly trained Career Coaches are here to guide you. From exploring different career options, to connecting with employers, to applying, we'll help you to move along the career journey.

Try the latest digital tools and technologies

From virtual work-based experiences to practice video interviews using artificial intelligence (AI), we ensure our students have access to new and emerging technologies to give them an edge when applying for increasingly competitive graduate opportunities.

Dedicated Employer Connections Team

We work in partnership with top graduate recruiters, locally, nationally and globally to ensure the best opportunities are available to students and graduates. Whether that's finding a part-time job, internship, placement or volunteering opportunity while you study, or securing a graduate role or chance to gain experience of working in the UK once you've completed your master's.

Your Future

We're here for you even after you graduate, right through your early career. To help you stay ahead and unlock your full potential we have developed a new online experience our graduates, called Your Future.

The Your Future experience is designed to help you navigate career paths, gain skills and experience, and get the job you deserve. It's a new way for you to access quick support and find exclusive career opportunities in Liverpool, the UK, and beyond.

Explore this and so much more at liverpool.ac.uk/careers



Student support services

Whatever your circumstances, we have the support network in place to help you get the most out of your studies and time at university. From mental health and counselling, to disability support, to money advice, there is a team here dedicated to supporting you. liverpool.ac.uk/studentsupport/



Learning Resources

The University libraries

- The two University libraries are usually open 24/7 throughout the academic year providing access to books, computers, study spaces and Library support
- Our library collections include the reading list items you'll need for your studies, either in print – we have over 2 million print books – or online via our extensive collections of eBooks and eJournals, all available 24/7. Students can also suggest that the Library purchases additional books using our Get it For Me service
- The breadth of our collections enables you to research beyond your reading list, to develop your knowledge and expertise. Each subject has a dedicated Liaison Librarian, who provides specialist support and advice to help you make the most of the Library resources to support your studies
- KnowHow is a Library service designed to help you develop your academic skills and excel in your studies. The KnowHow team offer online and face-to-face workshops and resources to help with essay planning, preparing for exams, referencing, and managing your time when studying. You can attend as many sessions as you like throughout your time at University
- Depending on how you prefer to study, the Library has zoned workspaces for silent, quiet and group work. To take a break from studying, you can grab a drink in the Library café or catch up with friends in the Library social areas. We also have designated postgraduate study spaces.

liverpool.ac.uk/library

[@LivUniLibrary](https://twitter.com/LivUniLibrary)

IT services

- 24/7 service desk – including a self-service portal – to help with any IT issue or query
- Secure file space to save your work throughout your studies
- Over 2,000 computers are available to use on campus and remotely
- High-speed Wifi available for laptops, tablets and mobiles
- Hundreds of knowledge articles to help you solve an IT problem
- Free software to install on your own computer, including the latest versions of Microsoft Office and specialist software such as SPSS and Matlab
- Free mobile apps that let you access your timetables and coursework wherever you are
- Two-factor authentication to keep your information secure
- Microsoft Teams and Zoom for online learning and collaboration
- Activate your account when your place is confirmed to access University email and IT resources before you start the academic year.

liverpool.ac.uk/csd

[@liverpoolcsd](https://twitter.com/liverpoolcsd)

Extra-curricular activities

We encourage all our students to get involved in activities that will enhance your student experience as well as your career prospects.

Open Languages

As a master's student you have the opportunity to learn a new language and open up your world even further through our Open Languages modules. Graduates who speak another language are in high demand in roles that extend well beyond interpretation and translation to encompass all elements of business transaction, international cooperation and politics. As a postgraduate student you can study language modules in French, German, Chinese (Mandarin), Italian, Spanish, Portuguese, Basque or Catalan as an extra-curricular option.

liverpool.ac.uk/languages

Continuing Education

Continuing Education provides short courses, lectures, and events during the academic year. Our flexible start times mean you can easily fit a Continuing Education course in around your study.

liverpool.ac.uk/continuing-education

Sport Liverpool

Whether you take part in organised activities or independent exercise, our sports services provide a great way to meet people, get connected and achieve a level of fitness and general wellbeing that can help you with the other, more demanding aspects of University life.

liverpool.ac.uk/sports

Liverpool Guild of Students

As soon as you join the University of Liverpool, you automatically become a member of the Liverpool Guild of Students and from your first day as a student and throughout your university years, the Guild will make sure you enjoy your time at Liverpool. You can also become a member of the Postgrad Society – run by postgraduates for postgraduates, the society aims to nurture an environment where students can feel both supported and encouraged in order to increase postgraduate wellbeing and engagement across the University.

liverpoolguild.org

Priya Ranita Crasta

Master in
Management
MIM



University is the perfect opportunity to try out new things – new sports or societies, unknown modules or specialisms in your chosen subject, or different roles and responsibilities in a project or team.



Read more about
Priya's experience.



Postgraduate accommodation

There are some great University accommodation options for our postgraduate students at various locations across the campus and city. With room types ranging from single rooms to self-contained studio apartments, we have ensuite, shared bathroom, shared kitchen and studio options available for you to choose from, with a range of prices to suit every budget.



All of our on-campus halls (with the exception of Melville Grove) are available for postgraduate students. If you chose a room with a shared kitchen, we guarantee that you will live with other postgraduates. We are also delighted to offer a discounted accommodation fee for postgraduate students, as part of a 51 week student licence. liverpool.ac.uk/accommodation/find-accommodation/postgraduate-accommodation/

How to apply

You can apply for accommodation as soon as you receive your offer to study with us. Once we have received your application and your status at the University of Liverpool is confirmed as an expected entrant, we will send you an offer for accommodation. We are able to offer accommodation to most postgraduate applicants

International postgraduate students are guaranteed accommodation with us, so long as you apply no later than 31st July. If you apply after this date, we will do our best to secure you good quality accommodation, either in our halls or with one of our preferred providers.

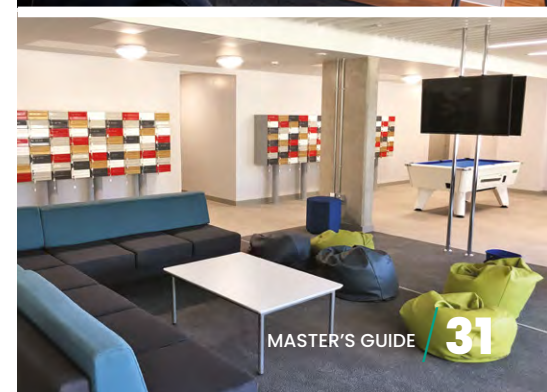
Become a Residential Adviser

Residential Advisers are postgraduate or mature students who live in our halls and provide overnight pastoral support for other students. We provide you with the necessary training and you will have 24/7 back-up from our professional student support teams. In return, we can offer you free accommodation as well as the opportunity to gain some valuable experience to benefit your future career. liverpool.ac.uk/accommodation/life-at-halls/residential-adviser/

Privately rented accommodation

Liverpool is a large city with a wide variety of rented accommodation available. Type and standard of accommodation in Liverpool varies considerably – and so does the cost. If possible, you should come to Liverpool a few weeks before your programme starts to look for a suitable place.

For information regarding private housing in Liverpool visit Liverpool Student Homes at liverpoolstudenthomes.org



Alumni community

Globally connected for life

Your journey and relationship with the University doesn't end once you graduate; quite the opposite! As a University of Liverpool graduate you will have access to a wide range of benefits and services including event invitations and our professional interest networks which offer professional development support. With more than 280,000 graduates located all over the world, the University of Liverpool boasts a thriving alumni community which will be invaluable throughout your university journey and beyond.

As a graduate you can:

CONNECT with alumni around the world by joining one of our professional, academic, and social networks or by attending one of our many events.

LEARN new skills through discounted CPD study, free online journal access, and webinars.

Dr Jaclyn Bell

BSc (Hons) Mathematics 2010,
MA Mathematical Sciences 2011,
PhD 2016



DEVELOP your career by joining our new global eNetworking platform, Liverpool Connect, created exclusively for University of Liverpool alumni.

Liverpool Connect

Through Liverpool Connect you can benefit from the insight of our alumni community by networking and sharing professional experience. This online space allows you to network with other current students and graduates and share 'insider' information on job roles and career areas. If you're looking for a contact in a particular industry or sector, or thinking of changing careers, our online eNetworking platform lists the details of many University of Liverpool alumni, locally, nationally and internationally, so that you can find the contact you need to advance your career or develop your business. We are enormously proud of our global alumni family and are confident that your University of Liverpool degree will be of great benefit throughout your career. liverpool.ac.uk/alumni

At University, meeting people from all over the world and from cultures I'd never been exposed to before made me think. I only knew home, school and becoming a teacher – the jobs I saw everyday. University opened up so many different opportunities to me. My little tiny world became a massive world.



Read more about
Jaclyn's experience.



Want to apply? What next?

Check your eligibility

For entry on to our master's programmes, you will normally need a First Class or 2:1 Honours degree in a relevant subject or the international equivalent (as recognised by the National Recognition Information Centre (NARIC) or the University's international recruitment office).

All applicants must have reached a minimum required standard of English language and are required to provide evidence of this.

Qualifications accepted by the University can be found online.

liverpool.ac.uk/international

Some programmes may have additional or specific entry requirements, so please check the master's programme you are interested in before submitting your application.

Not eligible, but still want to join us?

If you hold a bachelor's degree or equivalent, but don't meet the entry requirements for a master's degree at Liverpool, a pre-master's can help you gain a place. The pre-master's pathways, delivered by our partner, University of Liverpool International College, fall into three categories; Business, Economics and Finance, Law and Social Sciences or Science and Engineering. The length of your pre-master's programme depends on your English language level (UKVI IELTS score or accepted equivalent), but we have flexible start dates throughout the year to suit your circumstances.

The pre-master's programmes are conveniently taught on campus in Liverpool in a brand new, state of the art building with integrated accommodation.

kaplanpathways.com/colleges/university-of-liverpool-international-college/courses/

Apply online

Once you have chosen your master's programme(s) and checked your eligibility, you should apply via our online application system, Apply Yourself. liverpool.ac.uk/study/postgraduate-taught/applying

Firstly, you will need to create an Apply Yourself account. Then, it takes about 30 minutes to complete your application. You'll be required to submit your:

- University/degree transcripts and certificates
- Evidence of English language ability (International/EU applicants only; visit our website for details)
- A personal statement explaining why you want to undertake the programme and why you feel you are a suitable candidate.

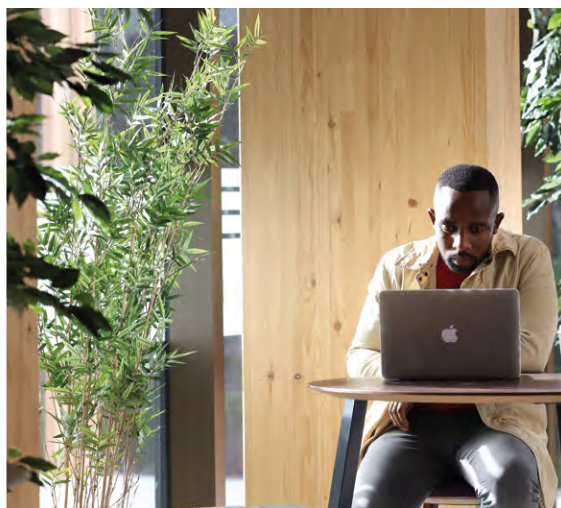
You don't have to apply in one sitting. You can save your application as you go and revisit it at a time convenient for you. However, we do suggest applying as soon as possible to avoid disappointment and always check to see if the course you're applying for has a specific deadline.

Fee deposits

The University operates a fee deposit scheme for all international master's students. For more information, visit liverpool.ac.uk/study/international/tuition-fees-and-scholarships/fee-deposits/


Deadlines

We encourage all students to apply for their chosen programme as soon as possible. Some programmes may close early due to high volumes of applications and/or have early deadlines. If this is the case, it will be detailed on the applying section of the course webpage. For programmes starting in September, international students who require a visa to study in the UK should apply no later than 31 July of the year they wish to commence their studies (although this may be brought forward to June due to demand for courses). UK students should apply no later than 31 August. There are a small number of programmes which have January start dates. The application process for these programmes is open until 31 October prior to the programme start date, unless stated otherwise on the course webpage.



Scholarships and awards

We offer a range of generous scholarships and awards for UK and international students.

Whilst some scholarships and awards are automatically awarded to eligible students, others require you to apply and have an application deadline. So, if you do require financial support, we suggest that you start to research how you're going to fund your master's programme at least 12 months in advance of your start date. Look out for the following symbol  for details of scholarships on our course webpages.

Below are details of just a few of our key scholarships and awards.

Postgraduate Progression Awards

If you're a current University of Liverpool undergraduate or alumni, including Global Opportunities, Exchange students, intercalating students and students from Xi'an Jiaotong-Liverpool University, progressing to either full or part-time postgraduate taught study you're eligible to receive one of our Postgraduate Progression Awards – a reduction in tuition fees ranging from £1,000 to £3,000 depending on which award you qualify for. liverpool.ac.uk/progress

Vice-Chancellor's Attainment Award

The Vice-Chancellor's International Attainment Scholarship (PGT) rewards high-achieving international students (including students from the EU) starting a postgraduate taught master's programme with a £2,500 reduction in tuition fees.

Management School Scholarships and Study Awards

Our triple accredited Management School offers a generous range of scholarships to help cover the cost of your master's programme. These include partial fee waivers for 'future leaders' and high achieving students from the UK and across the world. liverpool.ac.uk/management/study/postgraduate-taught/scholarships

Details of all our scholarships and awards can be found online. liverpool.ac.uk/study/postgraduate-taught/finance/scholarships

Please note all information was correct at time of print (September 2022), but may be subject to change. For the latest information, please visit liverpool.ac.uk/study/postgraduate-taught



Get to know us

Go online liverpool.ac.uk

Sign up for updates and event notifications
liverpool.ac.uk/study/postgraduate-taught/keep-in-touch/

Explore our subject pages
liverpool.ac.uk/study/subjects

Chat with our students
liverpool.ac.uk/study/chat/

Connect with
#TeamLivUni on social

 [UniversityofLiverpool](https://www.facebook.com/UniversityofLiverpool)

 [UofLTube](https://www.youtube.com/UofLTube)

 [@livuni](https://twitter.com/livuni)

 [@liverpooluni](https://www.instagram.com/liverpooluni)

THE ORIGINAL

REDBRICK