



Australian
National
University

Make your world – and ours

Welcome to ANU from all
corners of the earth.

Choosing to study an internationally recognised postgraduate degree at the Australian National University will help you drive your career further – or kick-start a new one – while propelling the world forward.

Our enriching courses are driven by the latest research and will see you diving deeply into your disciplines. By connecting you with opportunities to network and apply your learning in industry, research and community settings, we'll equip you to make a difference to your life and that of people in global communities around you.

Take your next step at ANU, in the heart of Australia's national capital, Canberra.

The Australian National University (ANU) acknowledges, celebrates and pays respect to the Ngambri and Ngunnawal people of the Canberra region and to all First Nations Australians on whose traditional lands we live, meet and work.



#1 university in Australia¹

#1 most international university²

#1 most employable graduates in Australia³

5 stars for student to staff ratio and staff qualifications⁴

17,000+ students from
100 countries around the world

6,490 beds on campus, including a guaranteed accommodation offer for students starting their studies in 2024

6 Nobel laureates among ANU staff and alumni

The Australian National University (ANU) is a member of Group of Eight Australia and the only Australian member of the International Alliance of Research Universities.

CRICOS Provider Number: 00120C
TEQSA Provider ID: PRV12002
(Australian University)

This student guide was published by the ANU International Strategy and Future Students Division on 23 June 2023. Information in it was current at the time of publication.

1. QS World University Rankings 2023
2. Times Higher Education Rankings 2023
3. Times Higher Education Rankings 2022
4. 11:1, Good Universities Guide 2023



Contents

Going boldly where none have gone before	2
Canberra	4
The ANU learning experience	6
Grow your network	8
Support for your success	10
Campus and accommodation	12
ANU degrees	14
Student stories	19
Research opportunities	20
Financing your degree	24
How to apply	26

5 reasons why ANU is for you

1

Australia's #1 university¹

Tackling complex problems with the global experts who write the textbooks is part of a normal day at ANU. Our courses, taught by leaders in their fields, are driven by research that ranks above world standard. As a trusted intellectual powerhouse, we also offer opportunities unique to a national capital, including access to government decision makers and industry internships.

2

Small, interactive classes taught by world-leading academics

Connecting with your talented lecturers, tutors and classmates – and amazing resources – is easy. Our student-teacher ratios are among the best in Australian universities and our learning facilities are second to none.

3

Flexible, internationally recognised degrees

Choose from 160 study options. ANU offers six-month short courses (graduate certificates), graduate diplomas and master's degrees, as well as unique research programs. You can even create a flexible double master's degree here. Our rewarding study experiences build graduates with the expertise and resilience that employers look for around the world.

4

Everything in one place

Our campus has everything you need to fit extra study around your life – from childcare, supermarkets, textbooks and stationery to 24-hour libraries, a gym, doctor's surgery and great coffee. Need something else? Canberra's CBD is just a few minutes' walk or bike ride away.

5

Welcoming city and supportive community

With students coming from all over the world, Canberra is a welcoming city. We guarantee you a room within an ANU or other approved student residence and a supportive campus community that can help you discover the city – and embrace this next chapter of your life.

Going boldly where none have gone before

Seven years after taking on the top job at ANU, world-renowned astrophysicist Brian Schmidt reflects on winning the Nobel Prize and the challenges of shaping a national university.



ANU Vice-Chancellor, Professor Brian Schmidt
AC, FRS, FAA

When fictional USS Enterprise commander Captain James T. Kirk declared his starship's mission was to explore the mysterious outer reaches of space – to “boldly go where no [one] has gone before” – he may well have benefitted from having an enthusiastic 27-year-old PhD graduate by the name of Brian Schmidt on board.

Brian – who in 1998 made a startling discovery that turned conventional wisdom about the universe on its head – is nothing if not persistent when it comes to scientific discovery.

“There are not many [universities] that would allow a 27-year-old post doc to do this huge experiment and give them the resources and the freedom to do it. That was what really made [the Nobel Prize] happen.”

While he was a postdoctoral researcher at the University's Mount Stromlo Observatory, Brian discovered the universe is expanding at an accelerating rate, not contracting as previously understood, and that more than 70 per cent of its mass is made up of a dark energy nobody knew existed.

The extraordinary finding was named discovery of the year by *Science* magazine and earned him the 2011 Nobel Prize in Physics.

It's surprising, then, that the man who counts a highly successful seven-year stint as ANU vice-chancellor among his myriad career achievements almost wasn't accepted into the university that has undergone an incredible transformation under his leadership.

In 1995 the Montana-born science-lover, with undergraduate degrees in astronomy and physics from the University of Arizona and a PhD from Harvard under his belt, arrived in

Canberra with his Australian wife Jennifer Gordon seeking work.

While economist Jennifer received six job offers almost immediately, Brian found it more difficult to catch a break. “Mount Stromlo Observatory at ANU is one of the best places in the world to do astronomy so that was a great job for me, but it took me four attempts [to get in],” he says.

“Yes, I had just done my PhD at Harvard but that doesn't mean you get a free pass to come to ANU. I was in an international selection three times. It was a very strong field.”

On his fourth attempt he cracked it by pitching his ambitious idea for the experiment that would ultimately lead to his discovery of cosmic acceleration.

“Jeremy Mould, who was director at Mount Stromlo at the time, knew [my idea] was a little crazy but it was bold, and he gave me a job and the resources I needed to run a global team,” he says.

“There are not many [universities] that would allow a 27-year-old post doc to do this huge experiment and give them the resources and the freedom to do it. That was what really made [the Nobel Prize] happen. And I had great colleagues at Mount Stromlo

who provided the support, guidance and mentoring that's an important part of things too."

The breakthrough, he explains, means that as the expansion of the universe continues at pace, we will see less and less of it over time. "Parts of the universe we can see today we won't be able to see tomorrow. They will literally disappear," he says.

Known today as Professor Brian Schmidt AC, FRS, FAA, he describes the aftermath of his discovery as "a wild ride".

"You publish, as one does, and you wait and see if someone is going to go, 'Oh you guys screwed up'. But after a couple of weeks [with no negative feedback] you go, okay, interesting..." he says.

When a separate ground-breaking study led by American astrophysicist Saul Perlmutter (jointly awarded the Nobel Prize in 2011) corroborated the findings of Brian's team, any further doubt evaporated.

As a kid, Brian was interested in astronomy. "I knew I would enjoy it because it would teach me physics, engineering, coding, mathematics and more, and these would all be very useful skills to get a job. I was absolutely right about that."

He insists that the key to a rewarding career is to do something you enjoy and not to prejudge whether you'll be successful until you give it a try.

"There are lots of things you can do in life, not just one thing. I could easily have ended up in the tech boom of the early nineties doing computer programming or engineering if I hadn't stayed in academia."

Brian says the work he has done since his 2016 appointment as vice-chancellor of ANU comes close to winning a Nobel Prize in terms of job satisfaction.

Under his leadership, ANU has attracted more Australian students than ever before, transformed its campus with new facilities and residences, and seen scholars win major national and international prizes despite the unprecedented challenges presented by the COVID-19 pandemic.

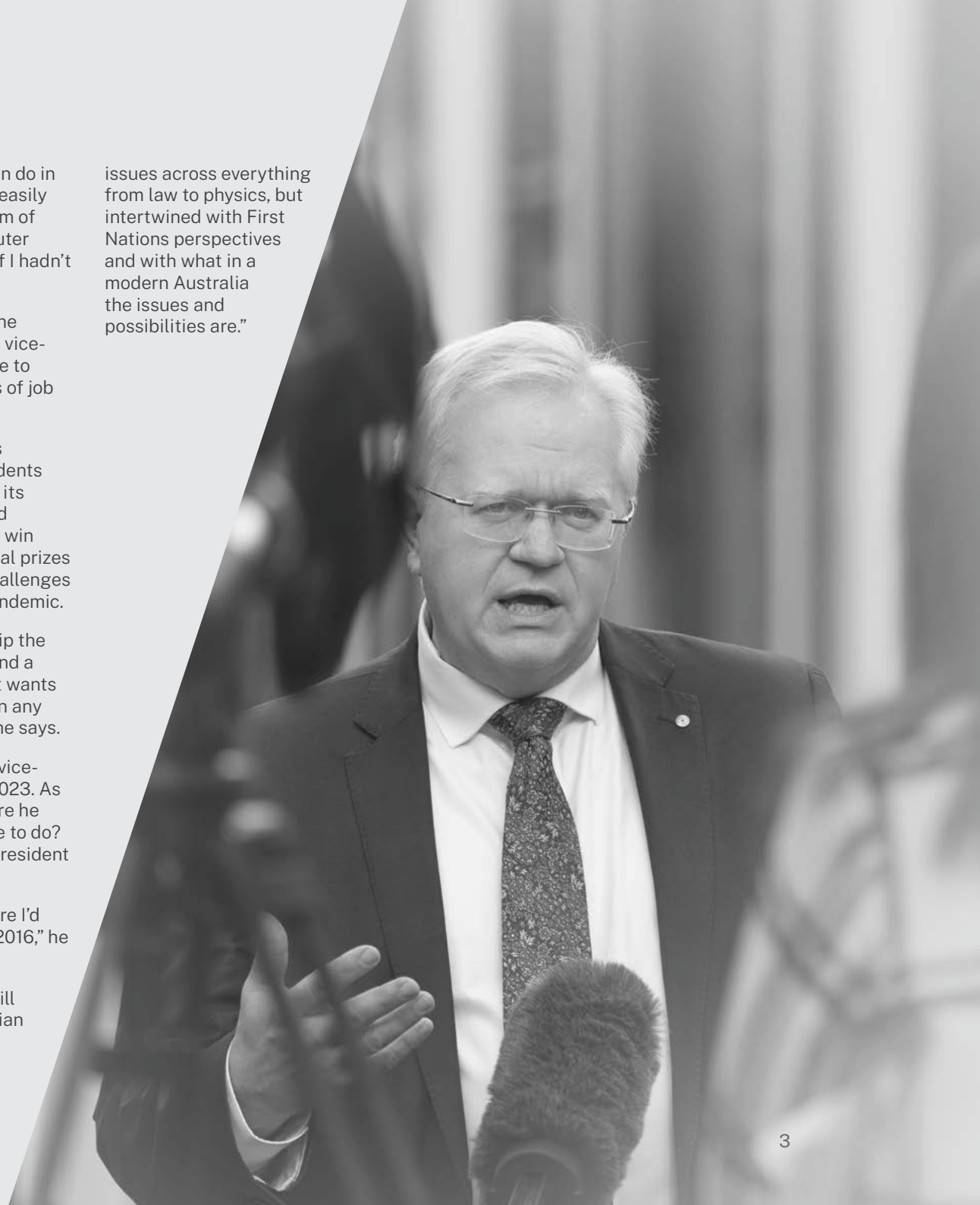
"I hope that under my leadership the University has coalesced around a direction and vision for what it wants to be... [which is] different than any other university in Australia," he says.

Brian will step down from the vice-chancellor role at the end of 2023. As for leaving the University where he feels he still has so much more to do? Highly illogical, as Star Trek's resident Vulcan might say.

"I'm not leaving. I was pretty sure I'd stay when I started the job in 2016," he says.

"I'd like to create a class that will explore contemporary Australian

issues across everything from law to physics, but intertwined with First Nations perspectives and with what in a modern Australia the issues and possibilities are."



Welcome to your next adventure

Australia offers incredible natural landscapes and city experiences – and the national capital is no exception. With a median age of 35, young and welcoming Canberra has kangaroos and koalas, rivers and mountains for you to explore, as well as great food, culture and a chilled city vibe. Say “g’day” to this cool capital.

Culture

On weekends, discover Braddon’s local coffee roasters and eclectic cafes, just a few minutes’ walk from ANU, before heading to the Haig Park markets for some locally made clothes, jewellery and produce. You can also take in a show at the theatre, an exhibition at the National Gallery, or National Museum, and discover the workings of Australia’s government at Parliament House.

Adventure

All year, you can walk or ride a bike along the weaving trails dotted around local nature reserves. In summer, take some time away from your studies at the National Zoo and Aquarium or swim in the Murrumbidgee River. In winter, hire some ski gear and flock with your friends to the Snowy Mountains.

Festivals and nightlife

Canberra’s awesome festivals span four distinct seasons. In spring, wander through flower-filled Floriade and in summer, watch a Canberra Comedy Festival gig. In autumn, the illuminating Enlighten Festival will brighten your eyes and the Truffle Festival, held in winter, will tantalise your taste buds. As the sun descends on another beautiful blue-sky day, head into the city to a live music venue, nightclub or over to the National Botanic Gardens, where you can watch a movie under the stars.

Food, drink and shopping

Canberra has rooftop bars serving tapas, local breweries specialising in beer and hamburgers, and bistros offering award-winning dishes.

When it comes to shopping, the city has a smorgasbord of small and large retailers, including boutique and vintage shops, several fresh produce markets and big retail centres.

Find a job

With your Australian student visa, you can work part-time for up to 48 hours every two weeks during semester and unrestricted hours during study breaks.

A highly educated city, Canberra provides many public and private sector employment opportunities for you to choose from.

Accommodation guarantee

ANU guarantees all first-year postgraduate students a room in a student residence. Learn more about the ANU accommodation guarantee on page 12

A capital city to love

#1 highest average income and lowest unemployment in Australia

Why Study in Canberra 2022

#1 most sustainable city in Australia

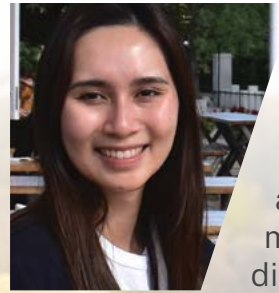
The World’s Most Sustainable Cities 2021

#3 smartest city in the world

IMD Smart City Index 2023

25% of people speak a language other than English

Multicultural Canberra 2022

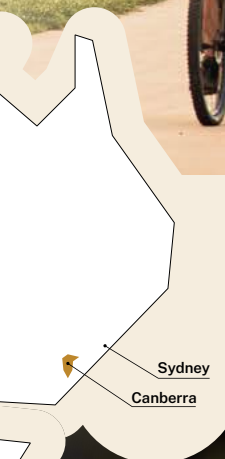


“My learning experience throughout my bachelor and current postgraduate degree in medicine has been amazing. ANU offers a large range of courses that have allowed me to explore different areas of science and discover my passion for medicine. I’m thankful that I’m being taught by passionate and caring lecturers and clinicians who instil knowledge, confidence and empathy in me.”

Katherine Nguyen – Vietnam
Doctor of Medicine and Surgery

Experience the knowledge capital

With more than half of the city’s population holding a degree, Canberra is a place of decision-makers and deep thinkers. Surround yourself with artists, researchers, scientists, diplomats, academics, policymakers and cutting-edge entrepreneurs, as well as the multinationals that have head offices here. They all call Australia’s capital home.



Realise your potential

Interactive tutorials, practical internship courses and research skill-building workshops are just a few of the ingredients that drive the learning experience at ANU. Studying in person on our campus is another – and will see you getting better results than studying online.

Learn from leaders in their field

Experience creative and meaningful approaches to teaching and problem solving. At ANU, classes are small, so you'll learn in innovative ways. Imagine embarking on a metaphorical voyage in a canoe to get a sense of the Pacific's diverse social and cultural dimensions or working in a 'flipped classroom' and having flexible interactive one-on-one meetings with your teachers.

Study in innovative learning spaces

At ANU, you can work in a recording or glass studio or with tools like 3D printers in MakerSpace. Depending on the courses you take or research you do, you can also explore nuclear physics in our heavy ion accelerator facility, argue in a contemporary moot courtroom, witness the SkyMapper telescope's creation of the first comprehensive digital survey of the entire southern sky, or code Gadi, the Southern Hemisphere's fastest supercomputer. All ANU courses are taught in innovative spaces that encourage exploration and collaboration.

Take an internship course

During your degree, you may be able to enrol in internship courses and gain a range of experience in business, government, the cultural sector and community settings. Our internships explore subjects as diverse as art collection management, archaeology, engineering, computing, public health, policy and diplomacy, as well as business, economics, law, science and strategy.

Participate in research-led learning

Our courses expose you to the research your teachers are conducting and provide experiential opportunities to engage with it. This research-led approach to learning triggers debate while developing your critical thinking skills.

Build your research skills

We offer workshops, events and short courses that will develop your research skills so you can get the most out of the research you conduct as part of your degree.

Conduct research on our other campuses

Your studies will mostly take place on our Acton campus, but a research project, hands-on field trip, specialist course or other opportunity could take you to our other campuses in the Australian Capital Territory, New South Wales and the Northern Territory.



Kioloa Coastal Campus



Mount Stromlo Observatory



“ANU has a very student-first approach to learning and teaching. I have been constantly encouraged to push my limits, explore my knowledge and think outside the box. Assignments are designed in a manner that help build soft skills like accountability, collaboration and cooperation. The professors are a true inspiration. They allow students to choose their path to reach the final goal within prescribed limits. They challenge us to explore and use our intellect and imagination. This is a place where you will also grow personally from your experience; it is a roller coaster journey, where I succeed and lose, but in the end I always learn. At every step I’ve been pushed to think beyond the limits, face challenges and become a better version of myself.”

Gurisha Gupta – India
Master of Finance

Grow your network

Networking at ANU develops professional contacts, creates relationships and connects you with information and knowledge. It can also build your reputation and provide you with answers, just when you need them.

Talk with employers

Each year, we will invite you to the Career Connect fair, usually held in Semester 2. It brings industries and companies together on campus so you can talk to them about work opportunities and build your professional networks.

Intern in public policy environments

Unique to ANU are a range of special internship programs that could see you working during semester breaks alongside politicians and their aides in the ACT Legislative Assembly, Parliament House or overseas in the United States Congress. We also offer internship courses in non-policy disciplines.

Mingle with other researchers

Research support is about connection and collaboration. In fact, we have a Research and Innovation Services office which provides our higher degrees by research (HDR) communities with training, fellowships and support, and a Graduate Research Office that works with researchers directly. Training and activities where you'll mingle with other researchers include boot camps, candidate inductions, ethics and integrity workshops, as well as entrepreneurship opportunities and local innovation networks.

Attend ANU events

Events are held in person and online. They are great opportunities to meet other like-minded people and talk to academics and special guests. You can attend tours of campus, author and artist talks, panel discussions, lectures, music ensembles and conversations with experts about aspects of their research.

Connect with alumni around the world

Among our alumni are former Australian prime minister Dr Kevin Rudd AC, Queensland premier Annastacia Palaszczuk and Indonesia's former foreign minister Dr Raden Mohammad Marty Muliana Natalegawa – as well as several musicians, comedians, CEOs, artists, authors and scientists. Meet them at our events. And, when you graduate, enjoy all the benefits of being part of our engaging international alumni community.

Join a club or society

Whether you're interested in the arts, languages, advocacy, physics or sport, there's a student-run social, academic or cultural club or society to join that will connect you with other like-minded people.

Explore ANU clubs at <https://anusa.com.au/life/clublist/>

Explore events calendar

ANU events share and celebrate research, education, policy engagement and community. Listen to podcasts and attend lectures and panel discussions with some of the world's finest thinkers.

Discover ANU events



“The systems engineering curriculum at ANU is giving me the skills to contribute to cross-disciplinary problems. It’s shown me how to communicate engineering work and solutions with both specialists and the general public. The program has

equipped me with insight into complex practical and theoretical problems in the energy industry. I can also evaluate complex systems in terms of technical and social perspectives. ANU offers me a wide range of study resources and extraordinary teaching experiences. I work with highly distinguished scholars in the field and excellent students from all around the world.”

Tuan Tran – Vietnam

Master of Engineering (Renewable Energy)



“I am from the fourth smallest country in the world. This opportunity to study and learn from the best academics, diplomats and policy practitioners will have a lifelong impact on my character, the work I will contribute when I return home,

and the learning process that I will continue as an ANU alumnus.”

Moira Simmons – Tuvalu

Master of National Security Policy

Support for your success

Fitting further study around your other commitments requires support, and we provide it in spades. Whether it's childcare or accommodation you need to meet your goals – or even career guidance and enrolment help, it's all here.

Student advisers

Our advisers are available whenever you need support with settling into university life. They can help you with orientation tasks, enrolling in your classes and other things you may need to do before semester starts.

English language support

Our fun and relaxed English conversation groups are a great way to meet new people and practice your English language skills with native speakers.

Childcare

We have five childcare centres to support you and your family. They cater for all ages up to pre-school level. Some are committee-run, not-for-profit centres, while others are privately owned and run.

Enrolment advice

ANU Student Central is your first port of call for anything related to the administration of your degree – from advice about enrolling in your courses and managing your timetable to payment of fees and how to get ready to graduate. Your ANU college can also provide you with similar support.

Academic skills

We supply workshops and one-on-one sessions on academic writing, research techniques, communication strategies, referencing, academic integrity and how to prepare for exams. Just tell us what you need, and we'll provide it.

Career planning

The ANU Careers team can give you one-on-one practical advice about your current or next career and will point you to resources that can help you increase your impact at interview.

Wellbeing services

Whenever you need confidential medical care or counselling, you'll find it right here on campus. You can either make an appointment or walk in to see a doctor or nurse.

Spiritual guidance

When you need spiritual support, our multifaith chaplains can help. They represent the Anglican, Catholic and Baptist churches and the Muslim, Hindu, Jewish and Baha'i faiths, as well as the humanist tradition.

Mentoring

SET4ANU is a free mentoring program designed to help you transition to life at ANU. Signing up to the program will match you with a later-year student volunteer who can help ease you through your first few weeks on campus.

24/7 crisis line

You can phone this crisis service if you need relief from emotional distress, help with managing immediate threats to your safety or when you want to learn about pathways to longer-term support services.

Graduate research services

Our Graduate Research Office supports higher degrees by research (HDR) candidates. It manages enrolment, leave and extensions, thesis submissions, examinations and restrictions, and coordinates scholarship rounds.

Email: gro@anu.edu.au
Phone: +61 2 6125 5777

Students living with a disability

If you are a carer, have a medical condition or are living with a disability, we'll provide you with advice about support and adjustments that will help you take part fully in your degree program.

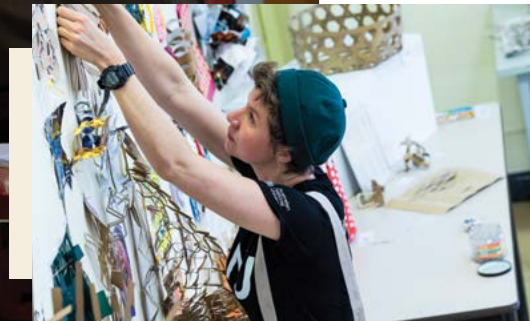
Email: access.inclusion@anu.edu.au
Phone: +61 2 6125 5036



“I am a lawyer, researcher and aspiring legal scholar. Ever since my undergraduate law studies in Nigeria and qualification as a barrister and solicitor, I’ve been eager to continue broadening my academic and professional horizons. So, I set my sights on international study with the help of an education agent and then the ANU Chancellor’s International Scholarship. My courses give me insight to matters related to one of my main passions: international economic law – and ANU College of Law events draw on the expertise of its academics, as well as partners in the legal profession, politics and other sectors.”

Anu Adeyemi – Nigeria

Master of International Law and Diplomacy



A campus experience that's all about you

Our beautiful and safe campus is a welcoming hub of study and social activity. It offers everything you need to complete your assignments, meet new people and move easily between your classes, part-time job and personal life.

A room of your own

Living in a secure, self-catered student residence on our campus puts your classes, libraries and all the amenities of the Kambri student hub in easy reach, while providing you with a supportive community, student events and residential advisers.

ANU guarantees all first-year postgraduate students a room in a student residence. You can choose to live with other postgraduate scholars, or in a mixed residential community of undergraduate and postgraduate students.

As a guide, rates for postgraduate accommodation in 2023 ranged between AUD309 and AUD350 per week.

Choose your room

We offer a wide range of rooms and studios, both on and off campus.

[Explore ANU residences](#)

Apply for student accommodation

Apply for a room before you receive a study offer. We'll try to place you within the residence of your choice.

[Request a room](#)

City on your doorstep

The main ANU campus at Acton is just a short walk or bike ride away from Canberra's CBD. This proximity makes it easy to travel between classes and all the things you may need in the city, including banks, hairdressers, grocers and public transport.

You'll find some excellent restaurants, bars, theatres and music venues in the CBD as well.

24/7 library access and study spaces

Our five libraries are open seven days a week – and four of them 24 hours a day. They provide access to PC and Mac computers, printers, copiers and study spaces, as well as regular workshops on how best to utilise their vast resources.

Our campus has plenty of other study spaces to choose from too. For starters, there's the six floors of the striking Marie Reay Teaching Centre that include flexible spaces with tables and chairs, kitchen facilities, cutting-edge technology and panoramic views of the city.

Meet, shop and eat

Conveniently on the ANU campus are cafes, a pharmacy, supermarket, and a bookshop. They provide everything from basic groceries and snacks, to prescription medicines, stationery and textbooks. Catch up with classmates over a coffee or grab a bag of groceries on-the-go.

Stay fit and healthy

Maintain your physical and mental fitness at our swimming pool, two gyms and four ovals. You can book our indoor courts and fitness spaces at great student rates. Like Canberra, the University is bike and e-scooter friendly.

Catch public transport to campus

You can easily travel to and from campus on Canberra's efficient light rail and bus networks. The city's roads have a network of bike paths that connect the city and suburbs. Affordable car parking is also available on campus.



24/7 security

The ANU Security team and the free ANUOK app work together to make sure our campus is a safe environment for you. Reach them quickly by downloading the ANUOK app when you arrive.

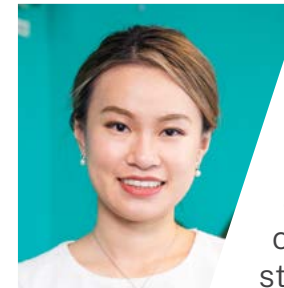
Download the ANUOK app



“As part of the Australian Awards Scholarship network, I have had an experience of ANU that has gone beyond the classroom. Recently, I travelled to Newcastle in New South Wales to network with professors and learn about how Australia is tackling the UN Sustainable Goals. It's been eye-opening and inspiring to be part of such initiatives.”

Binh Thanh Ho, Vietnam

Master of Public Policy



“I feel lucky to have been given real industry experience in an IT company and to be able to work as a tutor for a computer science course while studying at ANU. One of the best resources here is the members

of the community. Interact with lecturers, tutors, peers and staff members as you will have something new to learn. Sometimes, conversations can lead to more opportunities.”

Ting Wang – China

Master of Digital Humanities and Public Culture

Find your next challenge

From the arts, politics, international studies and languages to the sciences, cybernetics, health, law and Asia-Pacific studies, there's a coursework or research degree for you at ANU. Each has the exceptional knowledge and learning experiences you need to get where you want to go.

Postgraduate study pathway

- Graduate certificate (24 units)
Six months' full-time study
- Graduate diploma (48 units)
One year full-time study
- Master degree (96 units)
Two years' full-time study
- Master degree (advanced) (96 units)
Two years' full-time study, including a 24-unit supervised sub-thesis
- Higher degrees by research (HDR)

Subject areas

- Arts, society and culture
- Asia-Pacific, international relations and security studies
- Business and commerce
- Engineering and computing
- Health, medicine and psychology
- Law and legal studies
- Natural, physical and environmental sciences

Coursework degrees

We offer graduate certificates, graduate diplomas and master's degrees. Some of these qualifications have a research part that involves working with an academic supervisor. ANU also provides the following coursework programs.

Flexible double master degree

Unique to ANU, the powerful flexible double master degree is a two-year study program of the ANU College of Arts and Social Sciences. Build yours by combining two master's programs from the list below.

- Anthropology
- Applied Anthropology and development
- Art history and curatorial studies
- Contemporary art
- Digital humanities and public culture

- Diplomacy
- History
- Management
- Pacific development
- Social research methods

Short courses

Also known as graduate certificates, these are great places to start postgraduate study if you're not ready to commit to a bigger program just yet. To find the one for you, search 'graduate certificates' on our programs and courses web page.

For a full list of postgraduate coursework degrees, go to page 16.

Research degrees

ANU offers the following higher degrees by research (HDR) programs. You can apply for these throughout the year.

- Master of Philosophy (MPhil)
- Doctor of Philosophy (PhD)

Explore our research areas on page 20 and discover how to apply for them on pages 26-29.

Find your degree

Browse our coursework and research degrees and discover GPA, prerequisite subject and any other admissions requirements that you'll need to meet before you apply.

[Search programs and courses](#)



"I already had a clear idea of what I wanted to do and I moved all the way to Australia because ANU had exactly what I needed in terms of research. I'm getting a quality education here. The

relationship that a student has with a supervisor or a professor – it's very casual. And that's one thing that I really like; I don't have to hesitate before troubling them with questions because they are just there to help you. That gives me permission to explore and satisfy my curiosity and was a good surprise. I won't say it has been a very easy journey because, considering the level of the University, it has been a draining one – but in a good way. You just need to buckle up and when the semester begins, or when your research begins, you need to power through that."

Priya Rao – Zambia

Master of Science (Advanced)



YOUR STUDY OPTIONS

160 postgraduate programs

Our extensive postgraduate study options include graduate certificates, graduate diplomas and master's degrees, as well as higher degrees by research.

Program name ¹	Duration (years)	Semester Intake	Indicative annual fee for international students (AUD) ²	CRICOS code
ANU College of Arts & Social Sciences				
Graduate Certificate of Demography	0.5	1	24,020	108301A
Graduate Certificate of Middle Eastern and Central Asian Studies	0.5	1 & 2	24,016	107758J
Graduate Certificate of Studies	0.5	1 & 2	24,840	082261M
Master of Anthropology	1	1 & 2	48,035	108302M
Master of Anthropology (Advanced)	1.5	1 & 2	48,035	108303K
Master of Archaeological and Evolutionary Science	2	1 & 2	48,035	096399M
Master of Archaeological and Evolutionary Science (Advanced)	2	1 & 2	48,035	096400A
Master of Art History and Curatorial Studies	1	1 & 2	45,060	108306G
Master of Art History and Curatorial Studies (Advanced)	1.5	1 & 2	48,035	108307F
Master of Contemporary Art Practices	1	1	45,060	108308E
Master of Contemporary Art Practices (Advanced)	1.5	1	45,060	108309D
Master of Digital Humanities and Public Culture	1	1 & 2	48,035	108314G
Master of Digital Humanities and Public Culture (Advanced)	1.5	1 & 2	48,035	108315F
Master of General and Applied Linguistics	1.5	1 & 2	48,035	108329M
Master of General and Applied Linguistics (Advanced)	2	1 & 2	48,035	082302G
Master of History	1	1	48,035	108325D
Master of History (Advanced)	1.5	1 & 2	48,035	108326C
Master of Middle Eastern and Central Asian Studies	1.5	1	48,035	108330G
Master of Middle Eastern and Central Asian Studies (Advanced)	2	1	48,035	082339E
Master of Museum and Heritage Studies	1.5	1 & 2	48,035	108331F
Master of Museum and Heritage Studies (Advanced)	2	1 & 2	48,035	085332K

Program name ¹	Duration (years)	Semester Intake	Indicative annual fee for international students (AUD) ²	CRICOS code
Master of Social Research Methods	1	1 & 2	48,035	108327B
Master of Social Research Methods (Advanced)	1.5	1 & 2	48,035	108328A
Master of Studies (Exit only)	1.5	1 & 2	50,760	108332E
ANU College of Asia & the Pacific				
Graduate Certificate of Climate Policy	0.5	1	25,380	103367A
Graduate Certificate of Diplomacy	0.5	1 & 2	25,380	103869A
Graduate Certificate of Engaging Asia	0.5	1 & 2	24,840	103364D
Graduate Certificate of Engaging the Pacific	0.5	1	24,840	103365C
Graduate Certificate of Environmental and Resource Economics	0.5	1	24,016	103865E
Graduate Certificate of Environmental Management	0.5	1	25,380	107175K
Graduate Certificate of International and Development Economics	0.5	1	24,016	103866D
Graduate Certificate of International Relations	0.5	1 & 2	24,840	103867C
Graduate Certificate of National Security Policy	0.5	1	25,380	103864F
Graduate Certificate of Pacific Development	0.5	1 & 2	24,840	103366B
Graduate Certificate of Policy Design and Analysis	0.5	1	24,840	103871G
Graduate Certificate of Political Science	0.5	1 & 2	24,840	103870H
Graduate Certificate of Public Management	0.5	1	24,840	103863G
Graduate Certificate of Public Policy	0.5	1	25,380	089715G
Graduate Certificate of Strategic Studies	0.5	1 & 2	24,840	103868B
Graduate Diploma of International Affairs	1	1 & 2	50,760	088970M
Master of Asian and Pacific Studies	2	1 & 2	48,035	093286M
Master of Climate Change	1.5	1	50,760	102926E
Master of Diplomacy	1	1 & 2	50,760	111566E
Master of Engaging Asia	1.5	1 & 2	50,760	103371E
Master of Environmental and Resource Economics	2	1	46,035	082295A
Master of Environmental Management and Development	2	1	50,760	082296M
Master of International and Development Economics	2	1	48,035	082308A
Master of International Law and Diplomacy	2	1 & 2	50,760	0101475
Master of International Relations	2	1 & 2	50,760	082309M
Master of National Security Policy	1.5	1	50,760	0101473

Program name ¹	Duration (years)	Semester Intake	Indicative annual fee for international students (AUD) ²	CRICOS code
Master of Pacific Development	1	1 & 2	50,760	103372D
Master of Political Science	1.5	1 & 2	50,760	102925F
Master of Political Science (Advanced)	2	1 & 2	50,760	096438J
Master of Public Administration	1.5	1	50,760	102923H
Master of Public Policy	2	1	50,760	082349C
Master of Regulation and Governance	1.5	1 & 2	50,760	103373C
Master of Strategic Studies	1.5	1 & 2	50,760	102924G
Master of Strategic Studies (Advanced)	2	1	49,490	082355E
Master of Technology Governance	1.5	Summer Sessions	49,680	111567D

ANU College of Business & Economics

Graduate Certificate of Accounting	0.5	1 & 2	24,015	052700G
Graduate Certificate of Economics	0.5	1 & 2	24,015	082256G
Graduate Certificate of Finance and Actuarial Statistics	0.5	1 & 2	24,015	082257G
Graduate Certificate of Management	0.5	1 & 2	24,015	030000G
Graduate Diploma of Economics	1	1 & 2	48,035	082263J
Master of Accounting	2	1 & 2	48,035	050800J
Master of Actuarial Practice	2.5	1 & 2	48,035	079658E
Master of Actuarial Studies	2	1	48,035	050802G
Master of Applied Accounting	1	1 & 2	48,035	103370F
Master of Applied Accounting and Master of Financial Management	2	1 & 2	48,033	111569B
Master of Applied Economics	2	1 & 2	48,035	082269C
Master of Applied Finance	1.5	1 & 2	48,035	079659D
Master of Business Information Systems	2	1 & 2	48,345	050796M
Master of Commerce (Advanced)	2	1 & 2	48,035	093294M
Master of Economic Policy	2	1 & 2	48,035	082289K
Master of Economics	2	1 & 2	48,035	082290F
Master of Entrepreneurship and Innovation	2	1 & 2	48,035	091185K
Master of Finance	2	1 & 2	48,035	039762C
Master of Financial Economics	2	1	48,035	086226D
Master of Financial Management	1	1 & 2	48,035	029316G

Program name ¹	Duration (years)	Semester Intake	Indicative annual fee for international students (AUD) ²	CRICOS code
Master of Financial Management and Law	2	1 & 2	49,397	103872F
Master of International Management	2	1 & 2	48,035	088059J
Master of Management	1	1 & 2	48,035	107176J
Master of Management (Advanced)	2	1 & 2	48,035	107177H
Master of Marketing Management	2	1 & 2	48,035	091184M
Master of Professional Accounting	1.5	1 & 2	48,035	050799G
Master of Project Management	2	1 & 2	48,035	082344G
Master of Statistical Data Analysis	1	1 & 2	50,217	111568C
Master of Statistics	2	1 & 2	50,760	082353G

ANU College of Engineering, Computing & Cybernetics

Graduate Diploma of Applied Cybernetics	1	1	50,760	099473D
Graduate Diploma of Applied Data Analytics	1	1	50,760	097201M
Graduate Diploma of Computing	1	1 & 2	50,760	078938E
Master of Applied Cybernetics	1	1 & 2	50,760	103368M
Master of Applied Cybernetics (Advanced)	1.5	1	50,760	103369K
Master of Applied Data Analytics	1.5	1	50,760	097058B
Master of Computing	2	1 & 2	50,760	078940M
Master of Computing (Advanced)	2	1 & 2	50,760	085934F
Master of Engineering in Electrical Engineering	2	1 & 2	50,760	077326G
Master of Engineering in Mechatronics	2	1 & 2	50,760	077326G
Master of Engineering in Renewable Energy	2	1 & 2	50,760	077326G
Master of Machine Learning and Computer Vision	2	1 & 2	50,760	099247C

ANU College of Health & Medicine

Doctor of Medicine and Surgery	4	1	90,130	077442D
Master of Clinical Psychology	2	1	53,610	003116G
Master of Culture, Health and Medicine	2	1 & 2	49,397	082283E
Master of Culture, Health and Medicine (Advanced)	2	1 & 2	49,397	082284D
Master of Neuroscience	2	1 & 2	53,610	082376M
Master of Neuroscience (Advanced)	2	1 & 2	53,610	082342K
Master of Professional Psychology	2	1	53,610	096441C
Master of Public Health	2	1 & 2	50,760	082346F
Master of Public Health (Advanced)	2	1 & 2	50,760	082347E

YOUR STUDY OPTIONS

Program name ¹	Duration (years)	Semester Intake	Indicative annual fee for international students (AUD) ²	CRICOS code
ANU College of Law				
Graduate Certificate of Law	0.5	Summer session	25,380	082258F
Graduate Certificate of New Technologies (online)**	0.5	1 & 2	22,932	N/A
Juris Doctor	3	1 & 2	56,470	061559M
Master of Financial Management and Law	2	1 & 2	49,397	103872F
Master of Laws	1	Summer session	50,760	006504E
ANU College of Science				
Graduate Certificate of Disaster Risk Science and Sustainability	0.5	1	25,380	099463F
Graduate Certificate of Science Communication	0.5	1 & 2, winter and spring sessions	25,380	103862H
Graduate Diploma of Science	1	1 & 2	50,760	003114K
Master of Biotechnology	2	1 & 2	50,760	082279A
Master of Biotechnology (Advanced)	2	1 & 2	50,760	082280G
Master of Earth Sciences (Advanced)	2	1 & 2	50,760	082288M
Master of Energy Change	2	1 & 2	50,760	082291E
Master of Energy Change (Advanced)	2	1 & 2	50,760	082292D
Master of Environment	2	1 & 2	50,760	082293C
Master of Environment (Advanced)	2	1 & 2	50,760	082294B
Master of Forests	2	1 & 2	50,217	111570J
Master of Forests (Advanced)	2	1	50,217	111571H
Master of Mathematical Sciences (Advanced)	2	1 & 2	50,760	082337G
Master of Science (Advanced) in Agricultural Innovation	2	1 & 2	50,760	0101484
Master of Science (Advanced) in Astronomy and Astrophysics	2	1 & 2	50,760	0101477
Master of Science (Advanced) in Biological Sciences	2	1 & 2	50,760	096440D
Master of Science (Advanced) in Materials Science	2	1 & 2	50,760	102931H
Master of Science (Advanced) in Nuclear Science	2	1 & 2	50,760	099251G
Master of Science (Advanced) in Precision Instrumentation and Measurement	2	1 & 2	50,760	099249A
Master of Science (Advanced) in Quantitative Biology and Bioinformatics	2	1 & 2	50,760	096440D

Program name ¹	Duration (years)	Semester Intake	Indicative annual fee for international students (AUD) ²	CRICOS code
Master of Science (Advanced) in Quantum Technology	2	1 & 2	50,760	099253E
Master of Science (Advanced) in Theoretical Physics	2	1 & 2	50,760	0101482
Master of Science Communication	2	1 & 2	50,760	082350K
Master of Science in Agricultural Innovation	2	1 & 2	50,760	0101483
Master of Science in Astronomy & Astrophysics	2	1 & 2	50,760	0101476
Master of Science in Biological Sciences	2	1 & 2	50,760	096439G
Master of Science in Earth Sciences	2	1 & 2	50,760	0101480
Master of Science in Materials Science	2	1 & 2	50,760	102930J
Master of Science in Mathematical Sciences	2	1 & 2	50,760	102929B
Master of Science in Nuclear Science	2	1 & 2	50,760	099254D
Master of Science in Precision Instrumentation and Measurement	2	1 & 2	50,760	099248B
Master of Science in Quantitative Biology and Bioinformatics	2	1 & 2	50,760	096439G
Master of Science in Quantum Technology	2	1 & 2	50,760	099252F
Master of Science in Theoretical Physics	2	1 & 2	50,760	0101481

To be considered for admission to a program at ANU, you must meet the minimum admission requirements. Scan the QR code to learn more about program-specific admission requirements.

1. The University reserves the right to alter or discontinue its programs as required. Please note that not all degrees are available to commence in semester 2.

* This degree program has further selection criteria in addition to academic results.

2. Indicative annual fees for international students are subject to change. These fees are intended to serve as a general guide and should not be considered a guarantee of the actual fees that will be charged. Tuition fees for individual courses are available in the relevant programs & courses course entry. For further information on international tuition fees, please visit programsandcourses.anu.edu.au

** These programs are not CRICOS registered. International students cannot study these programs in Australia on an Australian student visa.

Any exceptions are at the discretion of the academic area.

In their words

Two alumni and a current student talk about the ANU learning experience, why they chose to study with us and some of the skills and knowledge they have gained during their degree.



Nathalia Dias – Brazil

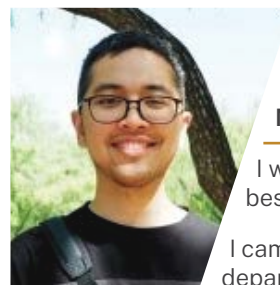
Graduate, Master of Archaeological and Evolutionary Science (Advanced)

With access to the ANU School of Archaeology and Anthropology laboratory in paleo history – the only one of its kind in the Southern Hemisphere – I was able to continue the research I began in Brazil. I was lucky enough to find senior lecturer, Dr Justyna Miszkiewicz, to help me.

I learned a lot about scientific methods at ANU, about the different possibilities in archaeology – things I didn't know before – while focusing on what I needed and wanted to do for my career. Each of my courses was theoretical and practical and I was able to practice analysis in them, which I also had not been able to do back in Brazil.

I studied courses on social anthropology and the applications of social anthropology to archaeology, and learned more about carbon dating. I also studied health and disease. The Master of Archaeological and Evolutionary Science (Advanced) is the only course in the world, I think, with that combination.

Moving from Brazil to Canberra to study at ANU was one of the best decisions I've made. After I graduated, I landed a job with Terra Rosa Consulting in Perth. The combination of archaeology and biological anthropology I had studied at ANU was very important for the project I worked on.



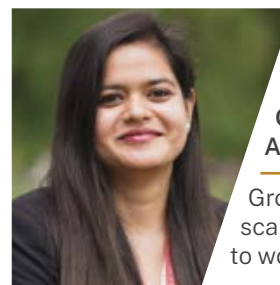
Ounu Zakiy Sukaton – Indonesia

Master of General and Applied Linguistics

I was interested in forensic linguistics and ANU offers the best forensic linguistics learning in Australia.

I came to ANU because I was really interested in the linguistics department. Their academic staff, such as Dr Susy Macqueen and Dr Yuko Kinoshita, are very well known. I came with high expectations, but they were exceeded by the reality on the ground.

It was hard, but the standards were very good. I enjoyed working with professionals, people who are good in their field. We did hands-on exercises on how to use specific tools, computer tools and real analysis on specific cases. You get to practice what you learn in class, not just talk about it in theory.



Astha Sharma – India

Graduate, Doctor of Philosophy, ANU School of Engineering

Growing up, we used to have severe heat waves and water scarcity due to drought. I went into renewable energy research to work towards solving the problem.

From the start, I was intrigued by the idea of working on solar cells. The solar photovoltaic group at ANU is one of the best in the world, and it was the cutting-edge research they were doing that prompted me to apply here.

During my bachelor's and master's degrees I had devoured the research papers of recognised world leaders in solar cells at ANU, Dr Fiona Beck and Dr Kylie Catchpole. They became supervisors for my PhD research, along with Dr Siva Karuturi and Dr Heping Shen.

When the solar hydrogen process that we designed met the US DOE standard, we set a world record for solar-to-hydrogen efficiency and provided a pathway towards large-scale renewable hydrogen.

Inspiring research to explore

Research is at the core of everything we do. It informs the content of our degrees, influences public policy and solves some of our region's greatest challenges.

Culture, creativity and society

Indigenous studies

We're addressing key issues for Indigenous populations and increasing our understanding of their cultures, laws and histories with cross-disciplinary research in a number of fields.

Social structures & processes

Our network of archaeology, anthropology and history scholars are working in remote and metropolitan Australia and Asia and the Pacific to understand societies from ancient times to the present day.

The arts

Our interdisciplinary cultural inquiry, creative arts, museum and art curatorship research engages with the social issues facing Australia, including Indigenous cultural expression.

Environment and sustainability

Climate change

Our interdisciplinary research is contributing to climate change mitigation and developing adaptation solutions. With our connections to government, the private sector and society, it's also informing policy advice.

Biodiversity

With deep connections to CSIRO and global partners, ANU is pushing biodiversity science forward using innovative capabilities in genomics, bioinformatics, ecological modelling and biodiversity policy.

Energy alternatives

We're exploring new technologies for nuclear, fusion, solar, energy storage, enhanced oil and gas, biofuels and photosynthesis, and smart grid technology.

Future security

Strategy & defence

We're Australia's home of strategic studies research, education and commentary. Our focus is on understanding the complexity of Asia's strategic environment, Australia's place in it, and the utility and application of armed forces in international affairs.

Food security

We're tackling the problems of food security in an interdisciplinary way with global partners. Our research explores crop productivity and disease, water and land management rights and development, as well as economics and policy to improve outcomes for vulnerable populations.

Resilience & adaptation

We are looking at the effects of development, climate change and policy decisions on Australian and Asia-Pacific region populations, including First Nations peoples.

Health and medicine

Mental health & cognition

Our interdisciplinary behavioural research has applications in e-health, ageing and wellbeing, chronic disease management and perceptual psychology.

Health policy

We're breaking down some of the barriers to health care, including access, costs and insufficient resources, with research that spans epidemiology, economics, regulation and informatics.

Combating diseases & conditions

By tackling complex diseases with our hospital and health provider partners, we're translating findings into policies that improve health outcomes for all people.



“During my degree, there have been a lot of challenges. The most exciting challenge was when my supervisors Professor Andy Hogg and

Dr Wilma Huneke of the

ANU Research School of Earth Sciences and I decided to run a new simulation in the two weeks before my thesis submission. I had to write more codes, plot more figures and put these results into my thesis before submitting it. The pressure was on, but Andy and Wilma encouraged me a lot and I just focused on doing the best I could for everything, rather than worrying about the result I would get. In the end, I submitted a good piece of work on time. I will continue the work I started in my master’s program by exploring physical oceanography and ocean modeling around Antarctica. I am currently trying to find a PhD program and am considering multiple universities, including ANU.”

Hangyu Meng – China

Graduate, Master of Earth Sciences (Advanced)

YOUR RESEARCH OPTIONS

Regional and global context

Asia & Pacific countries

ANU hosts the English-speaking world's largest assembly of scholars dedicated to working on Asia and the Pacific countries' cultures and languages.

Regulation, justice & law

We're exploring legal systems and governance; Australian, international and public law; social justice; human rights and criminology.

Economic growth & wellbeing

Our policy relationships and strengths in macroeconomics, global finance and corporate strategy, among other disciplines, make ANU a powerhouse of business research in Australia.

Science

Space sciences

Exploration of cosmology, galaxies, stars and exoplanets at ANU is seeing us partner with global initiatives, such as the Giant Magellan Telescope, two optical observatories, and internationally respected luminaries like Nobel laureate Professor Brian Schmidt AC FAA FRS.

New materials & processes

ANU conducts extensive research into materials science and manufacturing, chemical synthesis, nanoscience and nanotechnology and their application in many industries, including biomedical, space, manufacturing and energy.

Information age

Through mathematics, computer science, business information systems, and engineering, we're working to improve the capabilities of technology, and its ability to perform tasks more efficiently and accurately, while managing digital change.

Read our research news

Discover the latest developments in our research expertise, study programs, industry partnerships, multi-college collaborations and cutting-edge facilities.

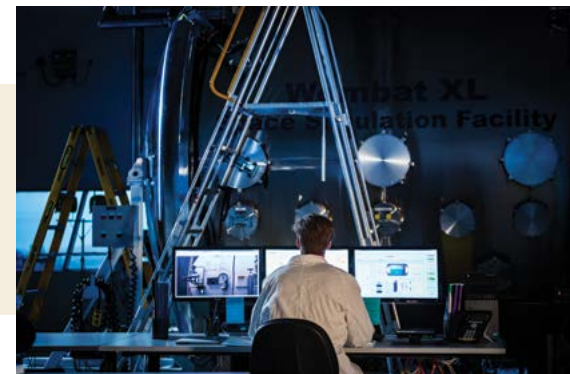
[Learn more](#)



“My Master of Laws (LLM) degree prepared me for the rigours of my PhD program. I had also practised as a lawyer in the Philippines, specialising in the fields of cybercrime prevention and data privacy protection. ANU offers a strong research profile and an opportunity to work under the supervision of leading scholars. These were my considerations in selecting which schools to apply for. The relationship of ANU with the government crafting policies concerning international law and Canberra’s quiet atmosphere create a unique environment for writing a doctoral dissertation in.”

Gemmo Fernandez – Philippines

Doctor of Philosophy



How to fund your degree

Ways to fund your tuition fees and other study expenses include getting a student loan, earning a scholarship or getting a job in Australia. Explore options for your situation.

1. Apply for a scholarship

ANU offers 200-plus scholarships every year. Their availability depends on the course you choose, the college managing it and your circumstances. Start by viewing all ANU international postgraduate scholarships and finding out how to apply for them.

Browse
postgraduate
scholarships

2. Get a Chancellor's International Scholarship

This ANU scholarship can support up to 200 academically outstanding international students from around the world – and we will automatically consider you for it when you submit your application to ANU. It reduces tuition fees by 25% or 50%, as well as the amount of your tuition fee deposit.

Learn more about
the Chancellor's
International
Scholarship

3. Gain credit for study and work experience

Credit for prior study or outstanding work experience reduces the cost of your degree by saving you from having to complete a course. Course credit can be equivalent to the value of a specific ANU course (specified credit) or not equivalent (unspecified credit) and count towards a major, minor or elective course.

Learn more about
course credit

4. Work in Australia

With your Australian student visa, you can work part-time for up to 48 hours every two weeks during semester – and unrestricted hours during study breaks. This could help fund your living costs and give you some practical work experience while you're in Australia.

5. Earn a scholarship from your home country

Some governments offer financial support to international students studying in Australia. You'll have to find more information yourself, since each country is different, but if you're successful, a scholarship from your government can cover a large portion of your study fees.

6. Take out a student loan

A student loan is like any other loan; it involves repaying an amount you borrow together with accumulated interest. Check if your government offers student loans, as they usually have less interest than private institutions.

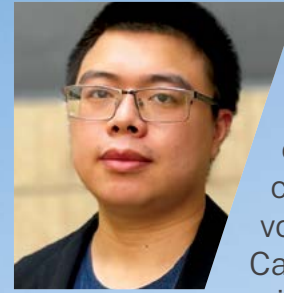
7. Ask your employer to fund your degree

Most employers budget for professional development and further study is one of the best ways to build your skillset while adding value to your organisation. If your employer is going to gain from your studies, think about asking if they will pay for your degree.

Paying your ANU tuition

When you accept an offer with ANU, we'll ask you to pay a AUD20,000 (or AUD40,000 for Doctor of Medicine and Surgery) deposit. Your tuition fees will then be withdrawn from this deposit until the money runs out, after which you'll receive an invoice at the start of each semester.

Learn more about your work rights as an international student on the Fair Work Australia website,
www.fairwork.gov.au



“The financial stability of the Chancellor’s International Scholarship enables me to choose how I want to contribute to the community. Whether it’s volunteering with the ReCyclery and the Canberra Environment Centre, ANU Thrive, or joining the faculty as a tutor, I would not have the free time to do such things – plus keep up with my study – if I didn’t have this scholarship.”

Trevin Susanto – Indonesia

Master of Economics

Coursework applicants

Make sure you meet our admission requirements before you apply. When we receive your application, we'll automatically consider you for a range of scholarships.

Admission requirements

Check that you meet the following requirements now. Doing this will make the application process smoother for you.

Qualifications checklist

I have one of the following:

- an Australian bachelor's degree or international equivalent
- an almost completed Australian bachelor's degree or international equivalent*
- extensive and related work experience**

Related subjects and scores

Some ANU degrees have related or 'cognate' subjects that you will need to have completed. Some also have a minimum grade point average (GPA)

for you to meet. Learn more about these by clicking on the 'Admissions and fees' tab in your degree program's web page.

Supporting documentation

You will need to upload to your application clear, colour copies of your:

- academic transcripts
- graduation certificates
- curriculum vitae
- documentation that proves you meet the ANU English language requirements.

+ Let us know the date you expect to complete your degree in your application form and then supply us with a copy of it after we make you an offer.

** If you do not have a bachelor's degree, you can provide a curriculum vitae with your ANU application that includes your employment history (duties, responsibilities, hours, name and nature of employer) and provide the contact details of two referees. Your work experience will need to reflect the requirements of the degree you are applying for, so please find out what these are on the program and courses web pages at programsandcourses.anu.edu.au

How to apply

You can nominate only one degree on your application. Apply before the 15th day of the month and ANU will consider you for an offer on the 1st business day of the following month.

Applying costs AUD110.

When we receive your application, we will rank it against other candidates applying for the same degree.

You need to apply for accommodation separately. Learn more on page 12.

Apply through an agent

An education agent can support you throughout the application process and answer your questions about ANU. They can also upload your supporting documentation and submit your application on your behalf.

[Find an agent](#)

Apply directly to ANU

You can apply directly to the University by creating an account in the ANU postgraduate application portal. Upload your details and follow the prompts to navigate your way through each step. You can log out and go back to your application at any time before you submit it.

[Go to the ANU application portal](#)



Find your degree

Browse our coursework and research degrees and discover GPA, prerequisite subject and any other admissions requirements that you'll need to meet before you apply.

[Search programs and courses](#)

Talk to us

The members of our Future Student Experience team can answer any questions you have about our degrees and the application process. If they can't help, they'll put you in touch with the people in our colleges who can.

[Talk to ANU](#)

Application dates 2024

Semester 1

14 March–15 December 2023

Semester 2

1 June 2023–15 May 2024

Application dates 2025

Semester 1

March–December 2024

Semester 2

June 2024–May 2025

Higher degrees by research (HDR) applicants

Find a supervisor at ANU before you apply. When we receive your application, we'll automatically consider you for a scholarship.

Admission requirements

To study a higher degree by research at ANU, you must have one of the following:

- an Australian bachelor's degree with at least second-class honours, or the international equivalent[^]
- another degree with a significant research/thesis component
- a combination of qualifications, research publications and/or professional experience related to your field of study.

Before you apply, you must also have the approval of a supervisor and/or one of our colleges.

Your application should include:

- a short, draft research proposal
- a list of three referees and their contact details
- original and translated copies of your supporting documents, such as academic transcripts and graduation certificates.

[^] Some programs may require upper first-class honours.

Find a supervisor

Finding the right supervisor is the first step of your higher degree by research journey. Your supervisor will guide you throughout your research program.

Applying for a PhD or MPhil is a bit like applying for a job, so it's a good idea to approach your supervisor in a professional manner. Take the time to explore their research and publications before you get in touch. Write a brief email introducing yourself and why you will be a good fit as an HDR candidate in their research area.

Researchers at ANU belong to one of the seven academic colleges. Start by exploring the ones in the college whose disciplines are most relevant to you. You may find that more than one college can offer you supervision in your study area.

You need the approval of a potential supervisor and the endorsement of their college before you can apply. Colleges and supervisors may also have their own application processes.

Learn more about HDR admission

Follow the steps

Explore research areas

We are a research-intensive university and our research priorities reflect the challenges facing the world today.

Discover research areas

Talk to an ANU college

College staff assess HDR applications and will rank yours against other candidates. If they endorse you, they will automatically consider you for a scholarship.

Discover the application process for your research area

How to apply

Apply through the ANU postgraduate application portal at any time of the year. Make sure that you do this within the deadline of any scholarships you may be considering.

We take 6–8 weeks to assess applications. This could take longer if we're also considering you for a scholarship.

You need to apply for accommodation separately. Learn more on page 12.

Start your research application

Log in to the ANU application portal. It's free! Once you register, you can log out and go back to your application at any time.

[Go to the ANU application portal](#)

Find your degree

Browse our coursework and research degrees and discover GPA, prerequisite subject and any other admissions requirements you'll need to meet before you apply.

[Search programs and courses](#)

Contact the Graduate Research Office

We can help you with any queries you have about the status of your application or connect you to your college or research area.

Email: gro@anu.edu.au
Phone: +61 2 6125 5777

All applicants

Other admission requirements

Before you can study a coursework or higher degree at ANU and in Australia, you will need to organise the following:

Proof of language ability

You need to show that you meet our English language requirements. We accept several English tests as evidence of this, including IELTS, PTE Academic and TOEFL and some high school qualifications completed in English.

[Learn more about our English requirements](#)

Overseas student health cover (OSHC)

Once you have accepted your offer, organise your Overseas Student Health Cover. This is a mandatory requirement of your student visa (unless your home country has a Reciprocal Health Care Agreement with Australia).

Your OSHC will cover the costs of visits to the doctor, some hospital treatment, ambulance services and some pharmaceuticals (medicines) while you are studying in Australia.

[Learn more about OSHC](#)

Student visa

After you receive confirmation of your enrolment and before you arrive in Australia to study, you will need to apply for, and be granted, a student visa. This is likely to be a subclass 500 student visa.

All visas are subject to conditions and you must ensure that you comply with these at all times. You must also have a valid passport for the duration of your studies.

[Explore visa requirements](#)



Australian
National
University

Postgraduate International Student Guide 2024/25