

Chung-Ang University

Chung-Ang University

Leader for New
Normal

CAU

Leader for New Normal ————— CAU

The Age of Transformation, A New Standard

Chung-Ang University(CAU) is creating a new standard leading the Fourth Industrial Revolution with its century-long history and traditions.



CONTENTS

CAU Philosophy

- 04 Education Philosophy
- 05 CAU2030
- 06 History
- 08 President's Message
- 09 Director's Message

Leader for New Normal

- 10 Artificial Intelligence (AI)
- 16 System Semiconductor and Intelligence Energy
- 22 Bio and Healthcare
- 26 Art Engineering
- 30 Production of ESG Leaders
- 32 A University that Facilitates Student Growth

CAU, a Research-driven University

- 34 CAU, a Research-centered University
- 36 SRC&ERC Leading Research Center
- 38 BK21+ Future Talent Development Project Group / BK21+ Innovative Talent Development Project Group / Basic Research Center Support Projects

CAU Courses

- 40 College Courses
- 44 Postgraduate Courses

CAU, Developing Da Vinci-style Talents

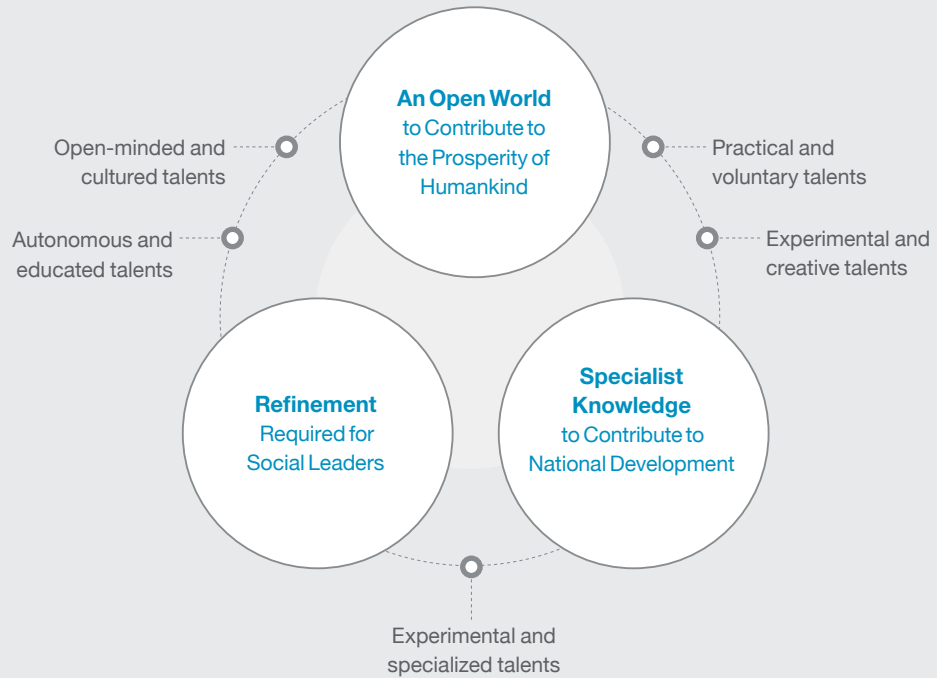
- 47 Advanced Education System
- 48 Da Vinci Learning / Multi-Major System / Flexible Semester System
- 49 Da Vinci Learning Innovation Center / Da Vinci Human Resource Development Center
- 50 Da Vinci Startup Support Group / LINC 3.0 Project / CAU Startup Support Program
- 51 CAU Campus Town
- 52 Sports Groups
- 53 Student Support
- 54 International Exchange Program
- 56 Chung-Ang University Hospital and Affiliated Institutions



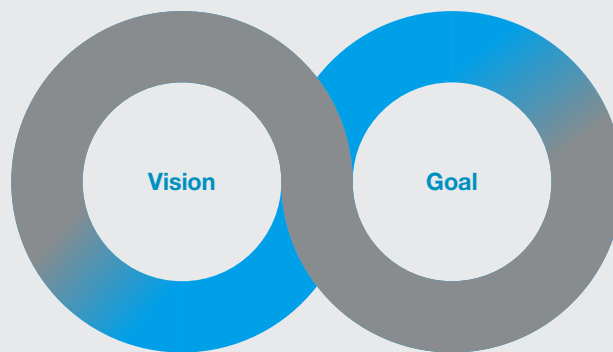
Education Philosophy — Die for Justice, Live for Truth

Chung-Ang University’s education philosophy laid its foundation in the spirit of justice and truth, which refers to the development of talents who may seek truth, realize social justice through practical participation, and contribute to the prosperity of the nation and humankind.

Education Goal



Education Goal



A University with World-Class Knowledge and Learning Capabilities

A University Sought After by Students around the world in 2030

- Developing global talents opted by the society
- Developing three global research groups
- Creating the best environment for education and research

Strategy

The Creative Talents of Chung-Ang Contributing to Humankind

The Global Creative Leader, CAU

3ON
(Triple-ON)



Focused development of the Core research group

Establishment of a research cooperative activation model

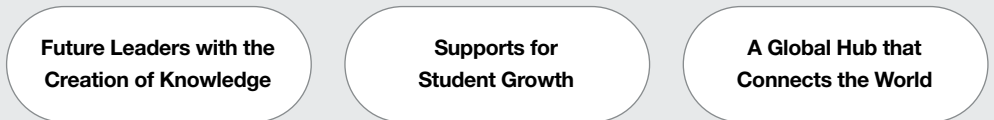
Innovation of a future-based education course

Student-oriented educational system innovation

Establishment of a global campus

Goals

2030, Global Top Tier University



CAU Way



Spearhead the future of higher education based on the spirit of innovation as the entity that practices the goals of CAU2030

Chung-Ang with Justice and Truth Creating the History of Innovation

Chung-Ang University, an institution with over a century's worth of history, practices the spirit of truth and justice and proposes visions for the nation. Chung-Ang University also proposes a new vision for AI that is essential for the world in the wake of the pandemic.



- 1916** Established Chung-Ang Kindergarten(Jeongdong First Methodist Church branch)
- 1918** Gained independence as Chung-Ang Kindergarten, an individual, national, educational institution
- 1922** Established an early childhood education department
- 1928** Gained license to establish Chung-Ang Early Childhood Development Department
- 1937** Completed the first new building, Young-shin Hall
- 1938** Moved Chung-Ang Early Childhood Education School to Heukseok-dong
- 1945** Established school anthem and motto
Reopened Chung-Ang Early Childhood Development School
Reorganized into Chung-Ang Women's Vocational School

- 1947** Established Chung-Ang Cultural Academy foundation school
Renamed to Chung-Ang Women's College
Established Chungdae News
- 1948** Name changed to Chung-Ang University
- 1950** The 2nd bachelor's conferment of the degree ceremony
- 1951** Opened a temporary campus in Busan and established the Yi-ri campus
- 1952** Opened Seoul campus
- 1953** Acquired the license to establish 'Chung-Ang University'
- 1959** Completed construction of the Chung-Ang Library



110
FROM



- 1960** Death of six students during the April 19 Revolution
- 1968** Held the unveiling ceremony of the Blue Dragon Awards
- 1972** Acquired school foundation of Seorabeol School of Arts
- 1980** Opened Anseong Campus
- 1987** Joined the Soorim Foundation with the university's management
Championed various competitions, including the university basketball league
- 1992** Hosted Pan-Chung-Ang Festival
- 1995** Completed the construction of Su-Rim Science Hall



- 2002** Establishment and announcement of a new, university identity(UI)
- 2008** Doosan Group joins the Chung-Ang University management
Announcement of CAU2018⁺
- 2010** Completed construction of Blue Mir Hall
- 2011** Completed construction of the College of Medicine and R&D Center
Merged the main and branch campuses, merged with the Red Cross College of Nursing
- 2016** Completed construction of the Centennial Hall
- 2018** Announced CAU2030

- 2020** Dr. Park Sang-gue appointed as the 16th president
- 2021** Establishment of advanced departments in undergraduate courses(Department of AI, Department of Advanced Material Engineering)
Opened the 'CAU e-Advisor' AI-based education support system
Opened the Da Vinci AI Postgraduate School
Launched the 2030 Carbon Neutrality ESG Share Forum
Acquired a five-year-long three-year periodic university institutional assessment certificate
- 2022** Celebrated the 106th anniversary of the establishment
Established Da Vinci Virtuallege



Chung-Ang, Leading the Post-Pandemic Age

Chung-Ang University focuses on the fundamental values of research and education amid the changing environment of universities, such as digital transformation, acceleration of hyperconnectivity, reorganization of global governance, etc. In addition, we prioritize 'digital servitization innovation,' which combines education with digital technology, and strive to achieve this.

At Chung-Ang University, we are committed to fulfilling our social responsibilities as a university, going beyond its advancement. To this end, we will become the central university leading domestic and international carbon neutrality technology based on the 2030 Carbon Neutrality ESG Share Forum.

We humbly request your warm interest and support in our endeavors to create new technologies and values that will lead our future.



President of
Chung-Ang University

Park Sang-gue

박상규

When the foundation of education falls,
the future of humankind and the nation
will plunge into darkness.

We believe that a university's responsibility lies within itself.

A university's competitiveness is equivalent to the country's
competitiveness,
and honest competition between nations
becomes the source of a better and more prosperous future.
With this idea in mind, Chung-Ang University will
continue to evolve.

Chung-Ang University will continue to strive
to become a wholesome university that fulfills its social
responsibilities
based on its potential and creativity.

Chung-Ang, Fulfilling its Social Responsibilities with Potential and Creativity



Director of Chung-
Ang University

Park Yong-hyun

박영현

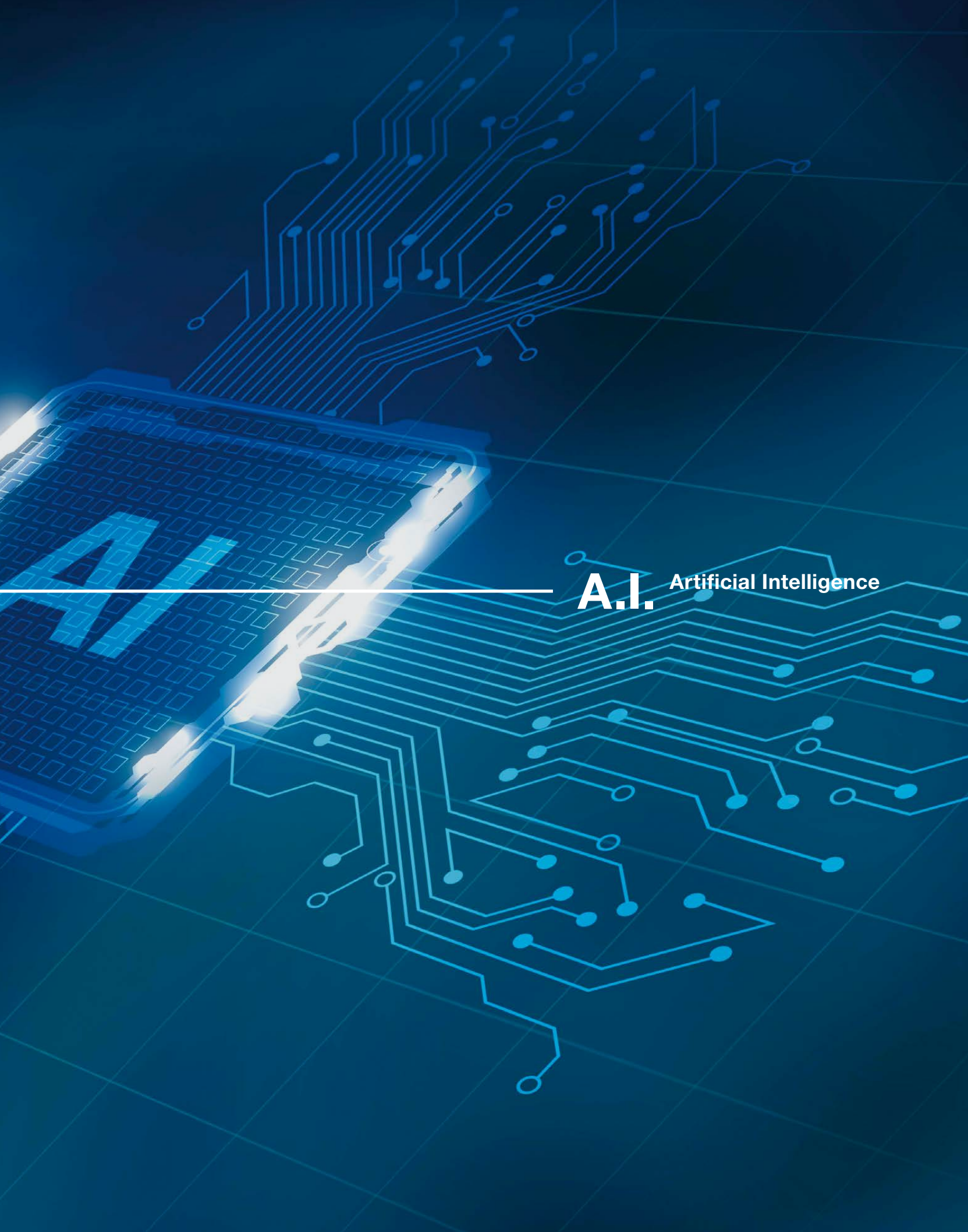
Leader for New Normal ————— A.I.

A hand is shown from the left, pointing its index finger towards the right. In the background, a glowing laptop keyboard is visible, and a blue circuit board pattern is overlaid on the scene. The overall color scheme is dark blue with white and light blue highlights.

Leader for New Normal

Leading the Future Society with Outstanding AI Literacy

At Chung-Ang University, we connect AI technology to various aspects of education, research, and student life. We are also integrating AI into graduate and postgraduate courses, pioneering the field of the future of education while inviting related industries to share AI research and education broadly.



A.I. Artificial Intelligence

Converging AI Technology to Complete the AI Campus

A Systematically Prepared AI Campus


Chung-Ang University is one of the most well-prepared universities in the field of AI. We have established an AI Committee to seek out detailed ways to converge AI with education. For instance, we opened an AI academy for specialized AI education and an AI Joint Research Center for academy–industry cooperation in preparation for building an AI campus. These have helped Chung-Ang University make firmer strides in the field of AI.

Selected for the Support Project for a Software (SW)–Focused University

Thanks to its selection as a beneficiary of the ‘SW-centered university project,’ Chung-Ang University expanded its SW elective units, breaking the stereotype that SW is only for students majoring in computer engineering. At Chung-Ang University, we are raising the AI literacy of our students by providing coding(programming) education regardless of their major and advocating for the application of that knowledge in their own fields to solve problems.

Artificial Intelligence





At Chung-Ang University, we established an 'AI+X Education System' that applies AI to all faculties of education, creating an AI-based Cognitive Campus.

Independent College of Software (Department of AI and Department of SW)

Chung-Ang University operates independent colleges that specialize in software studies. The University opened an undergraduate course in the Department of Software for the second time in 1972 and a postgraduate course in 1977 for the first time in Korea. Even now, the College of Software offers students global-level software theory and practical education.

Opening of the Age of the 'Da Vinci AI Postgraduate College'

Chung-Ang University was selected for the AI University Support Program hosted by the Ministry of Science and ICT and opened the Da Vinci AI Postgraduate College, thereby opening the door to developing global-level AI specialists. By 2025, the Da Vinci AI Postgraduate College aims to secure 50 students in MA and PhD programs as well as 18 dedicated faculty staff, developing the pride of being a nationally backed-up AI postgraduate school. The college also operates the Da Vinci AI Joint Research Center for academy-industry cooperation along with the Da Vinci AI Academy, which aims to educate all students in the university on AI knowledge.

Operation of the National Security AI Education College

Chung-Ang University opened the '2022 Chung-Ang University National Defense AI Education College – Defense Force Specialized AI System & Key Human Resource Course.' This education course is a part of the 'Servicemen AI & Software competency enhancement business' carried out by the Ministry of Science and ICT, and the Ministry of National Defense aims to develop specialists to lead innovations in the digital national defense field.

Operation of the only AI Humanities Research Institute in Korea

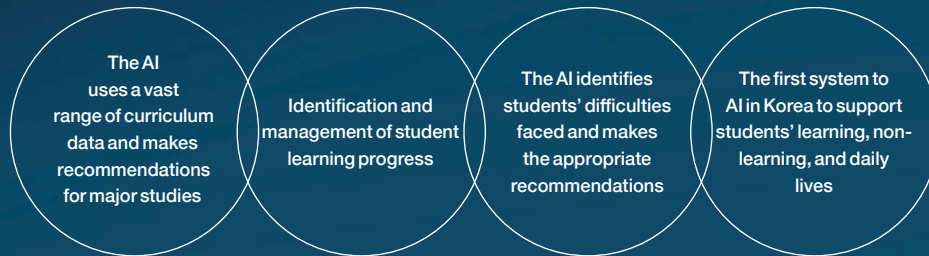
Chung-Ang University is the only university in Korea that researches AI through the eyes of the humanities. The 'Humanities Research Institute, Chung-Ang University' receives the support of the (HK+ project) of the National Research Foundation of Korea and is a global research center that studies 'AI humanities.' The institute signed a memorandum of understanding(MOU) with 'The AI,' media that specializes in AI to cooperate in joint research and advises humanities and convergence studies while actively participating in academic and trend-sharing activities.

Nurturing Excellent AI Generation with AI-Integrated Student Competency Growth System



CAU e-Advisor

The 'e-Advisor' is the only university student growth system in Korea based on AI. This support system developed by Chung-Ang University is comparable to the e-Advisor of Arizona University, which is regarded as one of the most advanced and innovative universities in the United States. CAU's e-Advisor, however, is more accessible as it provides all curriculum support online without requiring face-to-face meetings.



Rainbow System

The Rainbow System is a career development system that offers integrated employment management, startup, and further studies for students. The students of Chung-Ang University may manage their career plans and build work experience through this system that comprises vision, career selection, competency development, employment support, social media networks, consultation, community, etc.

CHARLI the Chatbot

A 'Chatbot' refers to a computer program or AI that provides text or voice talks. At Chung-Ang University, we introduced CHARLI the AI chatbot, which can offer answers to various inquiries. CHARLI can answer complicated questions, learn independently, and is available for 24 hours with Internet access.



AI Talent-cultivating Curriculum

At Chung-Ang University, we run the Department of AI, a postgraduate school, and the AI Joint Research Institute to lead AI education. Furthermore, all students are required to take AI elective subjects from their first year so they may be equipped with AI competency. At Chung-Ang University, students will grow into leaders who can pioneer the age of AI.

Da Vinci AI Academy

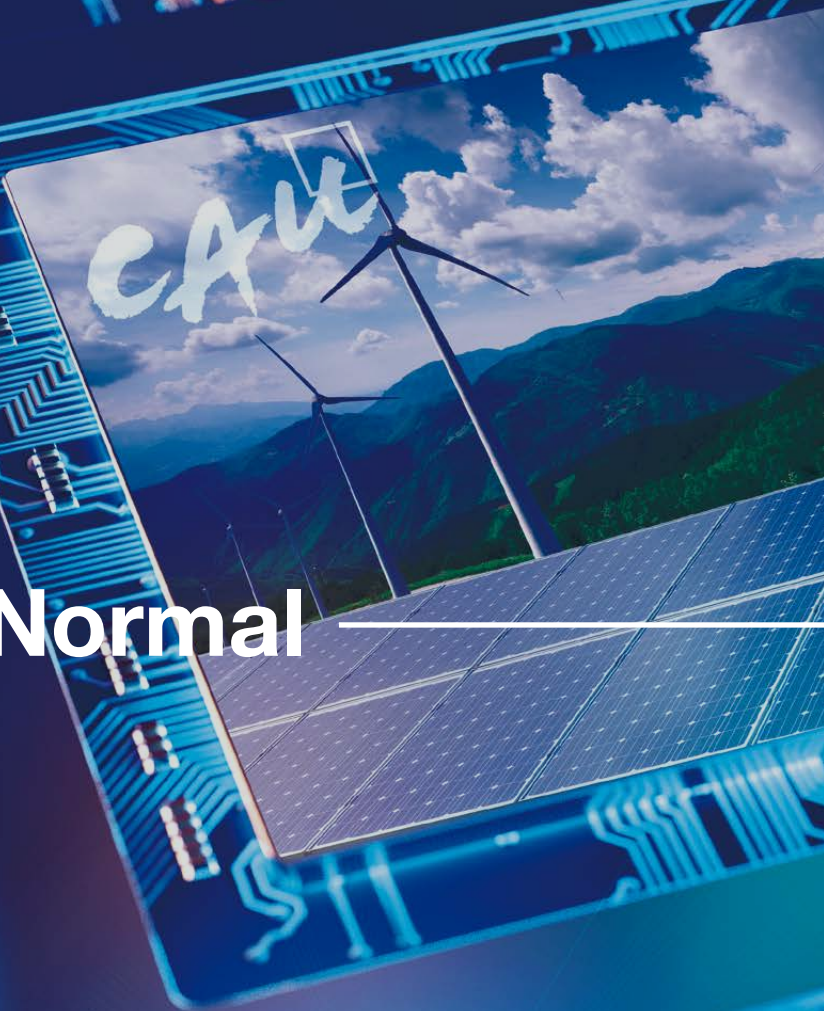
The Da Vinci AI Academy offers various educational AI programs by opening mandatory AI elective units for all students at Chung-Ang University.

Da Vinci AI Joint Research Institute

The Da Vinci AI Joint Research Institute hosts and conducts AI projects within the university. Professors and academy-industry cooperation specialists identify advanced AI research topics and develop these ideas, expanding upon advanced problem-solving-based AI research activities.

Leader for New Normal — System Semiconductors and Intelligent Energy

Leader for New Normal





System Semiconductor and Intelligence Energy

Innovating the Next Wave of the Korean Industry

Chung-Ang University has developed specialists in system semiconductors, one of the most sorted out fields as an innovative, next-generation industry in Korea. We have also been selected for the 'Intelligent Energy Industry Convergence Graduate School' project based on next-generation semiconductor technology, spurring our efforts in the development of high-quality talents in the energy industry.

Enhancing Korea's Prowess in the Semiconductor Industry for the New Growth Engine

The system semiconductor industry takes up to 80% of the global semiconductor market and is also known as the brain of electronic devices. At Chung-Ang University, we are enhancing system semiconductor technologies that are being recognized, supported, and developed on a national level as a new growth engine.



Host Institution of System Semiconductor Convergence Specialist Development Project

Chung-Ang University has been selected as the host institution of the 'System Semiconductor Convergence Specialist Development Project' by the Ministry of Science and ICT and is developing related talents in the best environment with a total of KRW 9.6 billion in funding from the government until 2026.

Next-gen System Semiconductors Design Specialist Development Project

Chung-Ang University is one of the universities participating in the 'Next-gen System Semiconductors Design Specialist Development Project' hosted by the Ministry of Trade, Industry and Energy and is leading the field. In this project that develops R&D practical system semiconductors chip-design specialists, Chung-Ang University focuses on developing system semiconductor specialists in Internet of Things(IoT) and robot technology.

Selected in the system semiconductor field of Digital Innovation Sharing university

Chung-Ang University was selected in the system semiconductor category in the Digital Innovation Sharing University Project hosted by the Ministry of Education, thereby developing a future generation of leaders. The university was also selected in the project's Immersive Media category, which makes it one of the rare eight universities selected for more than two categories. Chung-Ang University links the previously selected financial support projects, such as system semiconductor projects and creative-convergence engineering talent projects, etc., enhancing its educational courses in each next-generation semiconductor field, such as material, design, circuits, etc.

System Semiconductor

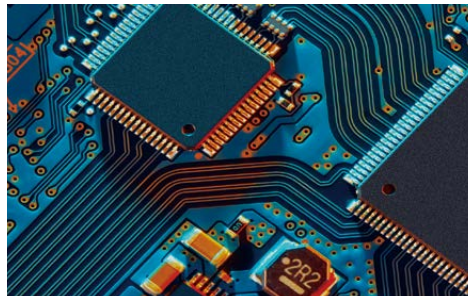
The Budget for System Semiconductor Convergence Specialists Development Support

9.6 KRW billion

Digital Innovation Sharing University System Semiconductor Project Budget

6.12 KRW billion

*For six years



Chung-Ang University attracted the 'Phase 4 BK21 Intelligent Energy Industry Education Research Group' and was selected for the Intelligence Energy Industry Convergence Postgraduate College establishment project, leading the field of future of intelligence energy.

Ushering Carbon Neutrality in with the Intelligent Energy Technology Based on the System Semiconductor



Establishment of Intelligence Energy Industry Convergence Postgraduate College

At Chung-Ang University, we develop energy innovators to lead the age of the Green New Deal and carbon neutrality, and we were selected for the Intelligence Energy Industry Convergence Postgraduate College establishment project by the Ministry of Trade, Industry and Energy. We offer postgraduate college courses that combine intelligent information technology for energy and provide academy–industry cooperative courses. Based on this, we carry out practice research activities connected to the industry’s demand.

iEoT System Semiconductor Center

iEoT System Semiconductor Center established by Chung-Ang University looks into ways to efficiently operate all energy sources, including key technologies of the Fourth Industrial Technology such as AI, Big Data, IoT, e-Mobility, etc., under the leadership of Chung-Ang University with other universities, relevant enterprises, and research centers.

AI Based Smart Energy



Budget for Energy Convergence Postgraduate School support

4.6 KRW billion

~until 2025
(Ministry of Trade, Industry and Energy)

Intelligent Energy-of-Things(iEoT) System Semiconductor Center

iEoT Network

Six universities with Chung-Ang University +
37 enterprises + 5 research centers

Leader for New Normal ————— Bio and Healthcare

Leader for New Normal —————





Bio and Healthcare

Converging and Collaborating to Lead the Future of the Bio and Healthcare Scene

The best college of pharmacy that has been leading Korea's pharmacy education since 1953; a biotechnology college that heralded the beginning of the Korean biotechnology industry in 1963; a College of Medicine that was opened in 1971 for the development of true medical professionals ever since; the Red Cross College of Nursing established in 1974 and merged in 2011 to offer the largest college size in Korea; the Chung-Ang University Hospital that opened in 1968 and puts people before diseases; we added a next-generation smart medical system and opened the Chung-Ang University Gwangmyeong Hospital in 2022— these are only some of the reasons why Chung-Ang University is at the center of the bio and healthcare industry of the future.

CAU BT and Healthcare the Technology of Healing and the Growth Engine of Chung-Ang for Humankind

Chung-Ang University's Bio and Healthcare competency brings smart innovation with the Fourth Industrial Revolution.

The CAU System that combines research, education, and clinical trials creates synergies.

Bio and Health care



Large-scale research, education, and clinical trial system

CAU Bio and Healthcare

Chung-Ang University boasts high competitiveness in the field of bio and healthcare. The top college for medicine, pharmacy, nursing, natural science, and biotechnology all converge and join forces for research efforts. In addition, the Doosan Group participates in the management of the university, bringing innovation to the infrastructure thanks to investment in facilities, raising the university's competitive edge.

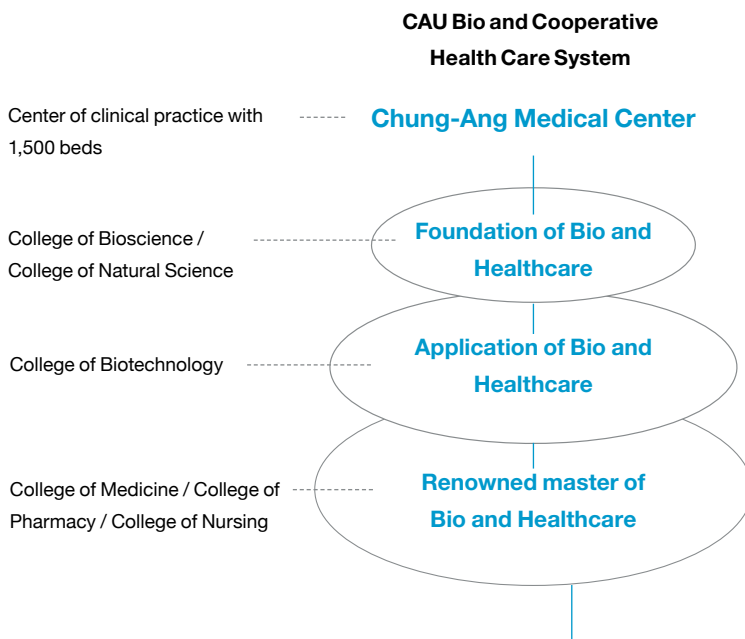
Chung-Ang Medical Centers for Clinical Treatments

Chung-Ang University Hospital and Chung-Ang University Gwangmyeong Hospital

The Chung-Ang University Hospital and Chung-Ang University Gwangmyeong Hospital, two hospitals under the umbrella of Chung-Ang Medical Centers, are the bases of clinical treatments where the Chung-Ang University College of Medicine, College of Pharmacy, College of Natural Sciences, College of Biotechnology & Natural Resource, College of Nursing, etc. all come together to collaborate. Opened in 1968, Chung-Ang University Hospital was ranked in the top 10 list of Korean hospitals in the '2022 international hospital ranking' by Newsweek in the United States. The Chung-Ang University Gwangmyeong Hospital, which opened in March 2022, is also the first university hospital in Gwangmyeong-si and the southwestern region of the metropolitan area that combines AI technologies. It offers a total floor area of 96,987.39m², with 8 basement floors and 14 floors above the ground, as well as around 700 beds.

**Hub for Developing Food and Pharmacy Talents
Talent Development Project for Regulatory Science**

Chung-Ang University was selected in the 'Food Safety' category and 'Pharmaceuticals Production and Quality Assessment' category in the 'Regulatory Science Talent Development Project.' Regulatory science is a branch of science where food, pharmaceutical, medical devices, etc., are assessed for their safety, validity, quality, performance, etc. Chung-Ang University has been selected for the talent development university for food safety assessment and plans to receive KRW 2.8 billion worth of the national subsidy for five years from 2021 and produce about 120 MA and PhD specialists. In 2022, the university was also selected as the new support institution for the regulatory science talent development project and to serve as the hub for producing core talents of pharmaceutical production and quality assessment. Chung-Ang University will establish the 'Department of Regulatory Pharmacy' in the postgraduate school during the first semester of 2023 to carry out the project. Over 22 professors from the Department of Global Innovative Pharmacy, Department of Advanced Statistics, Department of Law, etc. will join the new department's faculty, which will produce more than 88 MA and PhD graduates during the project period.



Leader for New Normal ——— Art Engineering

Leader for New Normal



The background is a vibrant, futuristic digital landscape. It features a dark blue and black space filled with numerous glowing, multi-colored lines (red, green, blue, purple) that resemble data streams or fiber optic paths. These lines are scattered across the scene, some appearing as long, straight streaks while others are more fragmented. In the upper right, there are several horizontal, glowing white and cyan bars that look like light fixtures or data indicators. The overall effect is one of high-tech, digital connectivity and innovation.

Creating New Content by Converging Art with Technology

The Information and Communications Technologies (ICT)-based convergence age requires creative talents capable of solving various problems, and the same goes for art. Chung-Ang University is creating new content and software that transcend conventional limitations by combining art with technology. We are creating a new world of art technology by overcoming technical limitations with creative ideas.

Art Engineering

Chung-Ang University leads K-culture.
As technology and art share the same source
word, we present a new world of art and the
frontier of current technology.

Converging Art and Technology to Open a New World of Art



Art Engineering

Chung-Ang University, Leading the Korean Art Scene

Chung-Ang University is a leading force in traditional, performing, video, and visual arts in Korea. Artists who have graduated from our university bring Korean content to the world and lead the art scene. Adding to the conventional sentiments of art, we combine engineering technologies to diversify Chung-Ang's content.

Digital Innovation Sharing University Project Immersive Media Support

61.2 billion

*For six years

Advanced media led by Chung-Ang University

PhD 268 persons

Master of Arts(MA) / Masters in Production 1,915 persons

Graduates of Advanced Image Postgraduate College(As of March 2022)



An Advanced Image of Postgraduate College

The only college operating the BK21 Project Group in Korea

The Advanced Image Postgraduate College was established in 1999 as the university was selected for phase 1 of the Brain Korea 21(BK21) specialization postgraduate college support project. It converges technology to image art up to phase 4; Chung-Ang's Advanced Image Postgraduate College is the only one of its kind in Korea in the phase 4 image field.

AI-Content Future Industry Education Research Group

The AI-Content Future Industry Education Research Group is selected for the phase 4 BK21 project and actively combines AI with art. With their top performance results in the future content industry, they advance Chung-Ang's international competitiveness by adding the artistic sentiment of Chung-Ang and AI-based technology.

College of Art & Technology

Chung-Ang University is home to the College of Art & Technology, where creative technical directors are equipped with convergent software development and application capabilities for various creative industries, including film, gaming, performance art, animation, etc. To produce global talents, the college offers most of its lectures in English.

Innovative Sharing University – Immersive Media Project

Chung-Ang University was selected as an Innovative Sharing University – Immersive Media Project, a key national future industry support project. Through this, we can converge new digital technologies such as augmented reality(AR), virtual reality(VR), extended reality(XR), human-computer interaction(HCI), user experience(UX), and the Metaverse to various fields of study, developing global key immersive media talents.

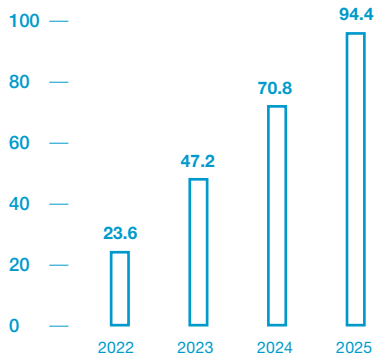
Developing the Next Generation of Leaders that Fulfill Their Social Responsibilities

Chung-Ang University produces experts capable of fulfilling ESG. In an age where international ESG standards are forming, Chung-Ang University strives to fulfill its social responsibility by producing experts who are a step ahead of the trend.

Leader for New Normal



Carbon Neutrality Leader Research Group's research expenses
(Unit: KRW 100 million)



Carbon Neutrality ESG Share Forum

Chung-Ang University launched the '2030 Carbon Neutrality ESG Share Forum' to propose new issues and policies for the new era. This forum aims to collect Chung-Ang University's research capabilities to help humankind shorten carbon neutrality by over 20 years for the sustainability of our existence.

MISSION	Early Achievement of Carbon Neutrality and Leading Relevant Industries
----------------	--

Carbon Neutrality Digital Innovation Platform Research Institute

The Carbon Neutrality Digital Innovation Platform Research Institute is launched by Chung-Ang University, Korea Hydro & Nuclear Power, LH, and Doosan Enerbility. The four institutions aim to take a preemptive response to the climate crisis by linking the domestic and international carbon neutrality industry and nanotechnology governance's category platforms. This institute is differentiated from the existing ones as it proposes practical strategies and solutions based on intelligent analysis and forecasts beyond the ESG limitations of general business management perspectives.

Production of ESG Leaders



Carbon Neutrality ESG Future Practical Issue Research Institute

Chung-Ang University has been selected for the '2022 On-site Future Leadership Development Support Project' sponsored by the Ministry of Science and ICT and the National Research Foundation of Korea. The university formed a consortium with Seoul National University(SNU), Sookmyung Women's University, Inha University, and Hanyang University and oversaw the project. With this project, the institute secured over KRW 2.36 billion annual funds as well as a total of KRW 9.44 billion funds until December 2025 and will lead the development of future talents.



Carbon Neutrality ESG Chief Executive Officer(CEO) Course

Chung-Ang University signed an MOU with DR & AJU, a law firm, to develop CEOs capable of realizing early carbon neutrality and expand ESG management. To this end, the university opened a carbon neutrality ESG CEO course; this is the first one of its kind in the world. The course plans to establish practical subjects, considering that it requires engineering approaches and technological advancement.

Leader for New Normal

A University that Facilitates Student Growth

Aiming for 'Student Growth' rather than 'Student Development'

At Chung-Ang University, we strive to provide all the necessary support, so our students grow further even after their success. Our vision combines with our students' visions to grow together and create the best performances.

Leader for New Normal



Employment rate

71.3%

Top ranking in the employment rate among major universities within the Seoul region

*As of December 31, 2020, for Seoul Campus

Top Employment Rate

Chung-Ang University reached a graduate employment rate of 71.3%, solidifying its employment competitiveness among key universities in the Seoul region. In the employment rate retention category, the university recorded higher figures than the previous year (86.6% and 85.4% for the 3rd and 4th phases). Chung-Ang University operates the Da Vinci Human Resource Development Center, a specialized branch for employment support. The institute offers an annual, alumni-invited CAU Job Expo, International employment presentation, on/offline mentoring, etc.

* Retained employment rate: An indicator of how long you have worked after getting a job(3rd phase: 9 months / 4th phase: 11months or more)

A University that Facilitates Student Growth

Number 3 in CPA Production for Two Consecutive Years

Chung-Ang University produced over 106 new CPAs in 2021 for the 56th Certified Public Accountant(CPA) Examination and solidified its position as one of the top three Korean universities for two consecutive years.

Various Public Examination Classes

Chung-Ang University offers various public examination classes for the press, administrative legislation, CPA, law school, teacher licenses, etc. Students who meet the entry requirements may focus on their studies with rich support.

Number of students who passed the CPA exam

in Korea

3rd

*For two consecutive years (2020 and 2021)

The 56th CPA Exam

CPA

106_{persons}

*2021

Passed the Teacher Certification Exam

116_{persons}

Middle and kindergarten teacher certification exam(2022)

CAU, a Research-driven University

CAU R&D

CAU, a Research-centered University

Creating PhD-level Research Talents who Leap Forward as Global Leaders in the Research Field

The competitiveness of a university comes from its search system. Chung-Ang University creates a collaborative platform as a partner to local communities and global enterprises. The engineering college's potential, in particular, is exploding, and the number of orders for research activities is rapidly increasing. Based on this, we are creating a virtuous cycle of connecting research with quality education.





For the past three years(August 2020–2022) of key financial support program(talent development and research tasks) order performance



Source of research funding data: <http://news.unn.net/news/articleView.html?idxno=231806>

SRC&ERC

Leading Research Center

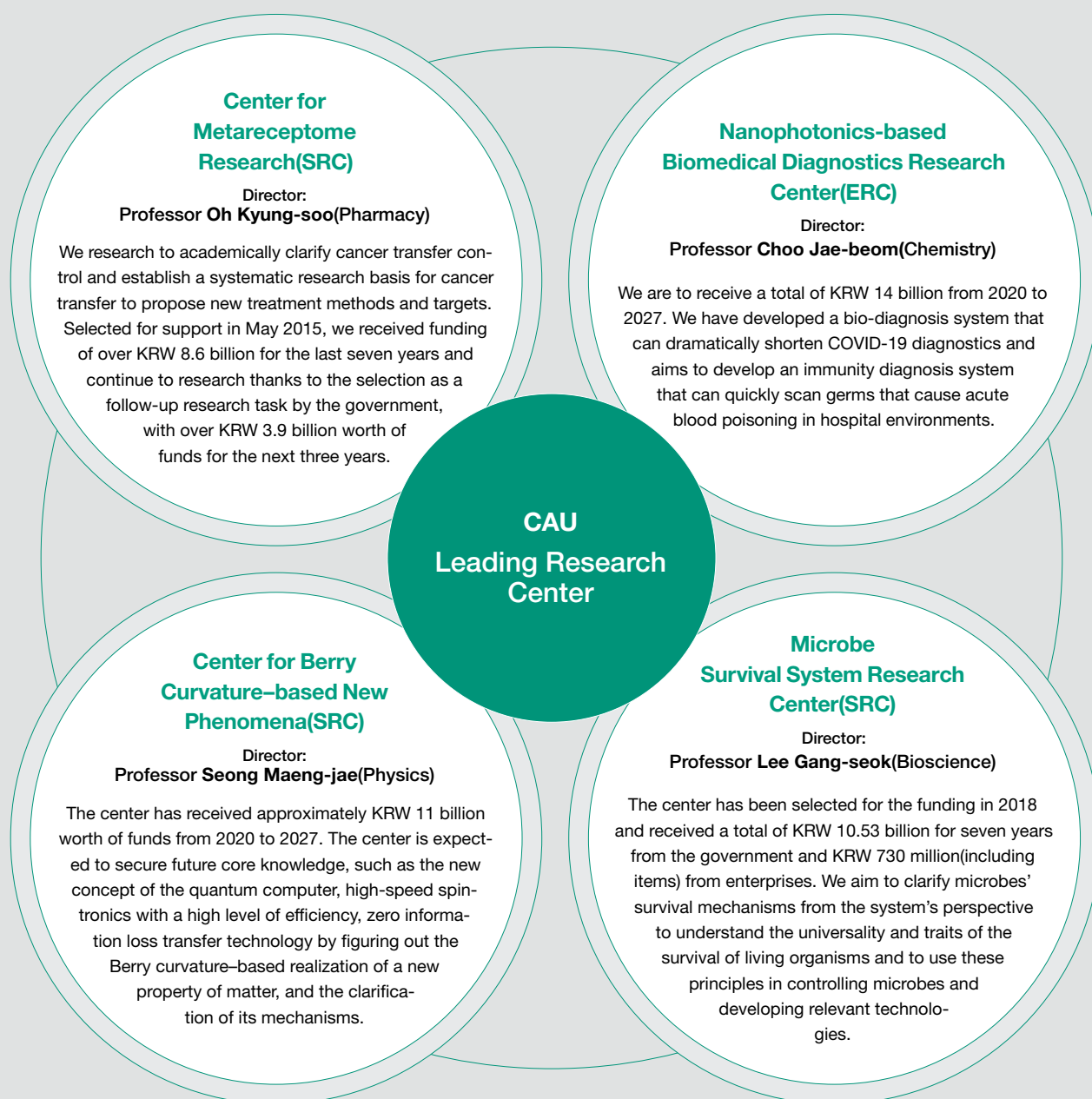
Developing World-class Research Capabilities through the Leading Research Center

The “Leading Research Center” project is one of the projects that created the current national scientific prowess by dramatically improving the research environment in Korea. At Chung-Ang University, we operate four Leading Research Centers, and each center boasts global-level research performances.



Support Programs for Science/ Engineering Research Centers

The Science/Engineering Research Center (SRC/ERC) project hosted by the Ministry of Science and ICT is a long-running, government-funded project that began in 1990 and is aimed at developing core research areas with global competitiveness by funding research activities for outstanding research groups and enhancing national basic research capabilities to produce creative and convergent talents. It is categorized into *SRC (Science), *ERC (Engineering), and MRC (Medical).



BK21+ Future Talent Development Project Group

The nine selected research groups(teams) spread across engineering, science, art, and the humanities, showing Chung-Ang's research prowess.

AI-Content Future Industry Education Research Group

Leader:
Professor Park Jin-wan
(Imaging Science and Arts)

Life Science Human Resources Training Center

Leader:
Professor Rhee Sang-myung
(Biological Sciences)

Global Fourth Industrial Revolution Leadership Development for the Animal Resource Project Group

Leader:
Professor Ryu Buom-yong
(Animal Biotechnology)

Work and Society 4.0: Education and Research Platform for the Age-Reconciliation of the Asia Education Research Team

Leader:
Professor Kim Kyo-seong
(Social Welfare)

Optics and Biophysics Chemistry Creative Talent Development Team

Leader:
Professor Sung Jae-young
(Chemistry)

Problem-Solving Engagement Education Expert Development Team

Leader:
Professor Song Hae-deok
(Education)

Future Chemical Engineering Talent Education Research Team

Leader:
Professor Lee Jong-hwi
(Chemical Engineering and
Materials Science)

Quasiparticle and Basic Particle Physics Research Team

Leader:
Professor Lee Sang-kwon
(Physics)

Future Convergent System Microbe Studies Education Research Team

Leader:
Professor Cha Chang-jun
(Systems Biotechnology)

BK21+ Innovative Talent Development Project Group

These are the six groups selected for this project, which is aimed at enhancing competitiveness in the new industry as well as convergent research talents, identifying new academic and industrial areas, and raising Chung-Ang's research competency.

<p>Intelligent Energy Industry Education Research Group</p> <p>Leader: Professor Park Se-hyun (Electrical and Electronics Engineering)</p>	<p>Global Innovative New Pharmacy Talent Development Education Group</p> <p>Leader: Professor Oh Kyung-taek (Global Innovative New Pharmacy)</p>	<p>Intelligent Wearable Robot Education Research Group</p> <p>Leader: Professor Chang Seung-hwan (Mechanical Engineering)</p>
<p>Cyber-Physical System Cleansing Research Group</p> <p>Leader: Professor Chang Hang-bae (Industrial Security)</p>	<p>Big Data Innovative Talent Development Group</p> <p>Leader: Professor Cho Sung-rae (Software)</p>	<p>SURE Education Research Center</p> <p>Leader: Professor Cho Yoon-ho (Social Infrastructure System Engineering)</p>

Basic Research Center Support Projects

A research team by Professor Park Jong-pil and Professor Lee Sang-min is selected for the '2021 Basic Research Lab Tasks,' carried out to develop and support small research groups by the Ministry of Science and ICT, proving the university's competitive edge in small-scale labs.

<p>Targeted Diagnostics for Chronic Bowel Diseases and Nano-Biogenic Precision Control Lab</p> <p>Chief researcher: Professor Park Jong-pil (Food Science and Technology)</p> <p>We aim to develop an integrated platform technology that offers precision control over chronic bowel diseases to contribute to the treatment of inflammatory bowel diseases, such as Crohn's disease, that cause great social and personal pains and losses.</p>	<p>Zero-power Physical Enhancement Basic Research Lab</p> <p>Chief researcher: Professor Lee Sang-min (Mechanical Engineering)</p> <p>The research aims to develop human energy recovery technology that can relay and store energy lost during physical activity to produce a self-generating physical enhancement/protection system and develop a tailored, zero-power convergent system in fabric format based on this.</p>
---	--

College of Humanities

Department of Korean Language and Literature | Department of English Language and Literature | Department of European Languages and Cultures | Department of Asian Languages and Cultures | Department of Philosophy | Department of History

We are riding on the rapid waves of change of the age of the Fourth Industrial Revolution, AI, transhuman, post-human, post-truth, and convergence. The College of Humanities respects the basic virtues and values of humankind and studies the flexibility of humans and their unique traits in the new age.



College of Social Sciences

Department of Political Science and International Relations | Department of Public Service | Department of Psychology | Department of Library & Information Science | School of Media & Communication | Department of Sociology | Department of Urban Planning and Real Estate

A rapidly changing industrial age, labor, population structure, and lifestyle all demand new tasks and roles for the social sciences. To this end, we set out a vision to lead the future to cast away the new growth engine of the new age and offer opportunities for our students to use education to learn and further develop themselves.



College of Education

Department of Education | Department of Early Childhood Education | Department of English Education | Department of Physical Education

The College of Education was established in 1965 to develop teachers capable of researching to contribute to national development and also operates with the affiliated kindergarten, elementary school, middle school, and high school. Students will automatically receive the 2nd class teacher license upon graduation and may have several majors and minor studies.



College of Natural Sciences

Department of Physics | Department of Chemistry | Department of Biological Sciences | Department of Mathematics

Established in 1954, the College of Natural Sciences aims at producing the next generation of scientists and scholars who may bring prosperity to the nation and humankind as innovative leaders. It also strives to establish education and research infrastructure to nurture creative talents as well as future-oriented ones.



College of Biotechnology and Natural Resources

School of Bioresource and Bioscience | School of Food Science and Technology | Department of Systems Biotechnology

The College of Biotechnology and Natural Resources strives to develop excellent experts through practical education. The biotechnology field is expected to play a core role in the future society, and experts with skills in securing new and safe food, developing new biotechnology materials for disease and aging symptoms, and crafting environment-friendly approaches for healthier lives will be highly sought after.



College of Engineering

Department of Social Infrastructure System | School of Architecture and Building Science | School of Chemical Engineering and Material Science | School of Mechanical Engineering | School of Energy System Engineering | Department of Advanced Material Engineering

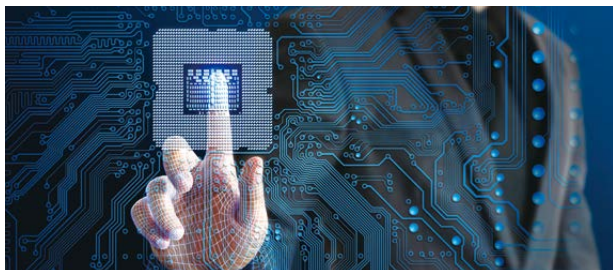
The College of Engineering has been striving to develop its students since its establishment in 1963. Professional faculty members train students to develop creative engineers for the future of society and converge education for the Fourth Industrial Revolution. With the introduction of the engineering certification and engineering education innovation center, students can be certified as expert engineers anywhere in the world.



College of ICT Engineering

School of Electrical and Electronics Engineering | School of Integrative Engineering | Department of Nex-Gen Semiconductor

The College of ICT Engineering cultivates next-generation ICT experts. Through new engineering education, the college produces self-directed, responsible, convergent, and practical engineers and offers various majors, such as Management, Art, Conviviality, Humanities(MACH) subjects, Flipped Classroom, experimental projects, etc.



College of Software

School of Software | Department of Artificial Intelligence

The undergraduate and postgraduate courses of Chung-Ang University's Department of Software were established in 1972 for the second and first time in Korea, respectively, honing many specialists. In 2017, the University was selected by the 2017 SW-Focused University Project and promoted as a software university, thereby solidifying its system to facilitate global-level research on computer software and hardware theories and technology and provide practical education that the industry requires.



College of Business & Economics

[School of Business Administration](#) | [School of Economics](#) | [Department of Applied Statistics](#) | [Department of Advertising and Public Relations](#) | [Department of International Logistics](#) | [School of Industrial Security](#) | [School of Global Knowledge-based Administration](#)

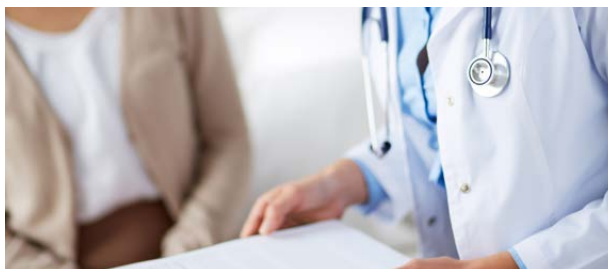
The College of Business & Economics strives to develop world-class talents with global minds and communication skills, prepared entrepreneurs equipped with theoretical and practical knowledge, and future leaders with considerate hearts and awareness of their social responsibilities, with excellent faculty members renowned for their outstanding prowess in research and education.



College of Medicine

[School of Medicine](#)

Established in 1971, Chung-Ang University's College of Medicine has continued to produce medical specialists with integrated knowledge and specializations who can lead the future medical industry for half a century. At the College of Medicine, we endeavor to hone outstanding medical personnel who can contribute to the good of humankind by equipping them with humane virtues, as well as medical knowledge and skills.



College of Pharmacy

[School of Pharmacy](#)

The College of Pharmacy develops creative talents that can advance and pioneer the field by creating a specialized course. It also strives to secure excellent faculty and research personnel to produce innovative experts in pharmaceuticals and biopharmacy, selected as national core growth industries.



Red Cross College of Nursing

[Department of Nursing](#)

The Red Cross College of Nursing operates undergraduate and postgraduate courses, as well as the Health Nursing Postgraduate School, under the slogan of becoming the "Global Hub for Nursing Education." To nurture globally competitive nursing specialists, the department focuses on enhancing students' English language skills, providing simulated nursing education for strengthened practical skills, and offering education to produce compassionate individuals.



College of Arts

School of Performing Arts and Media(Seoul and Anseong) | School of Fine Art | School of Design | School of Music | School of Korean Music | School of Global Arts

The College of Art established the best educational infrastructure to nurture students' creativity and their knowledge, capabilities, and characters through the faculty's open-minded and student-oriented education. Furthermore, we produce world-class artists and experts through the expansion of international exchange programs and global art leader development programs.



College of Art & Technology

School of Art & Technology

The College of Art & Technology develops entertainment industry experts and convergent engineers at the global level through its convergent curriculums, academy-industry-focused education, and advanced training in the creative industry's technologies. The students are also supported to enhance their competencies in solving technological and artistic issues using software to meet the rapid increase in the demand for technical directors in creative industries.



College of Sport Sciences

School of Sports Sciences

The College of Sport Sciences responds to the demand of the modern sports industry, creating remarkable progress annually, thanks to the advancement of science, information, public awareness, industrialization, and specialization. The college offers integrated studies in sports industry information, scientific theories, and principles in sports history, philosophy, physiology, dynamics, etc.



Da Vinci College of General Education

The Da Vinci College of General Education offers basic humanities studies and various curricula to develop Da Vinci-style talents that meet Chung-Ang University's educational goals and desired professionals. It also operates diverse basic elective subjects that meet the demands of the Fourth Industrial Revolution.



Da Vinci Virtuallege

Da Vinci Virtuallege utilizes Chung-Ang University's advanced education infrastructure, such as the online content production studio, advanced lecture rooms, extended reality(XR) studios, etc. It is the first of its kind among major universities in the Seoul region and is operated based on immersive media and the metaverse.

Start at Chung-Ang Succeed in the World

Chung-Ang University Graduate School takes a step forward as a global research-focused postgraduate school with its technology, tolerance, and talents and aims to achieve solid education, enhanced research capabilities, and globalization.



Graduate School

General Graduate School



Chung-Ang University General Graduate School was licensed for establishment in February 1953 and produced 32,397 quality talents(PhD: 6,769; MA: 25,628) as of February 2022, leading the development in the fields of economics, politics, culture, and social studies. Currently, the college offers 59 departments with 5 affiliations and 19 inter-departmental courses.

General Graduate School Courses by Department ▲ MA ● PhD

Humanities and Social Science	Natural Science	Engineering	Medicine
Department of Korean Language and Literature ▲●	Department of Animal Biotechnology ▲●	Department of Civil Engineering ▲●	Department of Medicine ▲●
Department of English Language and Literature ▲●	Department of Integrative Botany Biotechnology ▲●	School of Architecture and Building Science ▲●	Department of Medicine(Medical Science) ▲●
School of European Languages and Cultures ▲●	Department of Food Science and Technology ▲●	School of Chemical Engineering and Material Science ▲●	
Department of Japanese Language and Literature ▲●	Department of Food Engineering ▲●	Department of Mechanical Engineering ▲●	
Department of Psychology ▲●	Department of Physics ▲●	School of Electrical and Electronics Engineering ▲●	Inter-Departmental Collaboration
Department of Philosophy ▲●	Department of Chemistry ▲●	School of Computer Science and Engineering ▲●	Department of Child and Youth Studies ▲●
Department of History ▲●	Department of Mathematics ▲●	Department of Architectural Engineering ▲●	Department of German and European Studies ▲●
Department of Urban Planning and Real Estate ▲●	Department of Nursing ▲●	School of Integrative Engineering ▲●	Department of Mechanical System Engineering ▲
School of Social Welfare ▲●	Department of Pharmacy ▲●	Department of Energy System Engineering ▲●	Department of Northeastern Asia Studies ▲●
Department of Physical Education ▲●	Department of Biological Sciences ▲●	Department of Intelligent Energy Industry Convergence ▲●	Department of Literary and Artistic Contents ▲●
Department of Library and Information Science ▲●	Department of Systems Biotechnology ▲●	Department of Artificial Intelligence ▲●	Department of Security Convergence ▲●
Department of Education ▲●	Department of Global Innovative New Pharmacy ▲●		Department of Human Resources Development ●
Department of Early Childhood Education ▲●	Department of Food Safety Regulation ▲●		Department of Cultural Studies ▲●
Department of English Education ▲●		Art	Department of Pharmaceutical Industry ▲
Department of Law ▲●		School of Music ▲	Department of Culture-Art Business Administration ▲●
Department of Political Science and International Relations ▲●		School of Korean Music ▲	Department of Cultural Studies ●
Department of Administration ▲●		Department of Musical Theory ●	Department of Entrepreneurship ▲●
School of Media & Communication ▲●		Department of Formative Art ▲●	Department of Art Science ●
Department of Sociology ▲●		School of Design ▲●	Department of Sport Technology and Information ▲●
Advertising & Public Relations ▲●		Department of Fashion	Department of New Media Art ▲
Department of Business Administration ▲●		School of Performing Arts and Media ▲●	Department of National Assembly ▲●
Department of Accounting ▲●		Department of Dance(Practical) ▲●	Department of Smart City ▲●
School of Economics ▲●			Department of Advanced Material Parts ▲●
Department of Statistics ▲●			
Department of International Logistics ▲●			
Department of Sport Science ▲●			



Professional School

Professional Schools



Chung-Ang University Professional Schools produce highly advanced experts who can apply academic studies in their specializations, developing global-level experts across all its faculties.

[Graduate School of International Studies](#)
[| Graduate School of Advanced Imaging Sciences, Multimedia and Film](#) | [Chung-Ang Business School](#) | [Law School](#)



Special Graduate Programs

Special Graduate Programs



The Special Graduate Programs offer educational courses where those with careers or the general public may advance their studies and enhance their capabilities. With these programs, students can combine Chung-Ang education with their practical experiences to become versatile experts.

[Graduate School of Social Development](#)
[Graduate School of Education](#)
[Graduate School of Mass Communication](#)
[Graduate School of Construction Engineering](#)
[Graduate School of Public Administration](#)
[Graduate School of Industrial and Entrepreneurial Management](#)
[Graduate School of Arts](#)
[Graduate School of Korean Music](#)
[Graduate School of Global Human Resource Development](#)
[Graduate School of Nursing and Health Professions](#)
[Graduate School of Psychological Service](#)
[Graduate School of Security](#)



CAU Education

CAU Education

CAU, Developing Da Vinci-style Talents

Da Vinci-type talent for Problem solving



Advanced Education System Leading Future Education in the Post-Pandemic World

Chung-Ang University offers a remote, mobile, and communicable education system to prepare its students for the post-pandemic era. With this, students at Chung-Ang University grow into future leaders with versatile skills in both the real and virtual world.

Establishment of Da Vinci Virtuallege

Da Vinci Virtuallege is a novel education system created by Chung-Ang University and operated online based on an edu tech(e.g., immersive media, etc.)-applied curriculum. Students in the College experience high-quality interactions and educational influence through VR and immersive media-based classes. Chung-Ang University operates Da Vinci Virtuallege based on its know-how in developing a curriculum that uses rich data from the operation of major convergence subjects in games and interactive media established in 2015.

Advanced Edu Tech Environment

Spaces Specializing in Immersive Content: **Hyper-Immersive XR Studio**

The "Hyper-Immersive XR Studio" allows students to produce immersive content-based, high-quality material that encompasses AR, VR, and mixed reality(MR).



Free Information-Sharing and Discussion Space: **Da Vinci Classroom**

This cluster of 23 classrooms provides discussion classes that go beyond live lectures, as students can share data and discuss on various mobile devices.



CAU
Edu Tech

Korea's Best Photoshoot Studio: **MOOC Studio**

Chung-Ang University established the CAU Massive Open Online Course(MOOC) Studio with Sony Korea. This studio records and provides lecture contents in high-quality files.



SW SHIFT with CAU: **Da Vinci Software Education Institute**

Da Vinci Software(SW) Education Institute establishes advanced infrastructure to facilitate open undergraduate-postgraduate cooperation, basic SW education tailored for students in other fields, and the development of creative convergence specialists through SW convergence major education.



Communicative Talents with Convergence-driven Thinking and Flexibility

Da Vinci Learning

Da Vinci Learning is a lecture system that encourages student participation. In this system, students study videos prepared by the lecturer in advance and attend participation-based classes where they can discuss and solve problems. After the class, students can further hone their knowledge by joining activities where they can practice the advanced application of what they have learned. In “Da Vinci Classroom,” students and lecturers may actively share data through live online lectures and recorded lecture videos.

Multi-Major System

Chung-Ang University offers convergence and integrated education to provide continuous growth for students. Through this, students will graduate with knowledge and skills that go beyond the studies they majored in.

Convergence Major

The multi-major education course combines more than two departments (Financial AI, Cultural Content, Startup Studies, Game & Interactive Media, Software & Humanities, Cyber Security, Technology-Art, Software Venture, Cultural Diversity, K-Wave Culture, etc.).

Inter-Departmental Major

This major studies system links more than two academic departments to meet students' needs for new fields of study and strengthen inter-departmental education.



Self-Designed Major

This system allows students to design their own major study course and take it after acquiring faculty approval.

Double Major

The system allows multiple majors other than the bachelor course's major and main department.

Minor Programs

This system allows students to take additional majors other than their major studies.

Flexible Semester

The Flexible Semester System allows students to shorten the typical 16-week semester into 8 intensive weeks so that both students and faculty members may participate in overseas education and research activities with the extra time.

Creative Problem-Solvers, Da Vinci-Type Talents



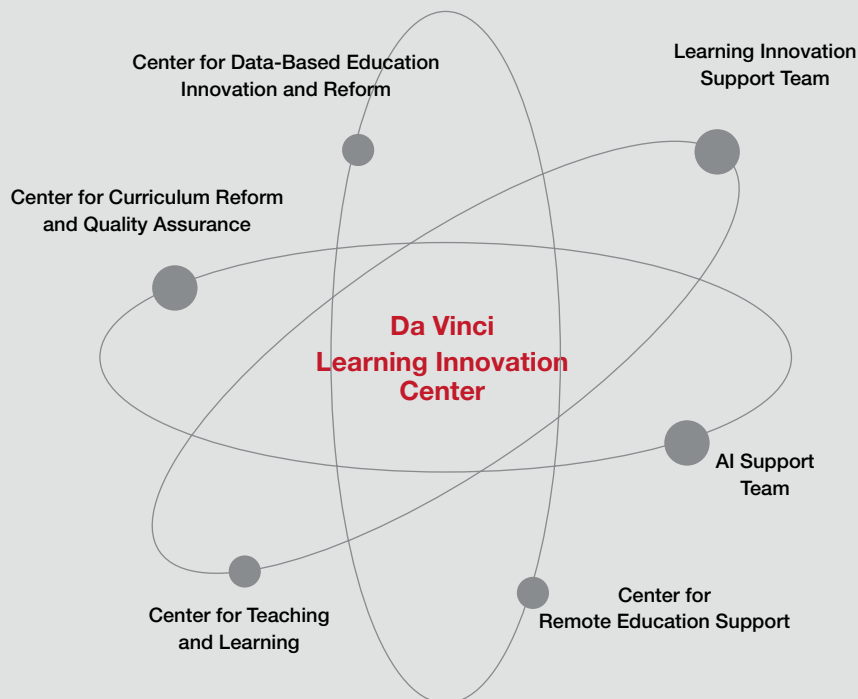
Da Vinci Learning Innovation Center

The Da Vinci Learning Innovation Center carries out teaching-learning development, reorganization of education courses, and education performance management to achieve “education that supports the growth of students,” the goal of CAU2030. The institute aims to achieve student growth rather than student success through its innovative programs.

Da Vinci Center Human Resource Development Center

Da Vinci Human Resource Development Center offers career search opportunities to students and plans and operates various programs for career development and job-seeking skills.

- Career curriculum subjects
- Career consulting / career special lectures / career boot camp
- Career study / mentoring
- Career capability development course
- Campus recruitments
- Employment recommendation
- Recruitment information and posting of employment information
- Employment statistics



Entrepreneurship- nurturing Startup Support

Da Vinci Startup Support Group

Chung-Ang University established Creative Line, a one-stop platform for business startups, with Da Vinci Startup Support Group as its control tower. With it, the university offers close-up startup support with the Creative Studio for ideation, Creative Factory for prototype production, Creative Complex for pre-startup preparations, and Creative Business Center for the actual startup.

LINC 3.0 Project

Chung-Ang University has finally been selected for the “Leaders in INdustry-university Cooperation 3.0,” announced by the Ministry of Education in 2022, followed by phases 1.0 and 2.0. The university was selected in the demand-tailored growth category and will receive around KRW 4 billion per year until 2027—totaling KRW 24 billion—from the national treasury to develop talents in new industries and technologies. We will also enhance the sharing and cooperative system to strengthen the academy–industry innovative ecosystem.

CAU Startup Support Programs

Capstone Design

Students can plan, design, and produce products industries(or society) require based on the humanities, art, natural science, and medical fields, as well as engineering.

Work Placement and Academy–Industry Internship

The university offers career enhancement programs where students can apply their knowledge in local/international enterprises and institutions and learn firsthand work experiences and skills.

Academy–Industry Education

We expand academy–industry subjects, education program development, class selling, and work placements to produce tailored talents and enhance the link to industries.



Chung-Ang's Youth The Future of International Seoul

Many international cities are formed with a university at their center, followed by jobs, residential areas, and cultural venues. The Campus Town Project is a large-scale project supported by Seoul Metropolitan City jointly with other Seoul universities to vitalize jobs for the youth and regenerate the university towns.



Blue Dragon of Heukseok

Chung-Ang Convergence Startup Campus Town

Leading Local Cooperatives, Information Technology (IT)-based Leisure, and Sports/Art Startup Businesses

Chung-Ang University ranked first in the 2017 Campus Town Project competition and showed active participation as the second term University President in 2019. Through this project, which funds up to KRW 10 billion, Chung-Ang University creates a campus town with local and cultural infrastructure and supports youth startups until 2022.



Goal



Sports Groups Dedicated to the Development of National and Global Sports

Chung-Ang University established basketball, baseball, and soccer teams from 1952 to 1954, significantly contributing to national sports development. In 2014, we continued to develop excellent players after the teams were raised to form a sports group, dominating the Korean sports scene and

contributing to international sports development.

Chung-Ang University's Sports Group unites players and students alike, raising the university's honor. We strive to make students take pride in their university through sports.



Sports Team



Student Support and Activities



Scholarships

Scholarships for Freshmen

We offer the Scholarship for Excellent Entry w Science Talent Scholarship, Admission Honor Scholarship, etc.

*Special Chemistry Scholarship Scholarship program for those who entered special chemistry departments(Bachelor of Public Talent, Bachelor of Business Administration [Global Finance], Bachelor of Industrial Security [Humanities/Science], Bachelor of Integrative Engineering, Bachelor of Software, Department of AI, Department of

Advanced Material Engineering, College of Art & Technology [Bachelor of Art & Technology])

scholarship's income range so that our students may focus on their studies.

Scholarships for Existing Students

We support existing students depending on specific categories, such as the Dean's list, volunteers, national exams, foreigners, veterans, etc.

We provide full or partial scholarships by income group, with the marginalized household scholarship assessed according to the national

Scholarships by Scholarship Foundations

Over 40 scholarship foundations pool funds so that students may focus on their studies.

Student Cultural Activities

LUCAUS Festival

Blue Dragon Song Festival, Cheering Festival, Chung-Ang People Event (May in Seoul, October in Anseong)

Student Council Festival (Spring and Autumn)

Special lectures, performances, cultural events, etc.

April 19 Revolution Commemoration Ceremony

The April 19 Revolution Commemoration Ceremony Invitation of promotional foundation and alumni association(April)

Springtime Cultural Event

Anseong campus springtime cultural event(April, Anseong)

Social Volunteer Groups

On-Campus Volunteers

- Blue Dragon Social Volunteer Group(biannual)
- Countryside Volunteer Activities(spring, summer, autumn)
- Blood Donation(frequently)
- Day of Volunteer(four times a year)
- Love Sharing Volunteer(Children's Day and Christmas)
- Anseong Campus Volunteer Trip(summer break)

Institution-Hosted Volunteers

- Volunteer activities with Chung-Ang University Hospital
- National Foundation of Korea talent volunteer camp

Overseas Volunteer Groups

- Educational volunteers and cultural exchange for overseas students learning Korean in Indonesia, Vietnam, etc.(summer/winter break)
- Educational, effort, and talent volunteers with Doosan Vina(winter break)

Clubs / Cheer Groups / Reserve Officers' Training Corps(ROTC)

Establishment of Student Associations

Chung-Ang club promotion activities and open clubroom event(March)

Uihyeol Festival

Cultural and art club performances(September)

National University Basketball / Baseball / Soccer Competitions

Free bus transportation and tickets for those in the cheering squad for national-level final rounds

ROTC Support

Commission celebration, Blue Dragon Martial Art Festival, and local and international military culture expeditions

Broadened and Deepened Knowledge Through Global Exchange

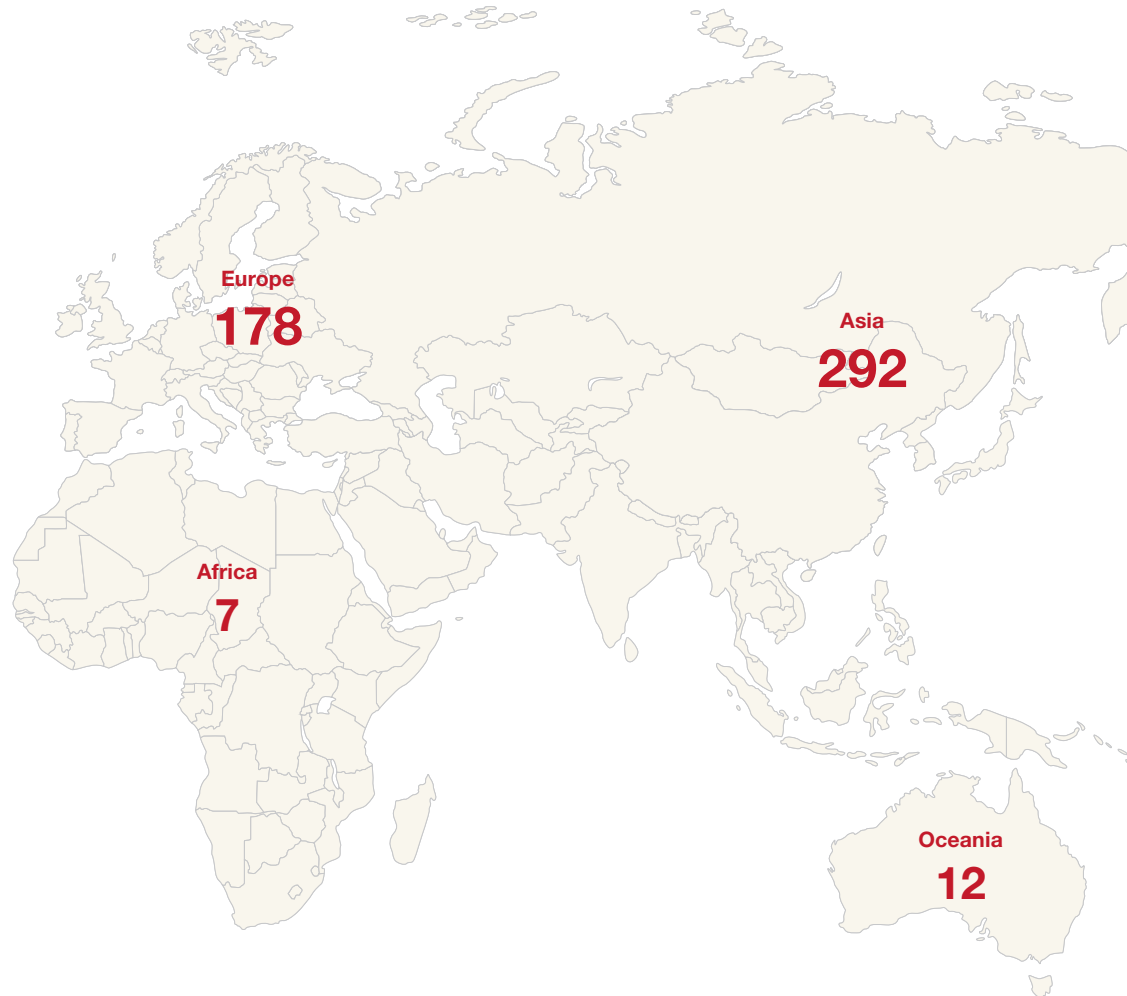
“From the Center of Korea to the Center of the World”
The world is the company and stage that Chung-Ang University seeks to accompany.

Exchange and Visiting Student Program

Exchange Student Program is for students in overseas sister universities selected by their university or department. The chosen students will be invited to study at another university after paying their own university's tuition fee for a semester or a year. The Visiting Student Program allows students to pay 20% of their university's tuition fee and the sister university's regular tuition fee for a semester's or a year's study.

International Summer/ Winter Semester Program

The International Summer/Winter Semester Program offers students with various English-based classes with visiting international students for summer/winter semesters at Chung-Ang University. You can make international friends without going overseas and gain credit points.



International Student Ambassador “CAU Global Ambassador(GLAM)”

As an international student ambassador of Chung-Ang University’s International Exchange Team, the student introduces Chung-Ang University to international students and assists them during their stay in Korea. The ambassador also provides assistance in the daily life of international exchange students and plans and operates events such as cultural experiences.

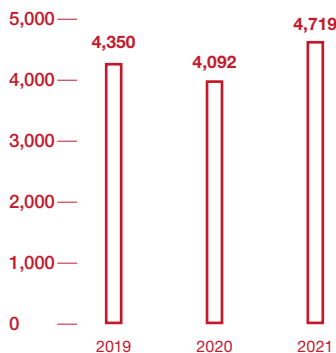


Free Communication at Global Community Center & Global Lounge

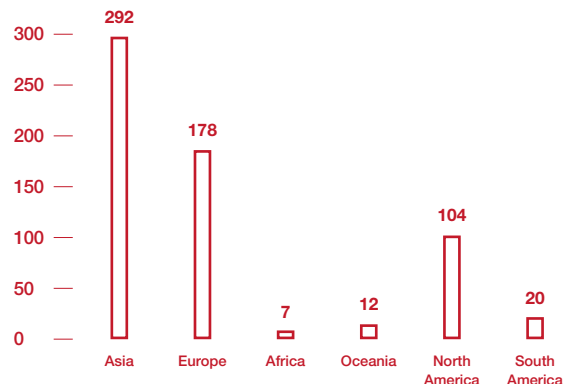
Seoul Campus | The Global Community Center is an international lounge located in Suite 322, Building 310, where international students can freely mingle. In particular, you can meet international exchange students from English and French-speaking regions. It also offers various international exchange programs, such as the Global Fair, Language Exchange, Global Week, Movie Day, etc.

Anseong Campus | The Global Lounge is located on the ground floor of the Faculty Research Building and is dedicated to Korean, international, and exchange students.

No. of International Students
(Including postgraduate students and language center students)



Status of Current Agreements by Continent
(Unit: Agreement)



Chung-Ang University Hospital

A Safe Hospital with Consideration and Sympathy

Opened in 1968, Chung-Ang University Hospital acquired medical institution assessment marks three consecutive times from the Ministry of Health and Welfare, with its continuous development of medical services for enhanced patient safety and medical service quality. The hospital has also been designated as a higher integrated medical center that practices high-class medical services for severe and complicated diseases.

INTRODUCTION

- Size: 775 beds(489 in the Central Wing, 286 in Dajeong Wing)
- Location: 102, Heukseok-ro, Dongjak-gu, Seoul
- Tel: +82-1800-1114
- Website: <http://ch.cauhs.or.kr>



Leading Korea's Next-gen Health Care: Chung-Ang University Gwangmyeong Hospital

Chung-Ang University Gwangmyeong Hospital opened as the largest integrated medical center in the southwestern region, boasting a total floor area of 97,000m² on the 10,400m² land, with 8 basement floors and 14 floors aboveground, as well as around 700 beds. It is located near KTX Gwangmyeong Station for easy access and offers 30 faculties, along with 6 severe disease center clusters, including the Cancer Center, Cardio-Cerebrovascular Center, Spinal Center, Articular Center, Respiratory-Allergy Center, Gastrointestinal Center, etc.

INTRODUCTION

- Size: 700 beds
- Location: 110, Deokan-ro, Gwangmyeong-si, Gyeonggi-do
- Tel: +82-1811-7800
- Website: <http://gh.cauhs.or.kr>





Affiliated Schools Developing Global Citizens with Chung-Ang University

Chung-Ang University offers affiliated kindergarten, elementary school, middle school, and high school to nurture talents with the spirit of Chung-Ang.

• Affiliated Kindergarten



Established as an affiliated kindergarten to Jeongdong First Methodist Church in 1916, this kindergarten is the first of its sort for Koreans by Koreans such as Park Hee-do, an independent activist. Its name was changed to Chung-Ang University Kindergarten in 1965, and it has been leading Korea's early childhood education since. At Chung-Ang Kindergarten, we respect each child's world and provide autonomous activities so that they can realize their full potential and characters to become future-oriented and creative.

• Affiliated Elementary School



Opened on March 8, 1965, Chung-Ang Elementary School was the first to introduce the subject homeroom teacher system in Korea. It practices cooperative class development, publishes books such as Practical Method of Cooperative Arithmetic Class, etc., and offers continuous educational activities, such as friendship-sibling activities for character building, preemptive research of subjective assessment methods for assessment method improvement, development of class models, etc. Thanks to these efforts, many of the practices developed by the school have been adopted by other public elementary schools, thereby contributing to the advancement of elementary school education.

• Affiliated Middle School



Established in 1934, Chung-Ang Middle School became a coed school upon merging Chung-Ang Girls Middle School in 1997. Under the educational motto of "Respect ethics and morality, be kind to others, and become lamps that light the dark," the school has been nurturing students to reach their full potential and grow into creative 21st-century citizens.

• Affiliated High School



After having received the license for its establishment in 1934 as Joseon Career School, the school rebranded to its current name, Chung-Ang University High School in 1965. In 1997, the school built a new campus in Dogok-dong, Gangnam-gu, Seoul, and integrated the boys' and girls' high schools in Heukseok-dong into a coed school. Under the motto of "respect ethics and morality to become lamps that light the dark," the school strives to nurture the youth who could bring great contributions to the nation and local communities.

中央圖書館

CENTRAL LIBRARY



中央圖書館

CAU
경향대학교

CAU
경향대학교

CAU
경향대학교

Chung-Ang University seeks new opportunities for growth amid the post-COVID-19 pandemic age and the Fourth Industrial Revolution.

We believe that rapid changes and increased adversities provide more opportunities for problem-solving and enhanced competitiveness.

At Chung-Ang University, we fulfill our social responsibilities through practical ESG with the innovation of an AI campus and explosive potential as a research-focused university.

Chung-Ang University solves global issues together and creates a better world of justice and truth.

Creating a Better World of Justice and Truth



