



江南大学国际教育学院
SCHOOL OF INTERNATIONAL EDUCATION,JIANGNAN UNIVERSITY

International Postgraduates (Self-funded)2023

江南大学国际教育学院
二〇二三年

1. Enrollment Pathway —

Application-Review-Test. After a review of application materials, a written or oral test is required.

2. Program Catalogue —

Please refer to the attached 2023 *Jiangnan University Program Catalogue for International Postgraduates*.

3. Qualifications —

3.1 General Requirement

- **Age:** Master applicants, 40 years and below; PhD applicants, 45 years and below (Any exception, if any, will be arbitrated case wise).
- **Health:** Good and above.
- **Citizenship:** A citizen of a country other than the People's Republic of China.
- **Others:** Well-mannered and of integrity.



3.2 Language Requirement

- An applicant for a Chinese-taught program is required to hold a valid Level-4 or above Chinese Proficiency Test (hereafter referred to as HSK) certificate. An applicant for a Literature or History program is required to hold an HSK-5 or above certificate.



- An applicant for an English-taught program is required to hold a valid English proficiency test certificate, such as IELTS 6.0 or above, TOEFL 80 or above, CEFR B2 or other certificates which can prove his/her English proficiency sufficient to meet the demand of studying and living in China. An applicant who graduates from an English-taught school is exempted from the above certificates.



4. Program Duration —

Master Students: 3 Years; PhD Students: 4 Years. For details, please refer to the attached 2023 *Jiangnan University Program Catalogue for International Postgraduates*.



5. Time Schedule —

- **Application Time:** November. 1, 2022-June 30, 2023
- **Registration Time:** Around the end of August to the beginning of September, which might vary with your offer or email notification from the university.

6. Application and Admission Procedures —

- Step One** The applicant applies on-line at <https://jiangnan.17gz.org/>.
- Step Two** The applicant pays the application fee(non-refundable).
- Step Three** The university screens the applicant's qualification.
- Step Four** The applicant takes a written or oral test.
- Step Five** The university issues a conditional offer.
- Step Six** The applicant pays the tuition deposit of CNY 3000 within one month after receiving the conditional offer. Otherwise, the applicant is considered to decline his/her conditional offer.
- Step Seven** The university issues a full offer.

7. Application Materials —

All the following materials are required to be clear and complete.

- ✓ A Color Scanned Copy of Passport (Photo Page, Visa Page if applicable)
- ✓ A Color ID Photo Valid within 6 Months (JPG. JPEG. No Bigger than 1M)
- ✓ A Color Scanned Copy of the Bachelor Degree\Master Degree Certificate or Provisional Certificate
- ✓ A Color Scanned Copy of the Undergraduate \Master Degree Transcript
- ✓ A Color Scanned Copy of Chinese/English Proficiency Test Certificate
- ✓ FThe Provisional Acceptance Letter of a Supervisor at Jiangnan University
(<http://studyabroad.jiangnan.edu.cn/info/1883/2994.htm>)
- ✓ Research Proposal
- ✓ Two Recommendation Letters
- ✓ Financial Support Certification
(<http://studyabroad.jiangnan.edu.cn/info/1883/3116.htm>)
- ✓ Official Bank Statement (Transaction record details within 6 months)
- ✓ Non-criminal Record
- ✓ Physical Examination Record (Within 6 Months)
(<http://studyabroad.jiangnan.edu.cn/info/1883/2990.htm>)

Note A:

- Non-Chinese or Non-English documents are required for attachment of Chinese or English translation either notarized or issued by the original organization.

Note B:

- All the above materials are required to be color scanned and submitted. They are to be verified upon registration.

8. Fees (CNY/RMB) —

Discipline Type	Application Fee	Tuition (per year)	Accommodation (per year)	Tuition Deposit
Liberal Arts/Master	400	20000	3000	3000
Liberal Arts/PhD	400	25000	3000	3000
Science & Engineering/Master	400	20000	3000	3000
Science & Engineering/PhD	400	25000	3000	3000

For details, please refer to the attached *2022 Jiangnan University Program Catalogue for International Postgraduates*.



9. Account Information —

Jiangnan University Bank Account 1 (Foreign Currency)

- **Payee:** Jiangnan University
- **Receiving Bank:** Wuxi Branch of Bank of China(BOC)
- **Address:** No. 258,Zhongshan Road, Wuxi, Jiangsu, P. R. China, 214002
- **Bank Account:** 474158228044
- **Swift Code:** BKCHCNBJ95C

Jiangnan University Bank Account 2 (RMB)

- **Payee:** Jiangnan University
- **Receiving Bank:** Jiangnan University Branch of Industrial and Commercial Bank of China(ICBC)
- **Address:** No.1800, Lihu Avenue, Wuxi, Jiangsu, P. R. China, 214122
- **Account:** 1103030709100000136

10. Contact Information —

School of International Education

- ✓ No.1800, Lihu Avenue, Wuxi, Jiangsu, P. R. China
- ✓ Postal Code: 214122
- ✓ Tel: 0086-510-85329235, 85919552
- ✓ Email: admissions@jiangnan.edu.cn
- ✓ Website: <http://studyabroad.jiangnan.edu.cn/English/Home.htm>

Appendix —

2023 Jiangnan University Program Catalogue for International Postgraduates

— 1. English-taught Programs

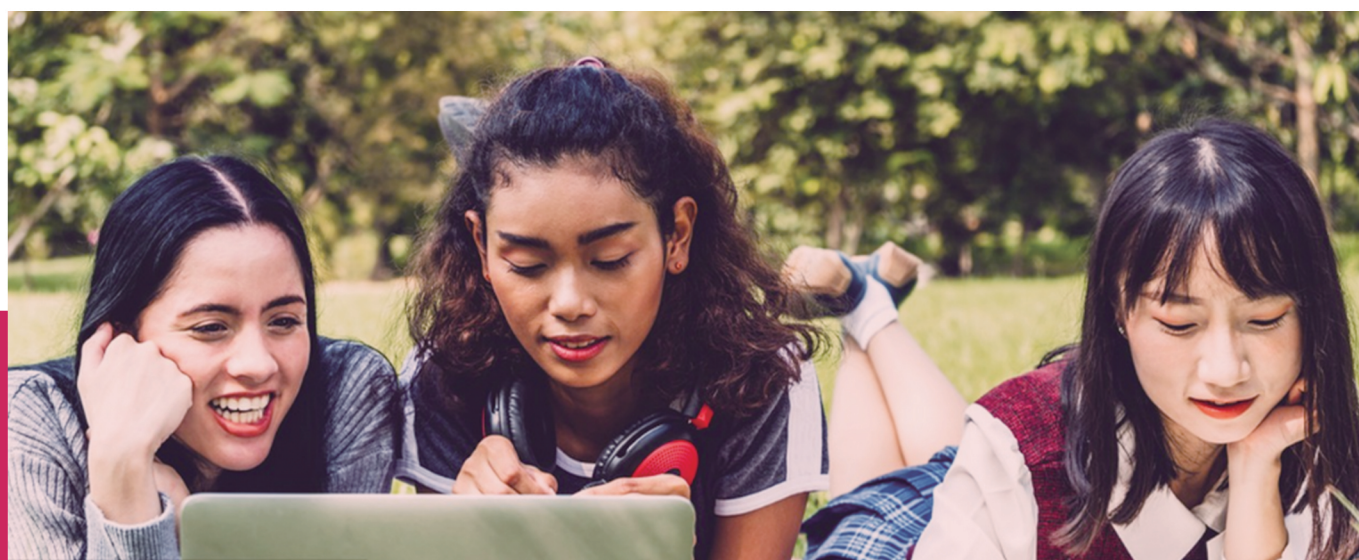
— Master Programs

School	Major	Duration	Tuition (CNY/Year)
School of Food Science & Technology http://en.foodsci.jiangnan.edu.cn/	Food Science & Engineering	3	20000
School of Biotechnology http://en.biotech.jiangnan.edu.cn/	Fermentation Engineering	3	20000
	Microbiology	3	20000
	Biochemistry & Molecular Biology	3	20000
	Sugar Refining Engineering	3	20000
School of Textile Science & Engineering http://ctc.jiangnan.edu.cn/ome/Home.htm	Textile Engineering	3	20000
School of Design http://sodcn.jiangnan.edu.cn/ENGLISH/About	Design	3	20000
School of Pharmacy http://sps.jiangnan.edu.cn/English.htm	Pharmacy	3	20000



— PhD Programs

School	Major	Duration	Tuition (CNY/Year)
School of Food Science & Technology http://en.foodsci.jiangnan.edu.cn/	Food Science & Engineering	4	25000
School of Biotechnology http://en.biotech.jiangnan.edu.cn/	Fermentation Engineering	4	25000
	Sugar Refining Engineering	4	25000
School of Textile Science & Engineering http://ctc.jiangnan.edu.cn/Home/Home.htm	Textile Engineering	4	25000
School of Chemical & Material Engineering http://chem.jiangnan.edu.cn/Home/Home.htm	Chemistry Technology & Engineering	4	25000
School of Design http://sodcn.jiangnan.edu.cn/ENGLISH/About	Design	4	25000
School of Pharmacy http://sps.jiangnan.edu.cn/English.htm	Pharmaceutical Engineering & Technology	4	25000



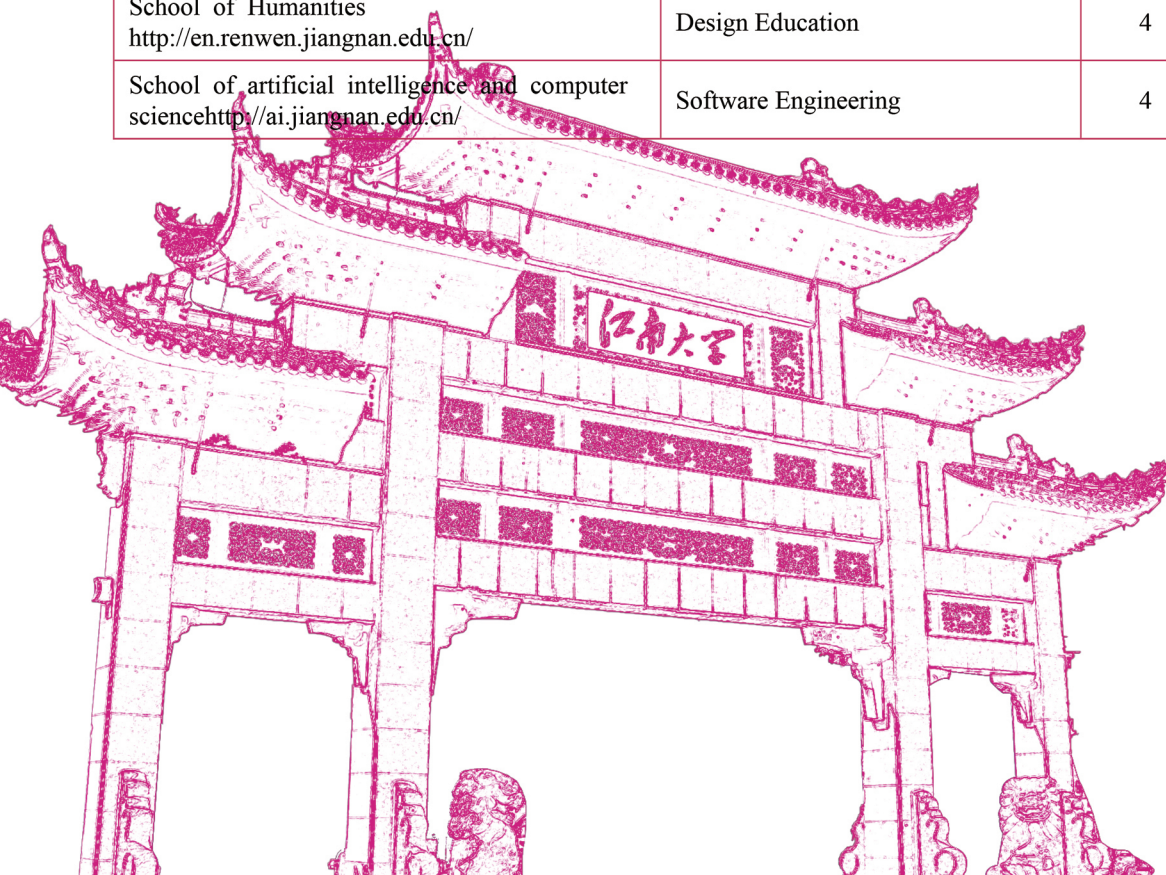
— 2. Chinese-taught Programs

— Master Programs

School	Major	Duration	Tuition (CNY/Year)
School of Food Science & Technology http://en.foodsci.jiangnan.edu.cn/	Food Science & Engineering	3	20000
School of Biotechnology http://en.biotech.jiangnan.edu.cn/	Fermentation Engineering	3	20000
	Microbiology	3	20000
	Biochemistry & Molecular Biology	3	20000
	Sugar Refining Engineering	3	20000
School of Textile Science & Engineering http://ctc.jiangnan.edu.cn/ome/Home.htm	Textile Engineering	3	20000
	Textile Chemistry & Dyeing & Finishing Engineering	3	20000
	Pulp Making & Paper Making Engineering	3	20000
	Garment Design & Engineering	3	20000
School of Chemical & Material Engineering http://chem.jiangnan.edu.cn/Home/Home.htm	Materials Science & Engineering	3	20000
	Chemistry Engineering & Technology	3	20000
School of Internet of Things Engineering http://iot.jiangnan.edu.cn/English/Home.htm	Control Science & Engineering	3	20000
	Electronics Science & Technology	3	20000
	Electrical Engineering	3	20000
School of Environment & Civil Engineering http://building.jiangnan.edu.cn/Home/Home.htm	Environment Science & Engineering	3	20000
School of Business http://busi.jiangnan.edu.cn/english/	Business Administration	3	20000
	Applied Economics	3	20000
	Management Science & Engineering	3	20000
School of Science science.jiangnan.edu.cn/	Optical Engineering	3	20000
	Mathematics	3	20000
School of Mechanical Engineering http://sme.jiangnan.edu.cn/English1.htm	Mechanical Engineering	3	20000
	Packaging Engineering	3	20000
School of Design http://sodcn.jiangnan.edu.cn/ENGLISH/About	Design	3	20000
	Fine Arts	3	20000
School of Pharmacy http://sps.jiangnan.edu.cn/English.htm	Pharmacy	3	20000
School of Humanities http://en.renwen.jiangnan.edu.cn/	Education	3	20000
	Chinese Language & Literature	3	20000
	Education Technology	3	20000
	Music and Dance	3	20000
School of artificial intelligence and computer science http://ai.jiangnan.edu.cn/	Computer Science & Technology	3	20000
	Software Engineering	3	20000

— 2. Chinese-taught Programs

School	Major	Duration	Tuition (CNY/Year)
School of Food Science & Technology http://en.foodsci.jiangnan.edu.cn/	Food Science & Engineering	4	25000
School of Biotechnology http://en.biotech.jiangnan.edu.cn/	Fermentation Engineering	4	25000
	Sugar Refining Engineering	4	25000
School of Textile Science & Engineering http://ctc.jiangnan.edu.cn/ome/Home.htm	Textile Science & Engineering	4	25000
School of Chemical & Material Engineering http://chem.jiangnan.edu.cn/Home/Home.htm	Chemistry Technology & Engineering	4	25000
	Materials Chemistry	4	25000
School of Internet of Things Engineering http://iot.jiangnan.edu.cn/English/Home.htm	Control Science & Engineering	4	25000
	Internet of Things Technology & Engineering	4	25000
School of Environment & Civil Engineering http://building.jiangnan.edu.cn/Home/Home.htm	Environment Science & Engineering	4	25000
School of Mechanical Engineering http://sme.jiangnan.edu.cn/English1.htm	Mechanical Engineering	4	25000
School of Design http://sodcn.jiangnan.edu.cn/ENGLISH/About	Design	4	25000
School of Pharmacy http://sps.jiangnan.edu.cn/English.htm	Pharmaceutical Engineering & Technology	4	25000
School of Humanities http://en.renwen.jiangnan.edu.cn/	Design Education	4	25000
School of artificial intelligence and computer science http://ai.jiangnan.edu.cn/	Software Engineering	4	25000



International Undergraduates



